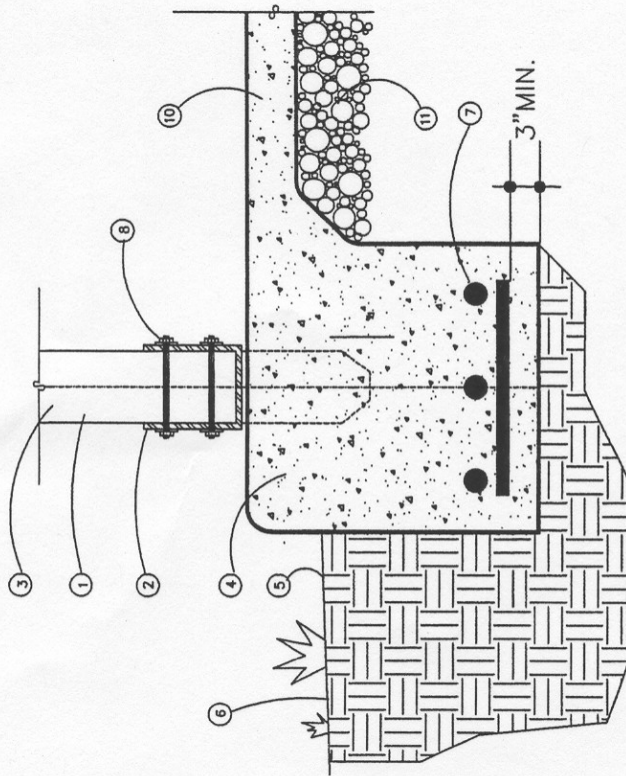
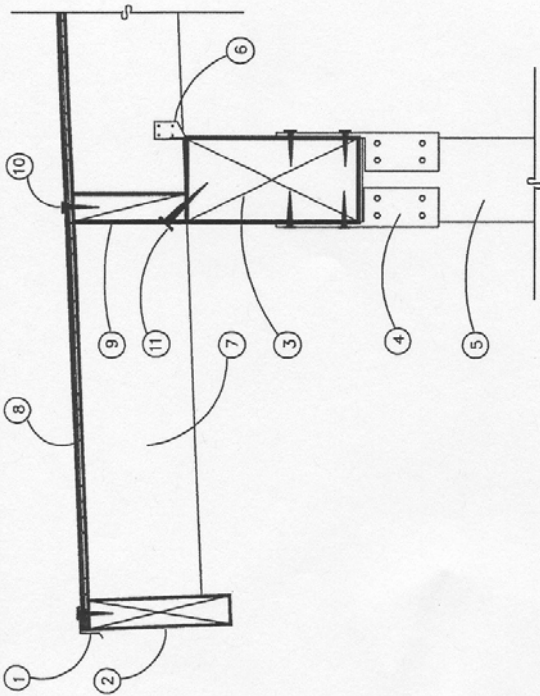


PATIO KEY SECTION



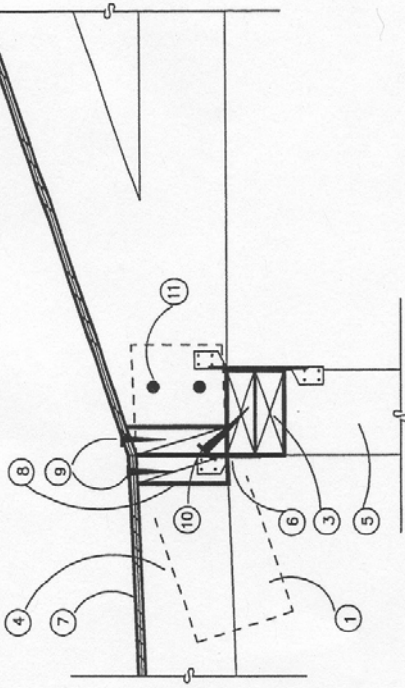
- ① POST, SEE PLAN FOR SIZE
- ② ADJUSTIBLE BASE, MIN, 1" ABOVE CONCRETE
- ③ CENTERLINE OF POST AND FOOTING
- ④ MINIMUM 24"X24" CONCRETE FOOTING MIN. 18" BELOW UNDISTURBED SOIL
- ⑤ FINISH GRADE
- ⑥ SLOPE MIN. 5% FOR 10' AWAY FROM STRUCTURE
- ⑦ (#3) #4 EA-WAY REINFORCING, SEE PLAN
- ⑧ THURBOLTS - SEE PLAN FOR SIZE.
- ⑩ 4" CONCRETE SLAB
- ⑪ 4" ABC FILL WITH 5 YEAR TERMITTE TREAT

1 POST FOOTING AT PATIO



- ① GALVANIZED IRON DRIP EDGE
- ② 2 x FASCIA
- ③ PATIO BEAM, SEE PLAN FOR SIZE
- ④ APPROVED COLUMN CAP WITH UPLIFT RATING
- ⑤ POST, SEE PLAN FOR SIZE
- ⑥ HURRICANE TIE @ EA. ROOF RAFTER
- ⑦ PATIO RAFTER, SEE PLAN FOR SIZE & SPACING
- ⑧ 1/2" CDX PLYWOOD SHEATHING
- ⑨ 2 x SOLID BLOCKING
- ⑩ EDGE NAILING 8d @ 6" O/C MIN.
- ⑪ 3-16d/BAY TOENAILING TO TOP PLATE

② PATIO BEAM CONNECTION



- ① CUT OVERHANG OFF, FLUSH W/ TOP PLATE
- ② DOUBLE TOP PLATE
- ③ NEW JOISTS BEARING ON TOP PLATE, SEE PLAN FOR SIZE
- ④ EXISTING STUD WALL
- ⑤ HURRICANE TIE @ EA. ROOF RAFTER OR FACE NAIL TO EXIST TRUSS
- ⑥ 1/2" CDX PLYWOOD SHEATHING
- ⑦ 2 x SOLID BLOCKING
- ⑧ EDGE NAILING 8d @ 6" O/C MIN.
- ⑩ 3-16d/BAY TOENAILING TO TOP PLATE
- ⑪ MINIMUM TWO 10d NAIL

③ PATIO ROOF TO EXISTING HOUSE