



Monthly Financial Update

As of November 30, 2010

City Council

December 13, 2010

Prepared by: Finance and Accounting Division



November 2010 General Fund Results

(in millions)

	Revised Budget	Actual	Favorable/ (Unfavorable)	% Change
Sources	\$23.6	\$23.7	\$0.1	0%
Uses	19.3	18.5	0.8	4%
Change in Fund Balance	\$4.3	\$5.2	\$0.9	



FYTD General Fund Results

as of 11/30/10 (in millions)

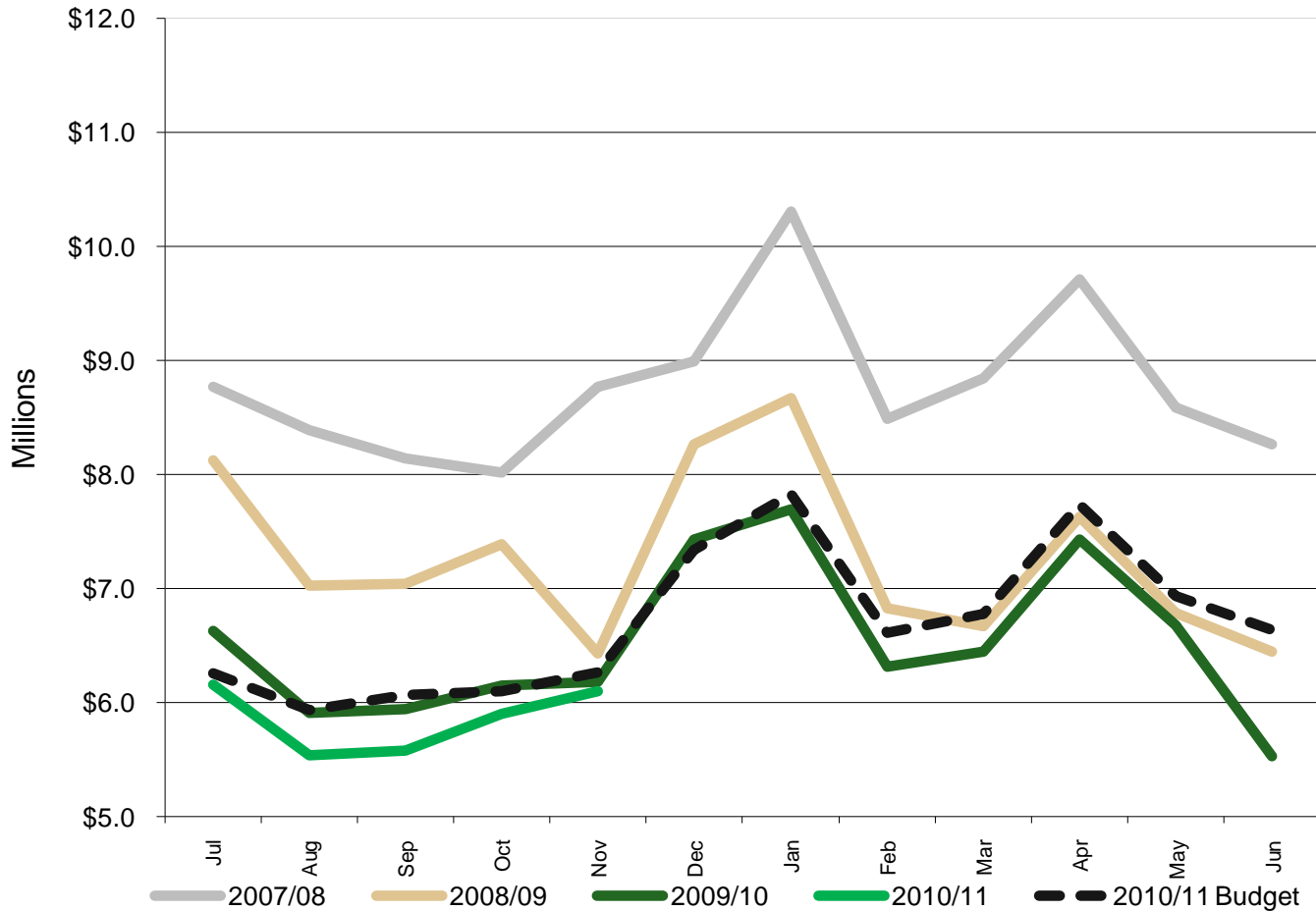
	Revised Budget	Actual	Favorable/ (Unfavorable)	% Change
Sources	\$96.3	\$ 96.2	(\$0.1)	0%
Uses	96.9	91.6	5.3	5%
Change in Fund Balance	(\$0.6)	\$4.6	\$5.2	



City of Scottsdale

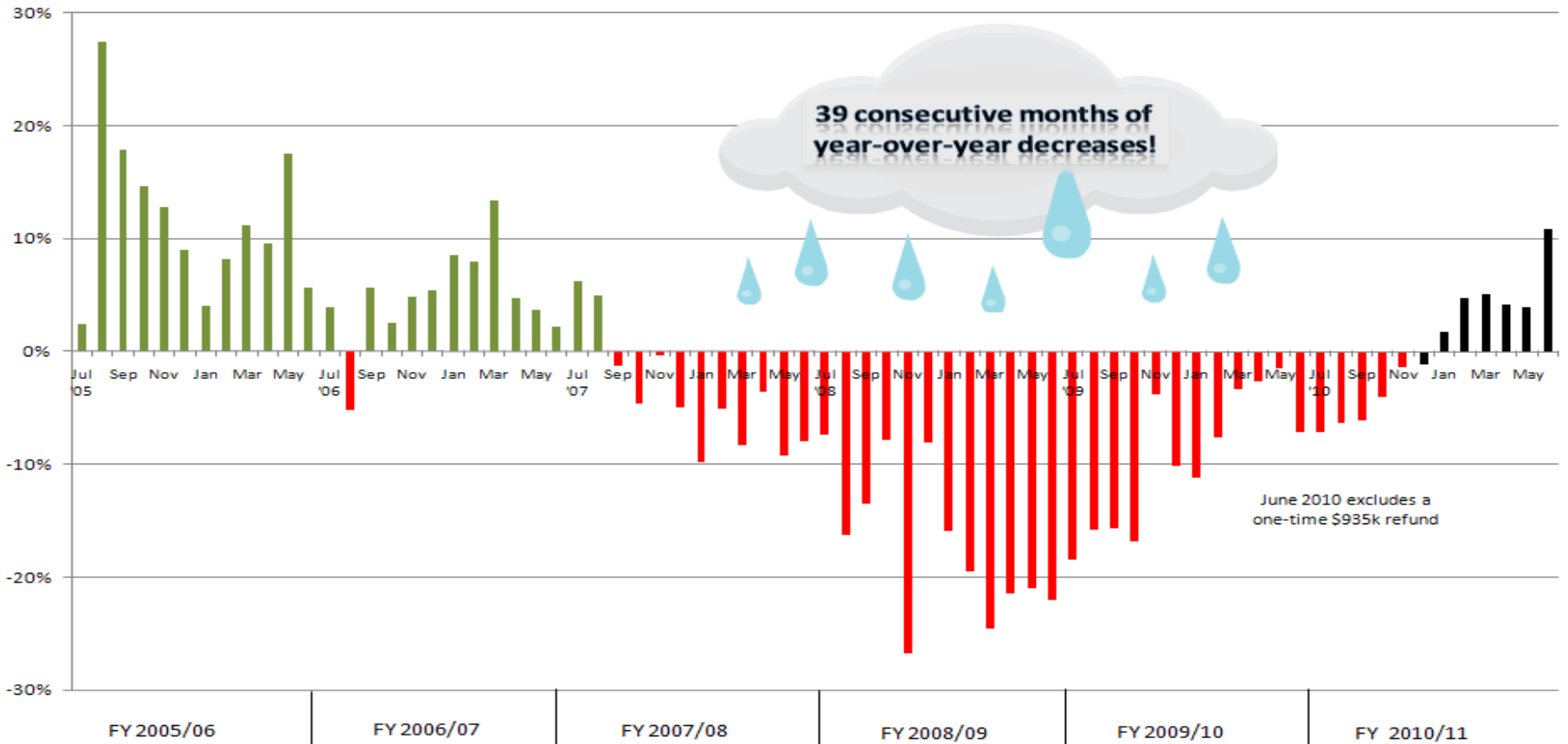
1% Sales Tax

Category: Total





City of Scottsdale 1% Sales Tax Year-Over-Year Change





FYTD General Fund Operating Sources as of 11/30/10 (in millions)

	Revised Budget	Actual	Change	% Change
1.1% Sales Taxes	\$33.5	\$32.1	(\$1.4)	-4%
State-Shared Revenues	20.5	19.8	(0.7)	-3%
Charges for Services/Other	17.4	18.4	1.0	6%
Property Taxes	9.6	9.4	(0.2)	-2%
Franchise Fees/In-Lieu Taxes	5.4	5.1	(0.3)	-6%
Bed Taxes	2.9	3.5	0.6	21%
Transfer In	7.0	7.9	0.9	13%
Total	\$96.3	\$96.2	(\$0.1)	0 %



FYTD General Fund Operating Uses as of 11/30/10 (in millions)

	Revised Budget	Actual	Change	% Change
Personnel Services	\$67.1	\$64.7	\$2.4	4%
Contractual	22.8	20.1	2.7	12%
Commodities	3.1	2.5	0.6	19%
Capital Outlay	1.1	0.1	1.0	91%
Debt Service & Contracts Payable	1.3	1.6	(0.3)	(23%)
Transfers Out	1.5	2.6	(1.1)	(73%)
Total	\$96.9	\$91.6	\$5.3	5%



FYTD Personnel Services as of 11/30/10

(in millions)

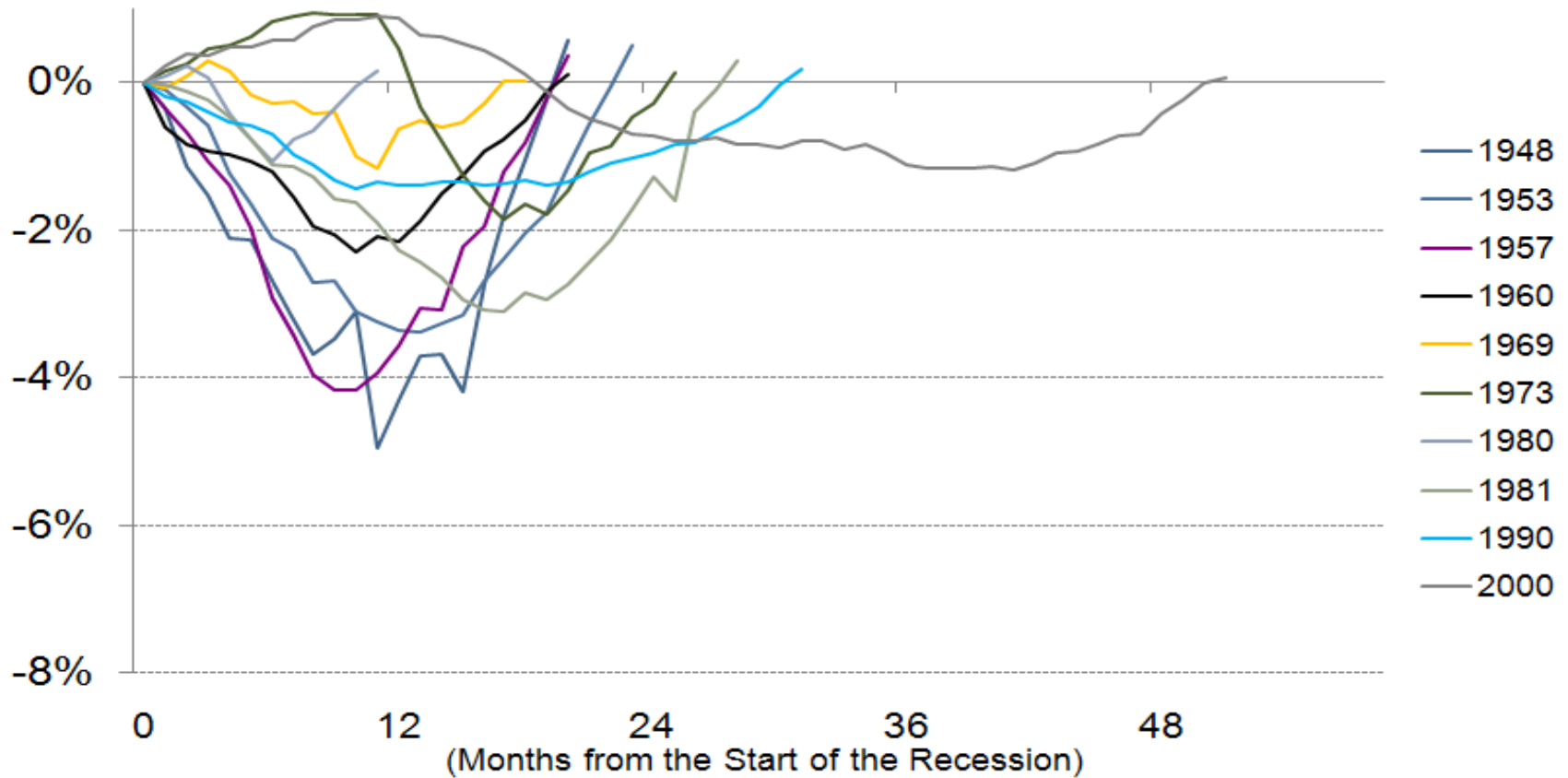
	2009/10 Actual	2010/11 Actual	2010/11 Revised Budget	Change	% Change
Salaries and Wages	\$52.8	\$49.3	\$50.5	\$1.2	2%
Overtime	2.2	2.0	2.6	0.6	23%
Retirement	5.7	5.6	5.8	0.2	3%
Health/Dental	6.4	4.2	4.3	0.1	2%
FICA	3.6	3.4	3.6	0.2	6%
Misc. Fringes	0.2	0.2	0.3	0.1	33%
Total	\$70.9	\$64.7	\$67.1	\$2.4	4%



Months to Recover Recessionary Job Losses



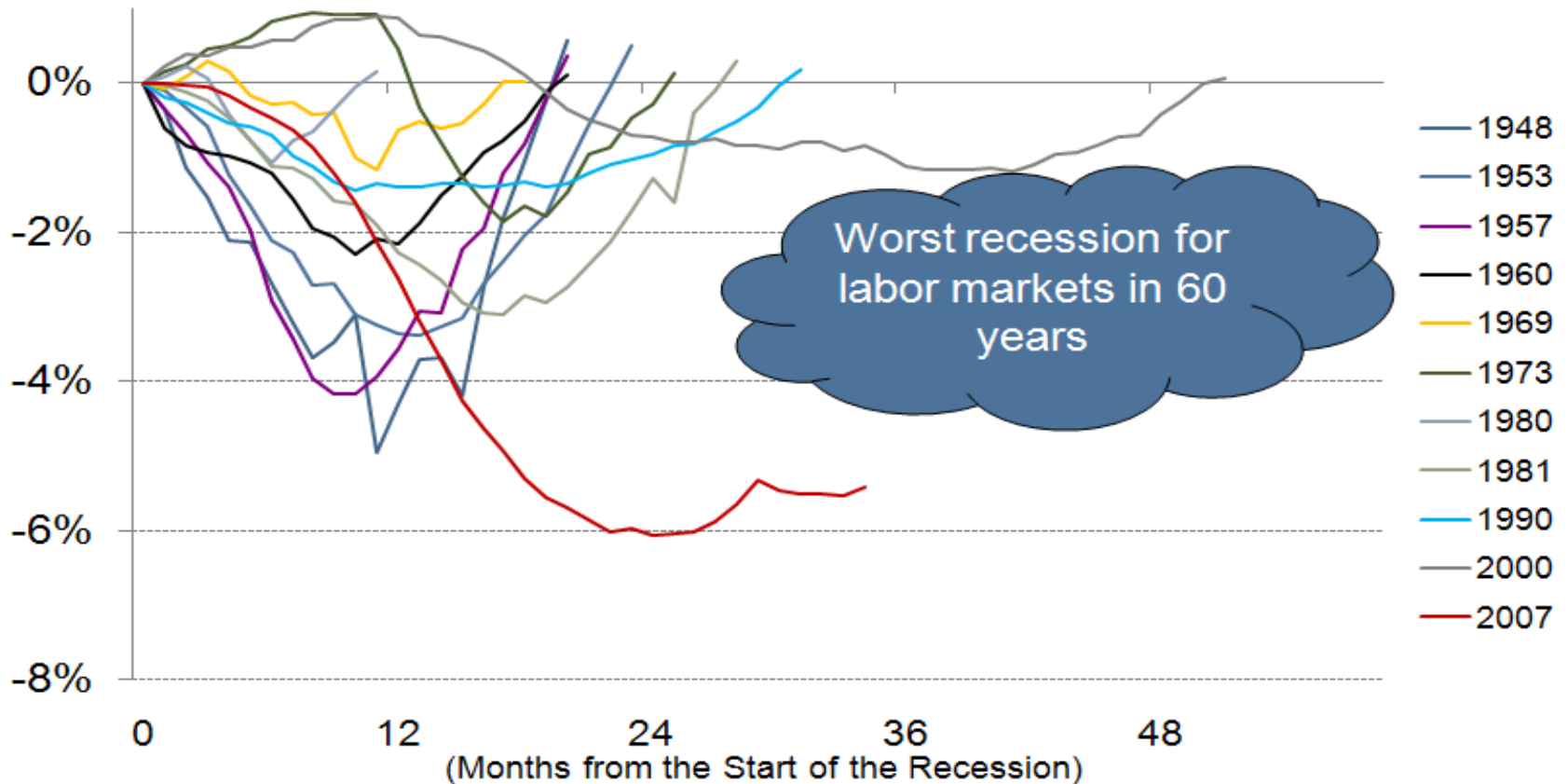
Cumulative % Change in Employment – From Start of Recession



Source: Bureau of Labor Statistics

Months to Recover Recessionary Job Losses

Cumulative % Change in Employment – From Start of Recession



Source: Bureau of Labor Statistics