

Build Fire Station 613 (Desert Foothills)

Estimated Project Cost: \$5,100,000

PROJECT DETAILS

Project Summary

Replace a temporary modular facility in the Desert Foothills area at Jomax and Hayden roads. The new station will include crew quarters and facilities, office space, OSHA-certified decontamination area, safety gear storage and an apparatus bay.

Project Cost

Design	\$608,000
Bond Issuance Cost	\$60,000
Construction	\$3,216,000
Project Management	\$540,000
Contingency	\$676,000
Total Cost	\$5,100,000

Project Location

Jomax and Hayden roads



drive is an approximately a quarter mile access road that leads to Pima Road which adds to response times in the area.

Land was purchased in 2015 at Hayden Road and Jomax Road with the intent to build a permanent fire station to improve response times in that service delivery area. The new construction would improve response times to customers, be more accessible to the community, and provide a permanent home for the firefighters stationed here that meets industry safety standards.

ANALYSIS & ASSESSMENT

Safety

The current facility does not have OSHA-certified decontamination area or a storage area for personal protective equipment that meets industry standards as outlined in National Fire Protection Association 1500 and 1851 recommendations.

Additionally, this location has had two incidents within the last two years of the 'chlorine' alarm system activating due to operational problems of the water booster pump station that have impacted operations by forcing fire department units to go out of service and be displaced from their primary location.

What is the customer experience?

EXTERNAL: The current location and distance from a primary thoroughfare continues to have a negative impact response times for the customers in the service delivery area.

INTERNAL: The current facility is not commensurate with contemporary industry standards or City of Scottsdale employee expectations.

Recent Staff Action

The City Council recently approved and the City of Scottsdale was the successful bidder on a parcel of land located on the southwest corner of Hayden Road and Jomax Road with the intended use as the site for Station 613.

The Scottsdale Fire Department, following the recommendations of COS Audit Report No. 1413, updated their Standard of Coverage and Deployment Plan document by contracting with Emergency Services Consulting International to provide a third-party perspective. The contractual scope of work identified three components to be completed; Standard of Coverage, Facilities Assessment, and Fleet Assessment.

The land purchased at Hayden Road and Jomax Road was confirmed in the Standard of Coverage report as the appropriate location to improve response times in that service delivery area.

The consultant also hired a third-party architect to work with COS Facility personnel to complete the comprehensive fire facilities assessment. In the executive summary of the 'Fire Station Assessment' specific to FS613, "Scottsdale Fire Station No. 13 is a temporary facility co-located with a Scottsdale Well site so public access/visibility is limited. The fire station is a modular trailer housing fire station living areas, a covered canopy for the fire apparatus and (2) con-ex boxes for storage and turn-out gear. The facility is not very functional and does not meet the current standards established by the City of Scottsdale Fire Dept. The facility does not meet current ADA standards. The electrical power to the facility is fed from the well site and the facility does have emergency power. The facility has a single package A/C unit and sewage ejector/force main pumps to the well site sewer system. Interior finishes are all very dated and due to age the facility may contain hazardous materials that have not been remediated.

The overall assessment of the facility is very poor and has reached the limits of its functional life. It is our understanding that the replacement/relocation of the facility has been authorized by City of Scottsdale City Council."

Community Involvement

There will be multiple opportunities for community involvement through the design and construction of the new station.

Council Goals

The implementation of this project supports the Council Goal: Enhance Neighborhoods.

RESOURCE IMPACTS

Operating Cost

There will be an increase to operating costs as we transition from a 800 sq/ft single wide trailer to a 10,000 sq/ft contemporary fire station. This is a Facility asset staffed 24 hours per day 365 days per year and would be similar in ongoing operation costs of like sized fire stations housing four employees.

Staffing, Workload Impact

There will be no impact on staffing or workload due to the new station. Existing employees will be relocated into this facility.

Maintenance Requirements

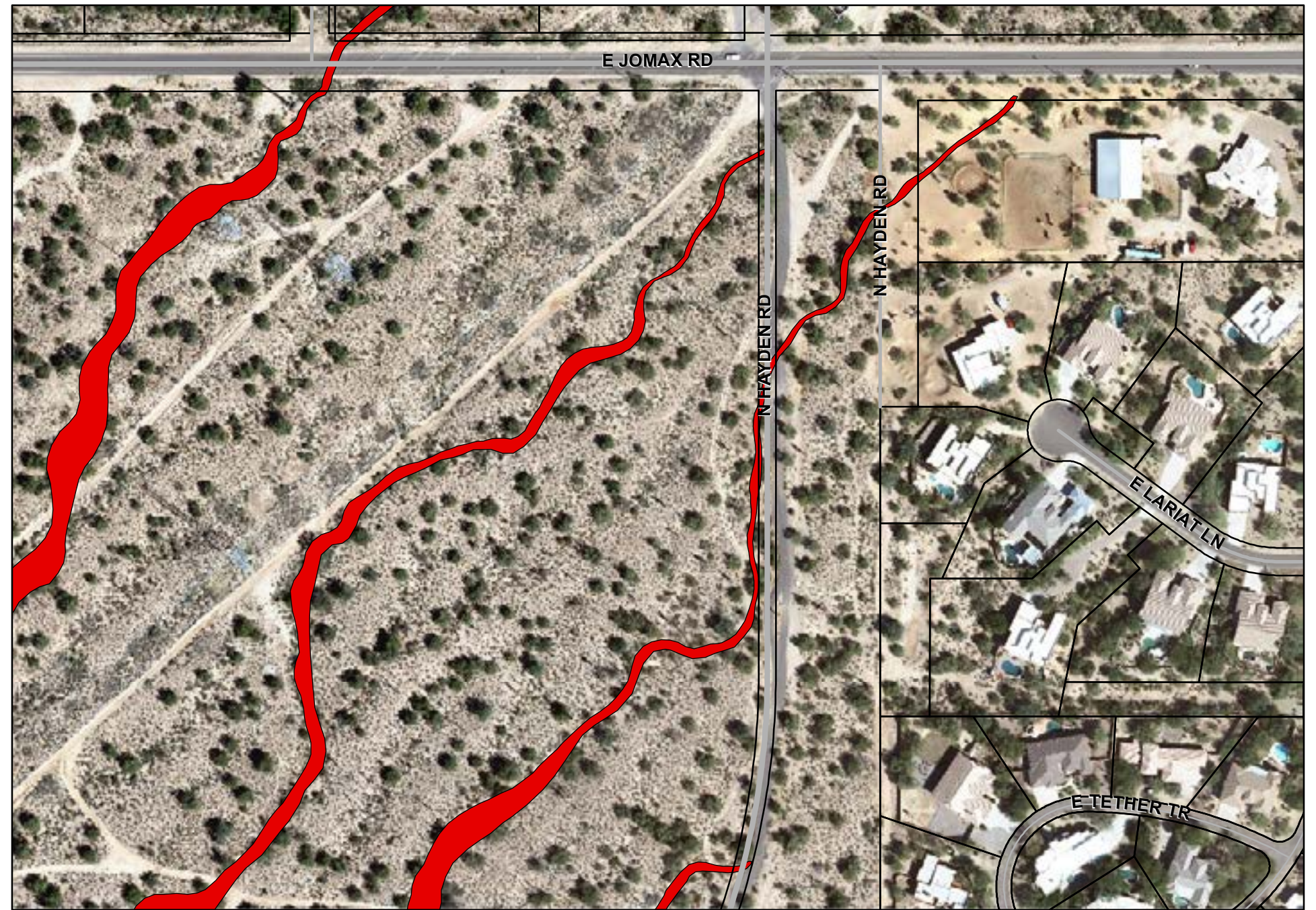
This is a Facility asset that would fall into their normal and routine periodic maintenance schedule similar to other fire stations of like size.

Impact if this project is not implemented

The fire department would continue to house employees and respond to customer needs from the current location.

Supplemental Information:

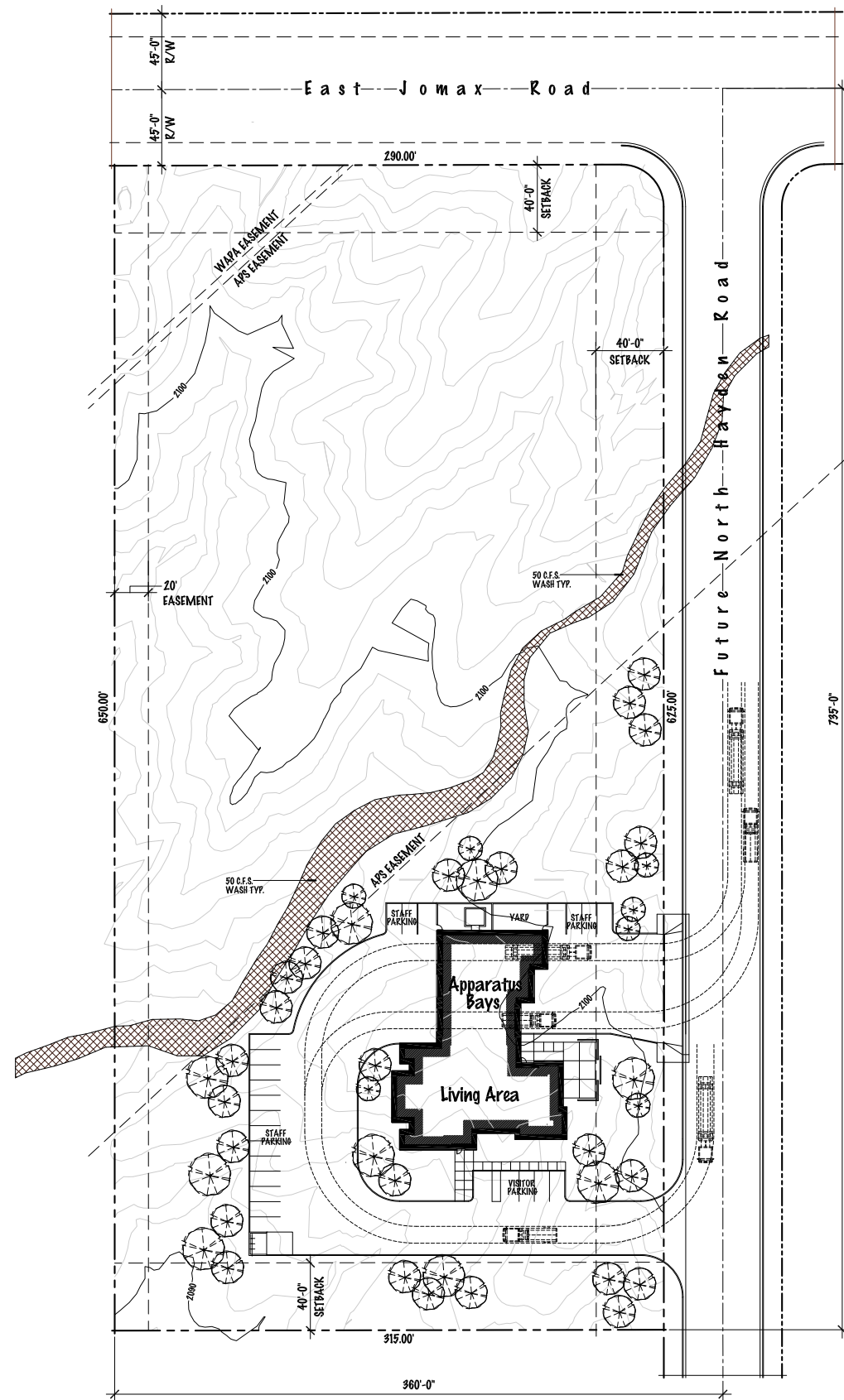
1. Facility location map
2. Design plans



dlipinski
4/3/2015 12:14:43 PM

Notice: This document is provided for general information purposes only. The City of Scottsdale does not warrant its accuracy, completeness, or suitability for any particular purpose. It should not be relied upon without field verification.



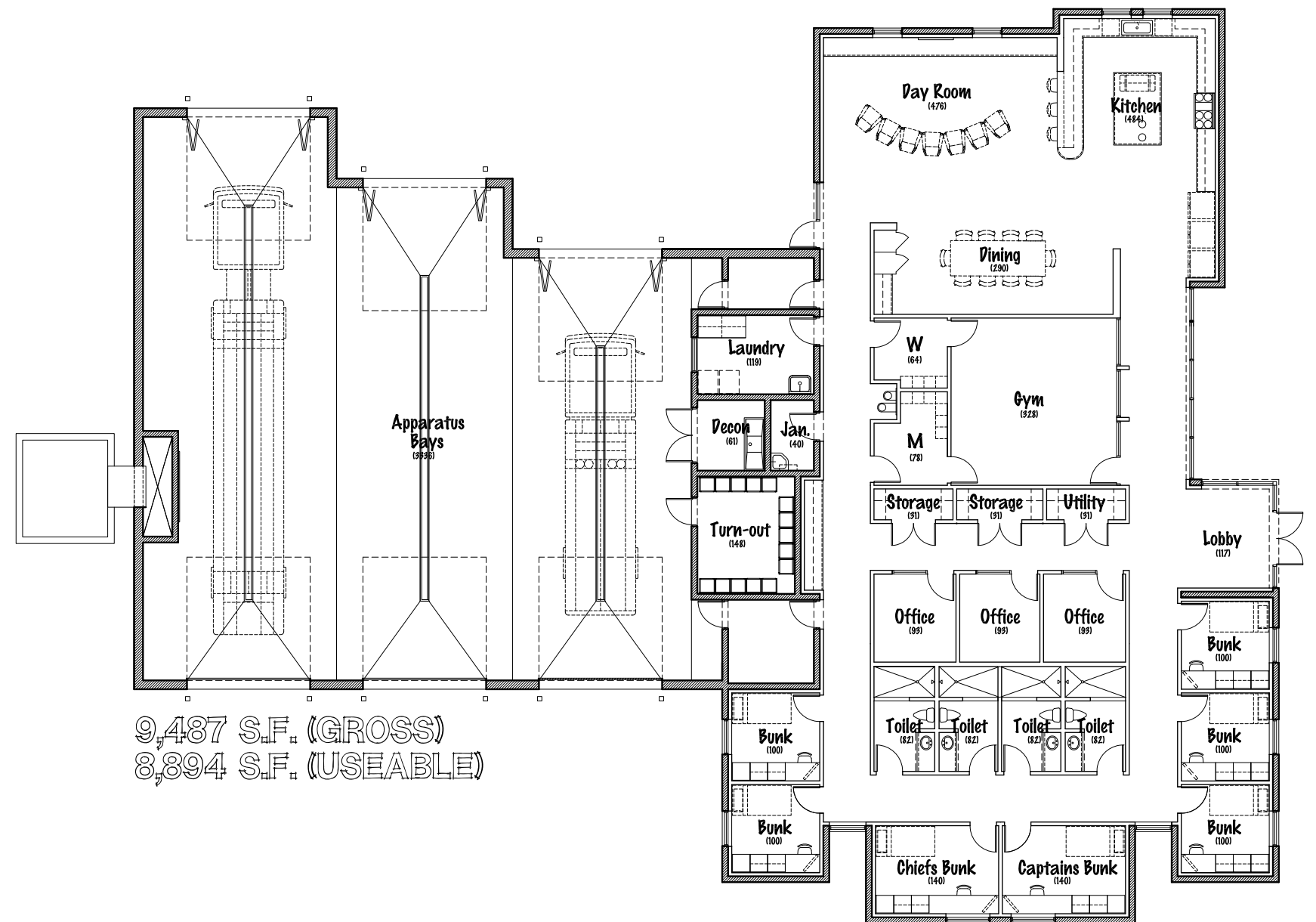


9,487 S.F. (GROSS)
8,894 S.F. (USEABLE)



City of Scottsdale/ Fire Station 613
JOMAX ROAD / FUTURE HAYDEN ROAD
CONCEPTUAL SITE PLAN

SCALE: N.T.S.



9,487 S.F. (GROSS)
8,894 S.F. (USEABLE)



City of Scottsdale/ Fire Station 613
JOMAX ROAD / FUTURE HAYDEN ROAD
CONCEPTUAL FLOOR PLAN

SCALE: N.T.S.



NORTH