

Carefree Highway

Public Meeting

February 12, 2024

Tonight's Meeting

Introduction

Erin Walsh – City of Scottsdale Public Works Public Information Officer

Project Overview

Nathan Domme – City of Scottsdale Transportation Planning Manager

Preliminary Design

Carlos Sanchez–Soria – TY Lin

Next Steps, Questions & Answers

Erin Walsh – City of Scottsdale Public Works Public Information Officer



Project Information

Project Budget

\$21.5 million

Project Funding

Regional Sales Tax – Arterial Life Cycle Program \$15 million

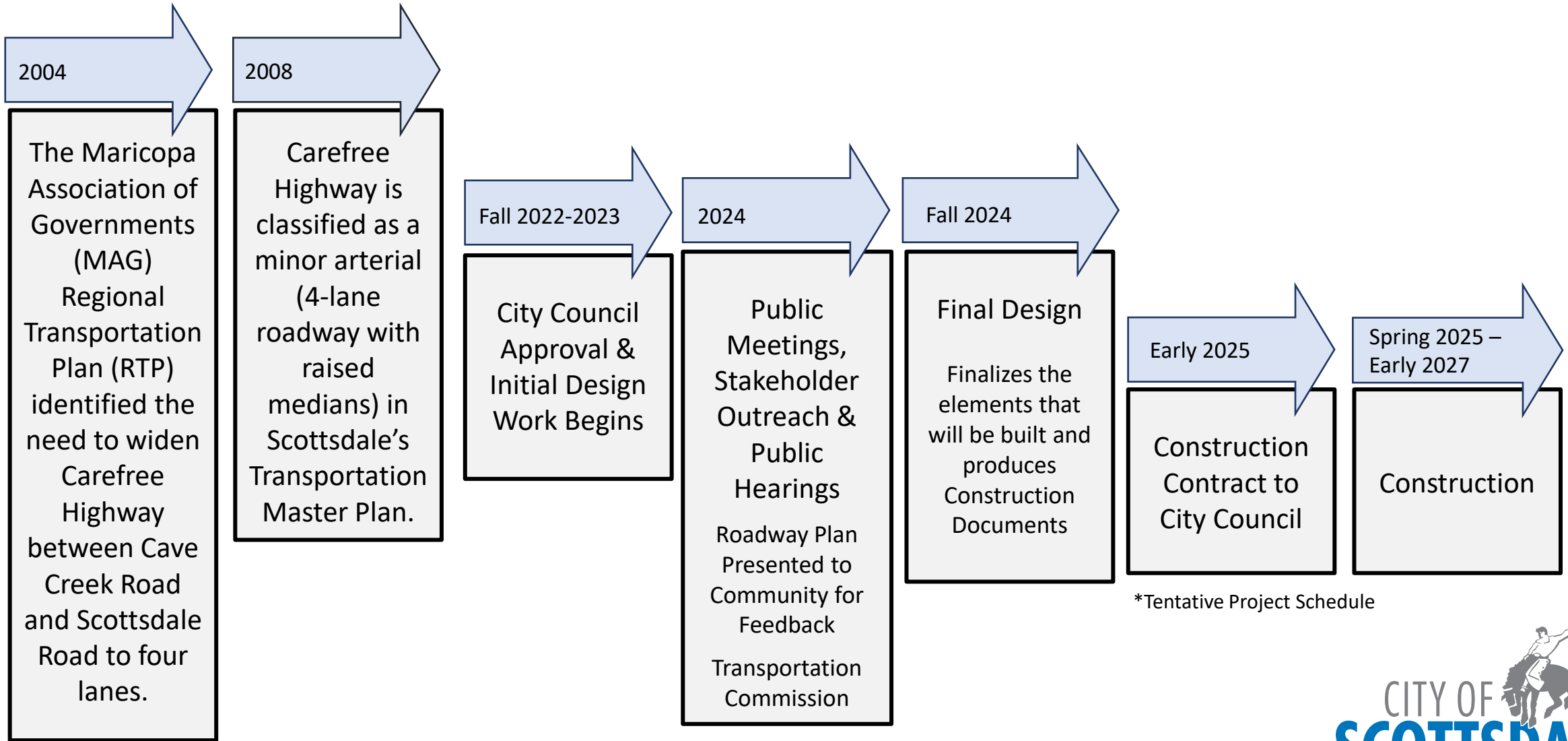
City of Scottsdale 2019 Transportation 0.1% Sales Tax \$6.5 million

Project Description

This project will design and construct improvements to Carefree Highway, from Cave Creek Road to Scottsdale (Tom Darlington) Road, to improve the capacity and operational efficiency of the roadway.

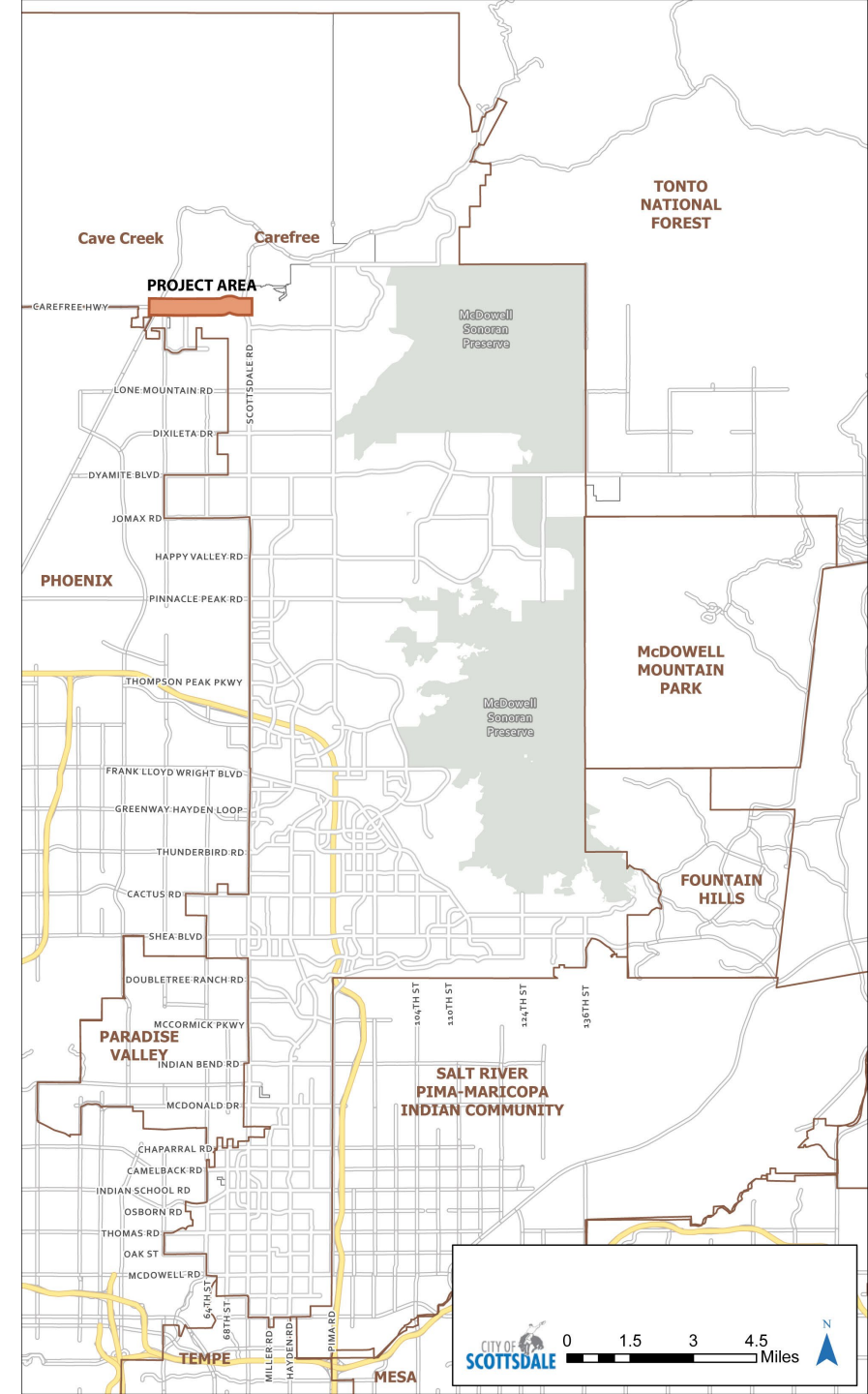
Carefree Highway will be expanded from two to four lanes (two lanes in each direction) with a center landscaped raised median island and will include bike lanes, shared-use path/trail, and curb and gutter. Drainage improvements and utility work will also take place as part of the project.

Where are we in the process?

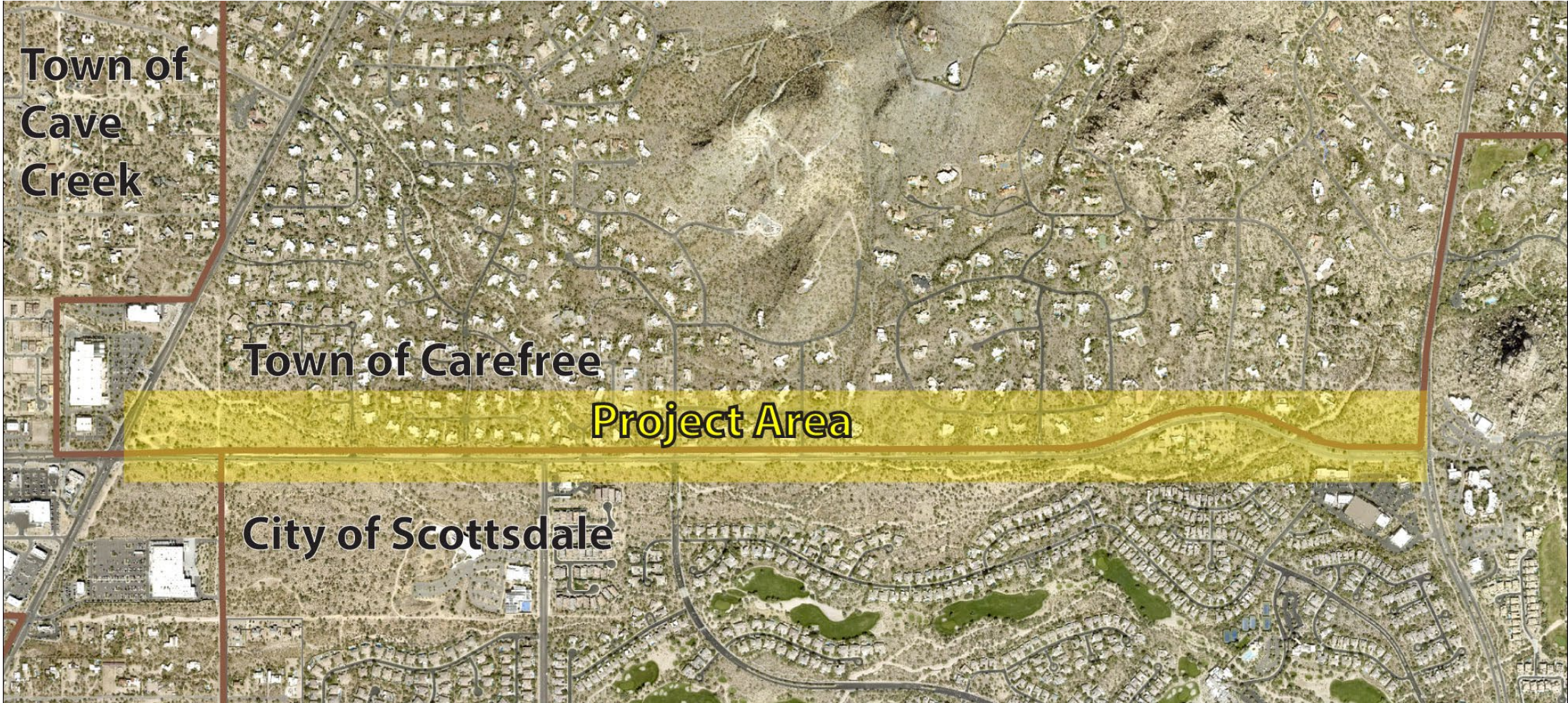


*Tentative Project Schedule

Carefree Highway: Cave Creek Road to Scottsdale Road



Carefree Hwy Project Area



Project Background and Need

Urban Road of Regional Significance

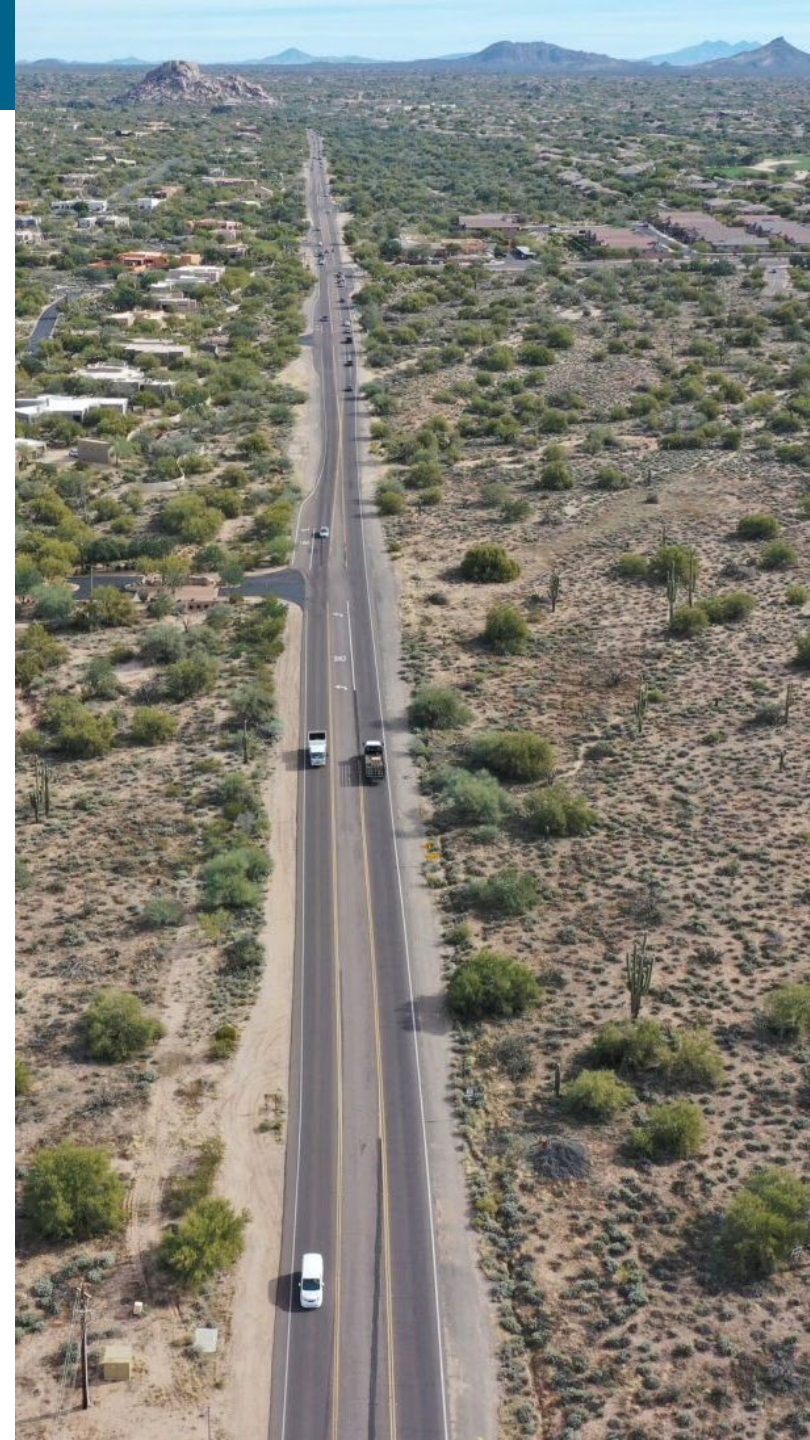
The Carefree Highway is designated as an Urban Road of Regional Significance that will help ensure regional mobility

Scenic corridor

Carefree Highway serves as a Scenic corridor for the City of Scottsdale, the project looks to minimize adverse impacts and preserve the corridor's environment.

Improved Design

As a minor arterial, Carefree Hwy is Intended to have improved features.



Transportation Action Plan & Project History

2004

Maricopa Association of Governments (MAG) Regional Transportation Plan (RTP) identified the need to widen Carefree Highway between Cave Creek Rd and Scottsdale Rd to four lanes.

2008

Classified as a Minor Arterial (four lanes with raised medians).

2022

Project starts and was regionally funded for the later part of the Arterial Life Cycle Program (ALCP)

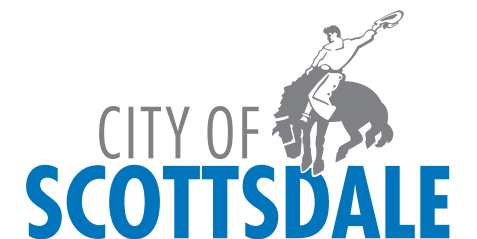
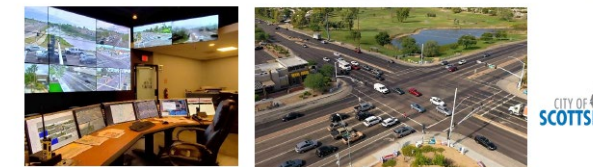
2023 - 2024

30% design and Public Outreach

Transportation Action Plan (2022) Street Element

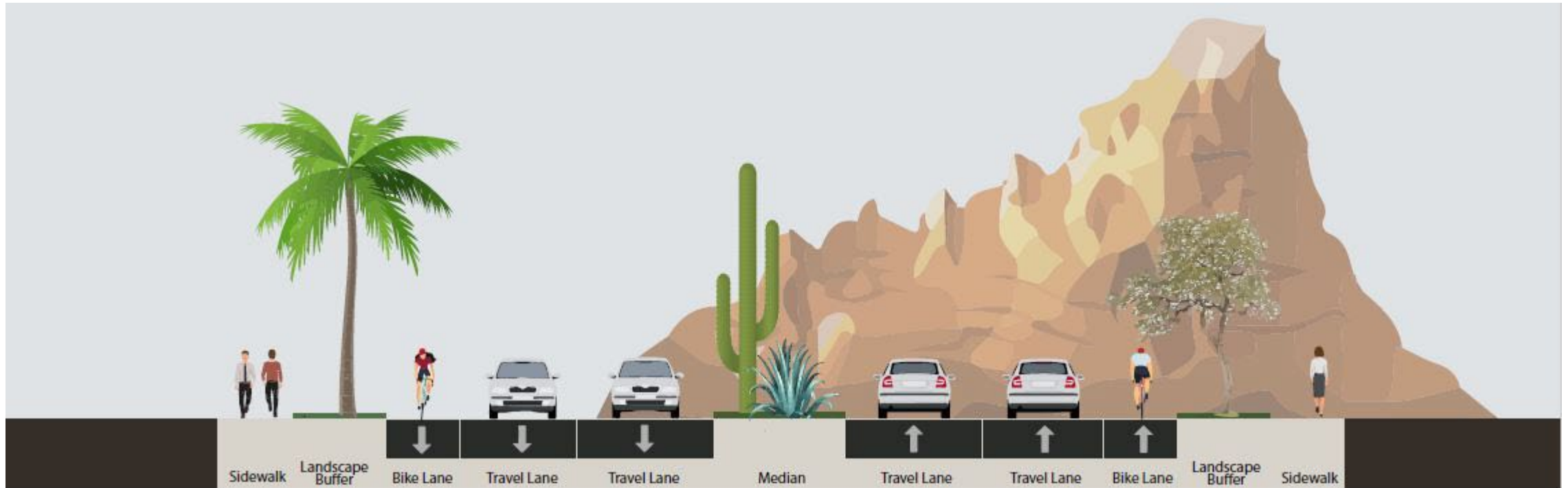
Project aligns with the goals of the Transportation Action Plan Street Element

- Complete Streets Policy
- Roundabout First Policy
- Noise Mitigation Analysis Policy



Design Standards for Minor Arterials

- Cross-sections vary to fit surrounding topography
- Design Right of way 110Ft: Corridor Right of Way between – 110ft and 155ft
- Design Speed: 45 mph



Source: City of Scottsdale Transportation Action Plan (2022)

Project Features in development

Raised Landscaped Median

Raised Median to separate traffic moving in different directions

Two additional travel lanes

Additional travel lanes that increase capacity.

Bike Lanes on both sides

Improve multimodal travel along the corridor.

Shared-use path/trail on the southern side

Improve regional active transportation through the corridor.



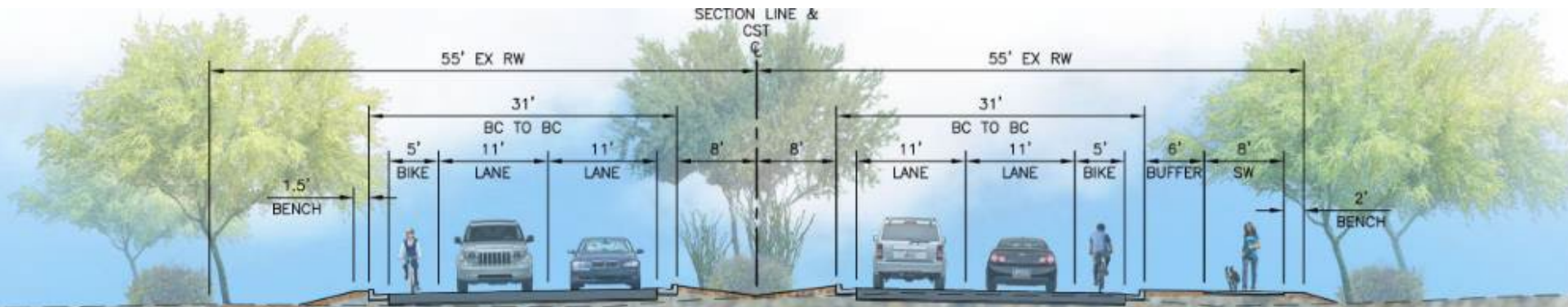
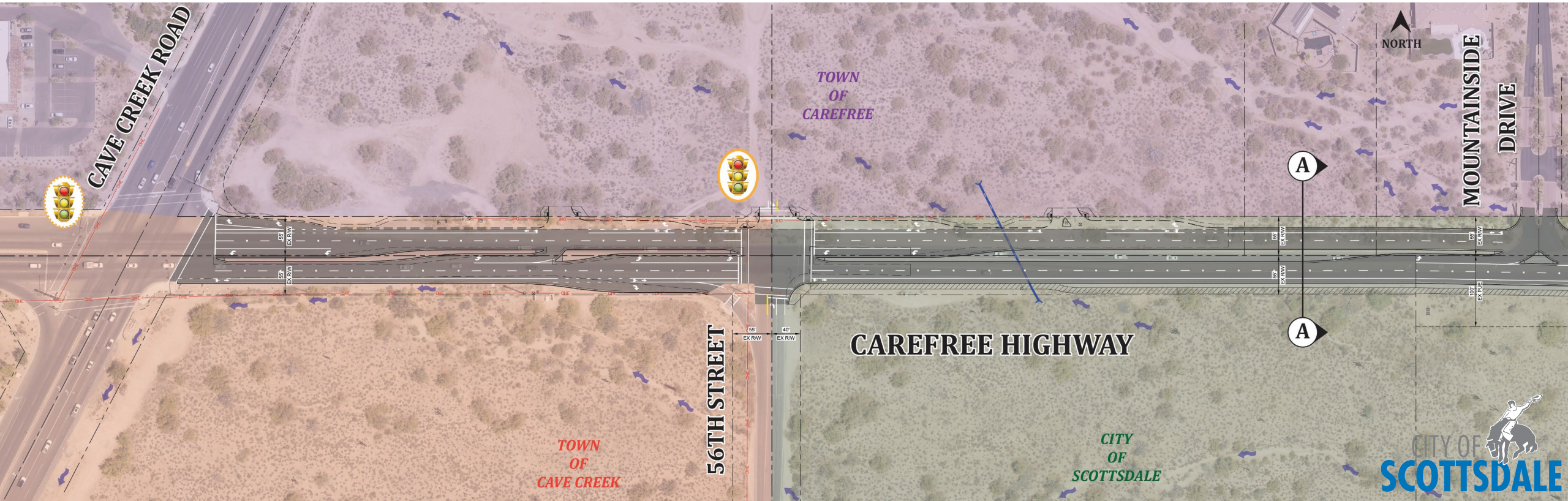
Carefree Highway: Project Status

Project Design Documents

- **Project Assessment**
 - Evaluation of Alternatives
 - Major Utility Impacts
 - Right of Way Acquisition
 - Development of Cost Estimate and Schedule
- **Traffic Analysis**
 - Evaluate Intersections, Lane Configurations and Turn Lane Storage
 - Traffic Signal Warrant Analysis at Terravita Way (2022, 2025 and 2045)
 - Crash Analysis (2019-2021)
- **30% Preliminary Design**
 - Horizontal and Vertical Geometry
- **Native Plant Survey**
 - White = Salvage
 - Blue = Non-Salvageable

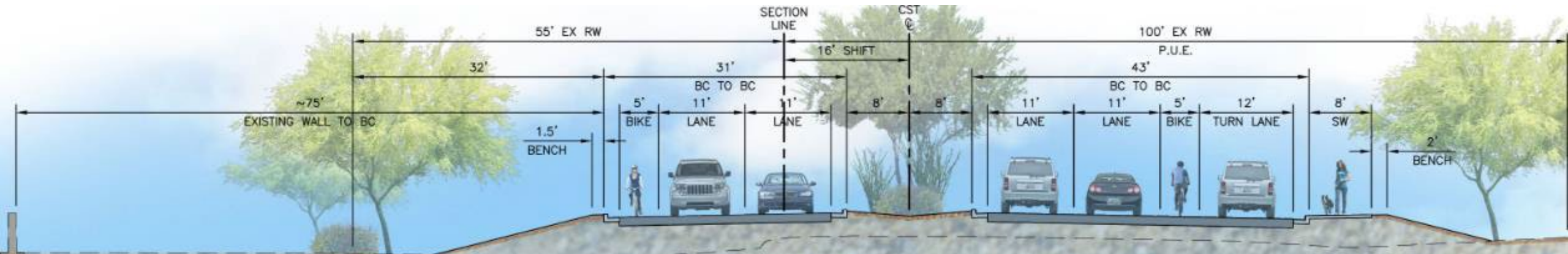
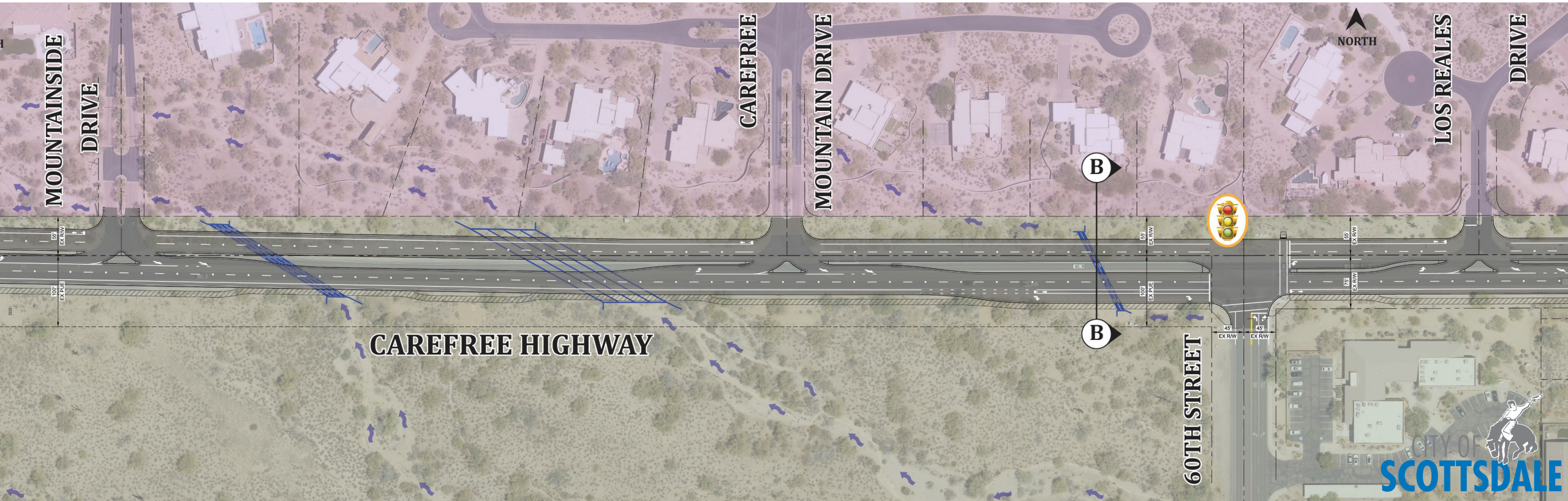


Carefree Highway: Cave Creek Road to Mountainside Drive



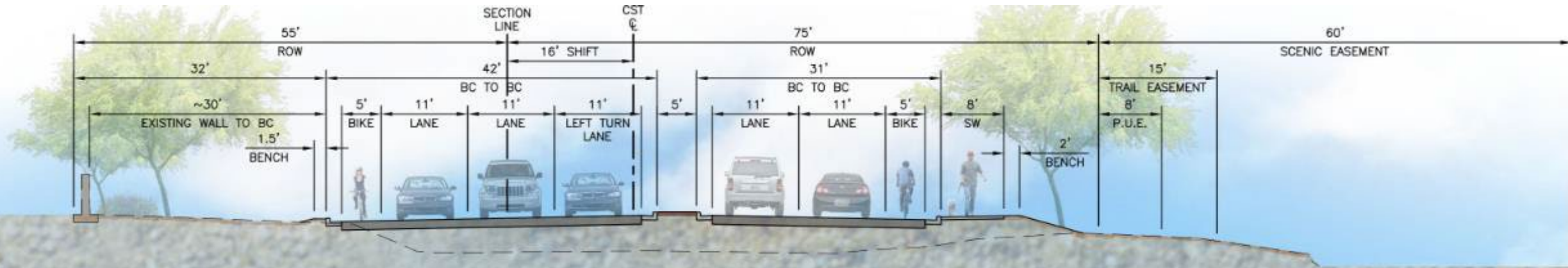
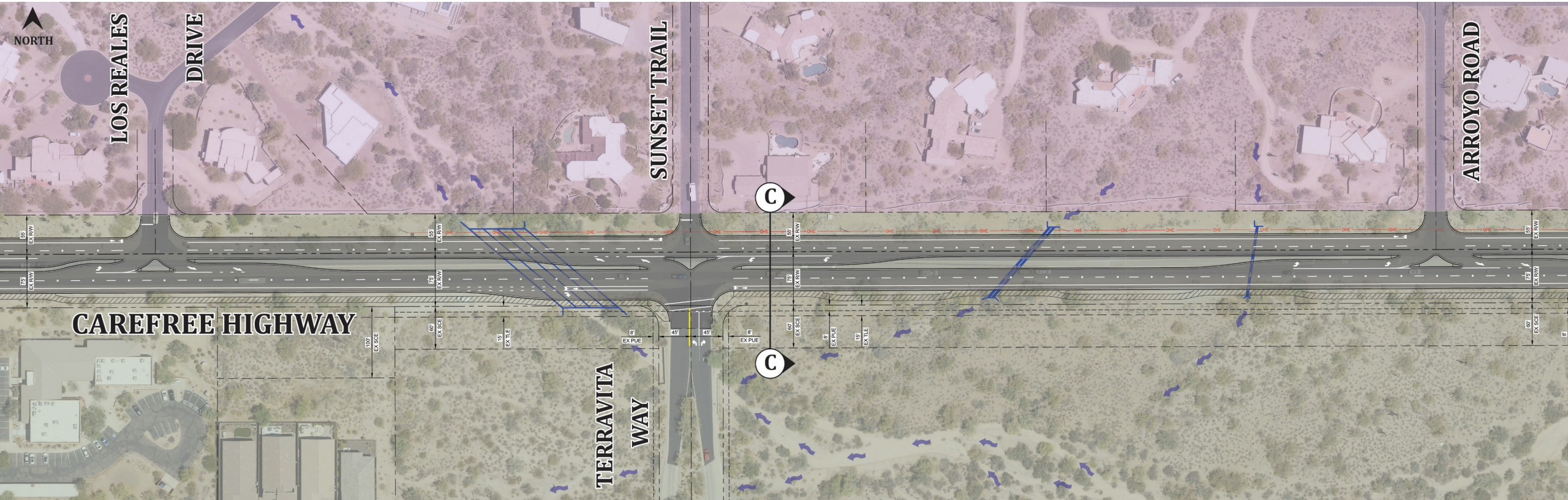
SECTION A-A : STA 134+00 (Looking East)

Carefree Highway: Mountainside Drive to Los Reales Drive



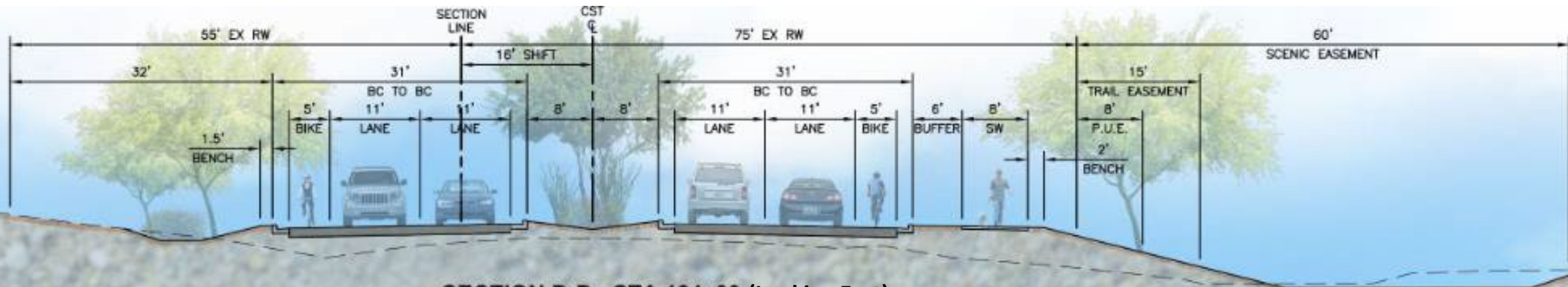
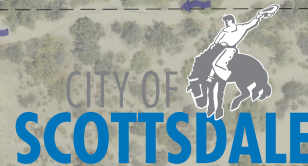
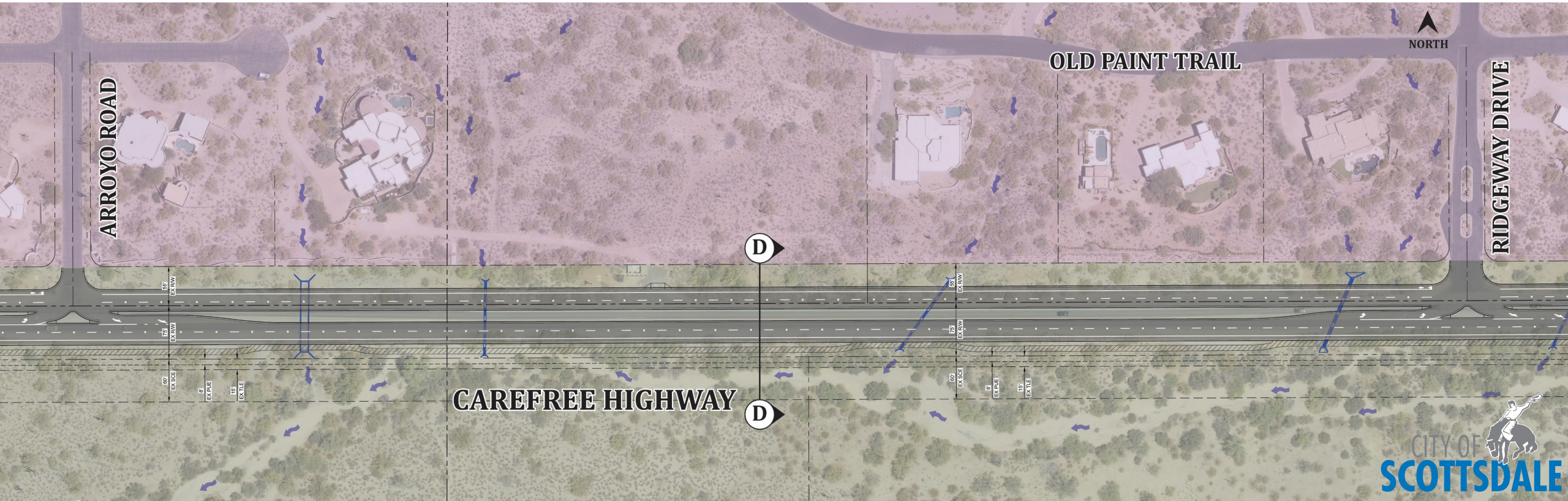
SECTION B-B : STA 151+00 (Looking East)

Carefree Highway: Los Reales Drive to Arroyo Road



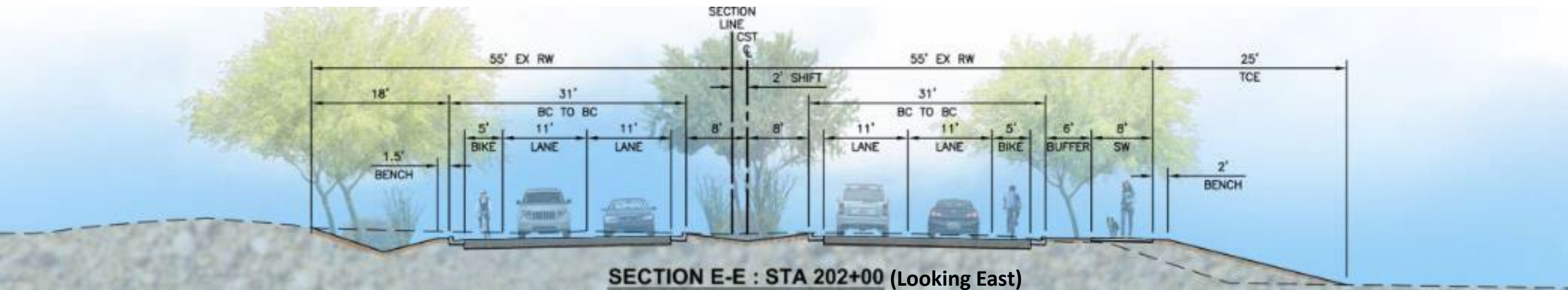
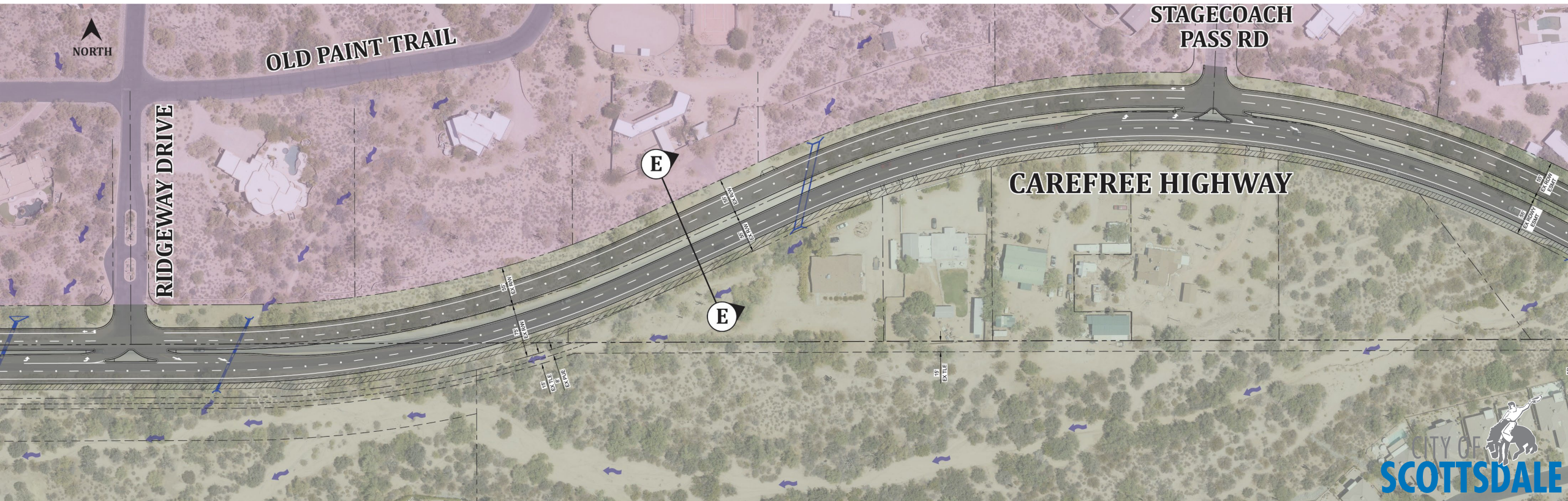
SECTION C-C : STA 165+00 (Looking East)

Carefree Highway: Arroyo Road to Ridgeway Drive

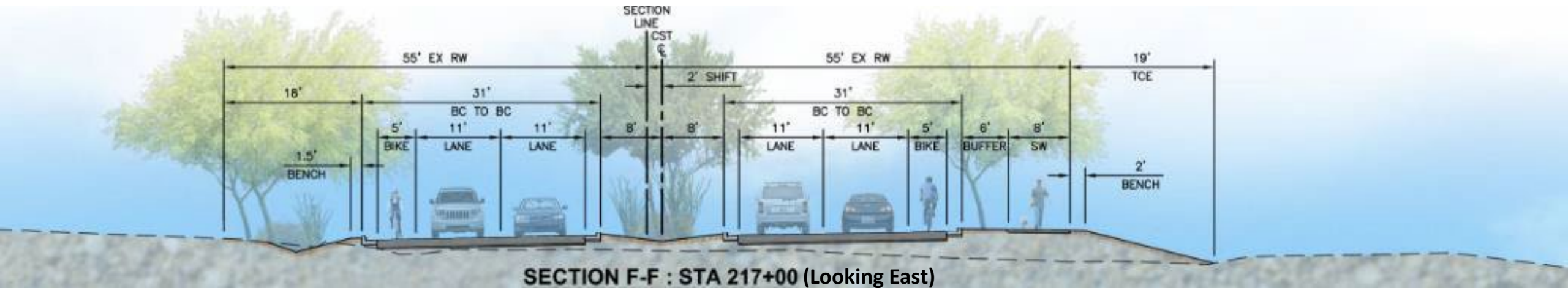
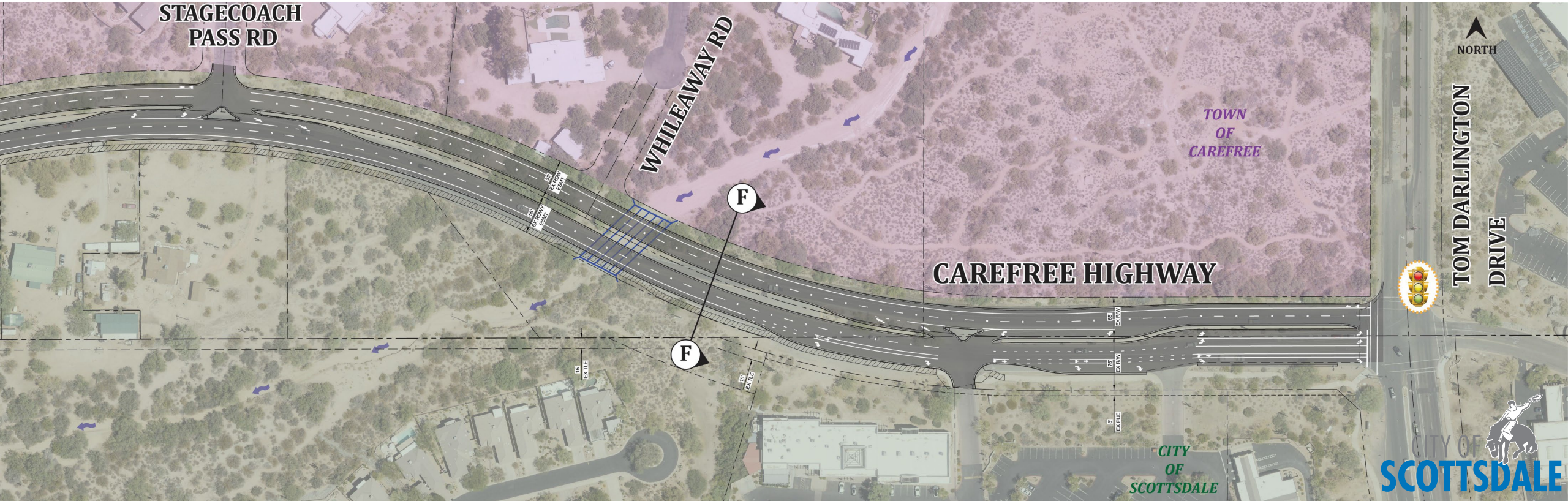


SECTION D-D : STA 184+00 (Looking East)

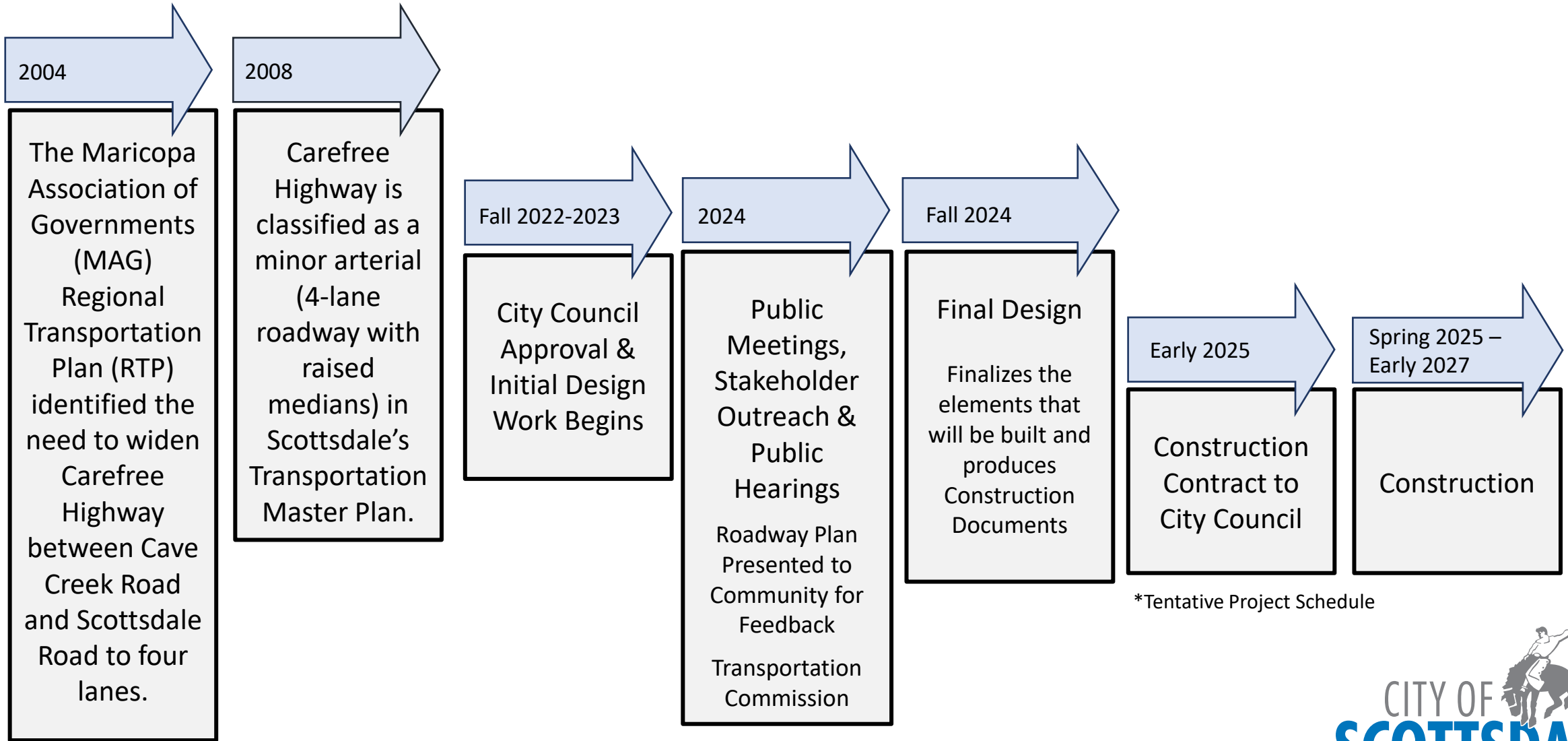
Carefree Highway: Ridgeway Drive to Stagecoach Pass Road



Carefree Highway: Stagecoach Pass Road to Scottsdale Road



Where are we in the process?



*Tentative Project Schedule

Questions?

Please turn in your comment card before you leave tonight.

This presentation and a comment card are also available on the project website.

For additional information please visit ScottsdaleAZ.gov, search “Carefree Highway”