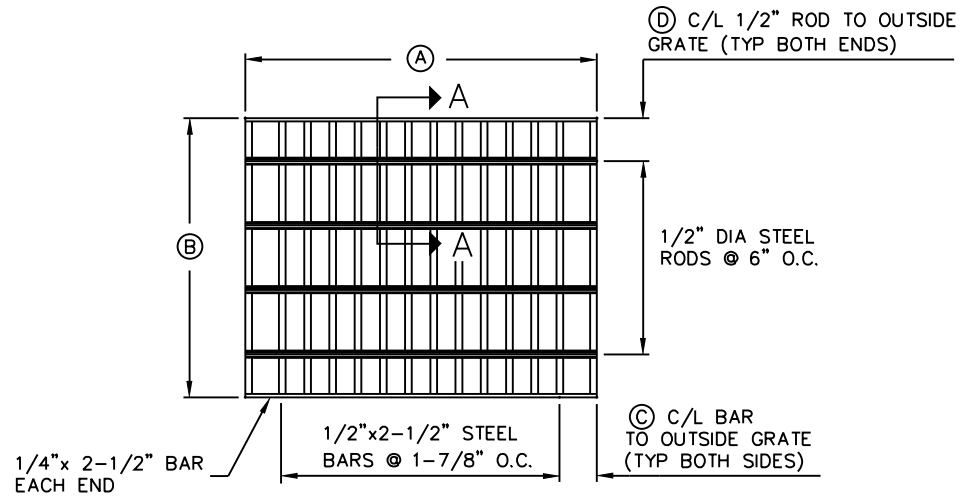
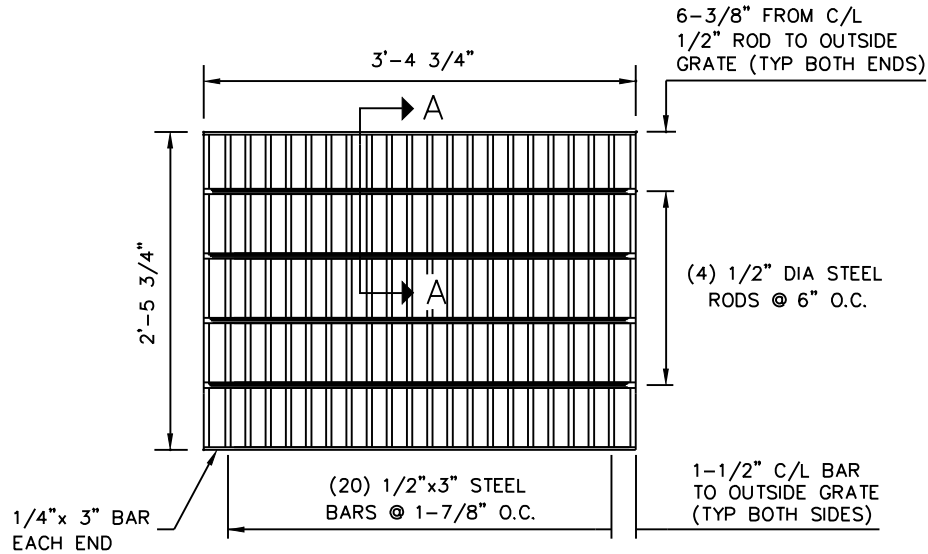
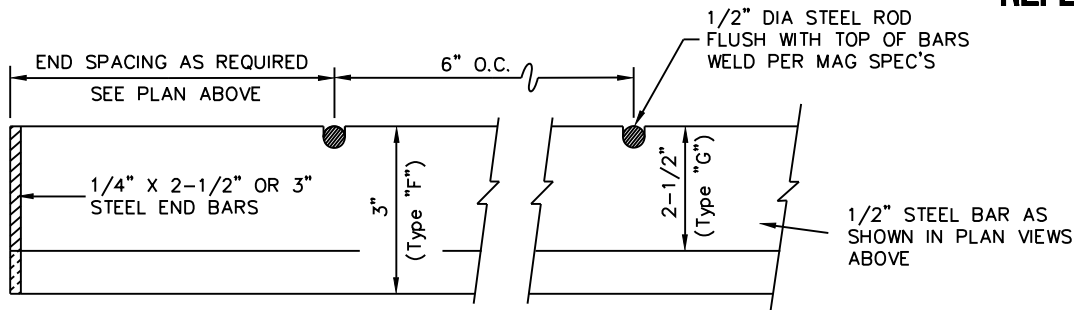


REVISED 4/15/09



GRATE FOR TYPE "F" CATCH BASIN
REPLACES GRATE SHOWN IN MAG STD. DETAIL 535

GRATE FOR TYPE "G" & "H" CATCH BASINS
REPLACES GRATE SHOWN IN MAG STD. DETAILS 537/539



SECTION A-A

NOTES:

1. ALL MATERIALS AND FABRICATION TO BE AS SPECIFIED IN MAG STANDARD DETAIL NO. 540-2.
2. MAXIMUM TOTAL DIMENSION BETWEEN OUTSIDE OF GRATE AND INSIDE OF FRAME SHALL NOT EXCEED 3/8".

TYPE "G" GRATE DIMENSIONS		
	SINGLE GRATE	DOUBLE GRATE
① A	2'-2"	4'-3 1/2"
② B	2'-2"	2'-2"
③ C	2-11/16"	2-5/16"
④ D	0'-4"	0'-3 3/4"

DETAIL NO.
2535

City of Scottsdale
Standard Details

APPROVED BY:
Scottsdale Standards & Specifications Committee

CATCH BASIN GRATES

DETAIL NO.
2535