

# Scottsdale Police Department 2020 Statistics and Highlights

- **2020 is the final year that the Scottsdale Police Department will report Summary Crime Statistics to the Federal Bureau of Investigations**
  - UCR Summary Part 1 Crime Rate is at the lowest level in department history at 21.9 per 1,000 residents
  - UCR Part 1 Crime Volume decreased by 1.68% from 2019
  - Part 1 Total Clearance Rate is 24.3% which exceeds National and State rates
    - 2019 averages for Part 1 clearances in the US were 21.5% and in Arizona were 19.8%
  - Part 1 Persons Crimes Clearance Rate is 52.3%
  - Part 1 Property Crimes Clearance Rate is 21.7%



# Uniform Crime Reporting Summary Highlights

- **Rapes and Robberies decreased from 2019**
  - Rapes decreased by 19.9% from 2019 and 2.2% from its 5-year average
  - Robberies decreased by 11.8% from 2019 and 4.7% from its 5-year average
- **Thefts decreased by 5.0% from 2019**
  - Pocket-picking decreased by 58.4% from 2019 and 44.4% from its 5-year average
  - Shoplifting decreased by 14.0% from 2019 and 23.3% from its 5-year average
  - Theft from buildings decreased by 29.9% from 2019 and 38.4% from its 5-year average
  - Theft from coin-operated machines decreased by 61.1% from 2019 and 65.3% from its 5-year average
  - Residential burglaries decreased by 24.3% from 2019
  - Non-forcible entry burglaries decreased by 13.5% from 2019





# Scottsdale Police Department

## 2020 UCR Analysis



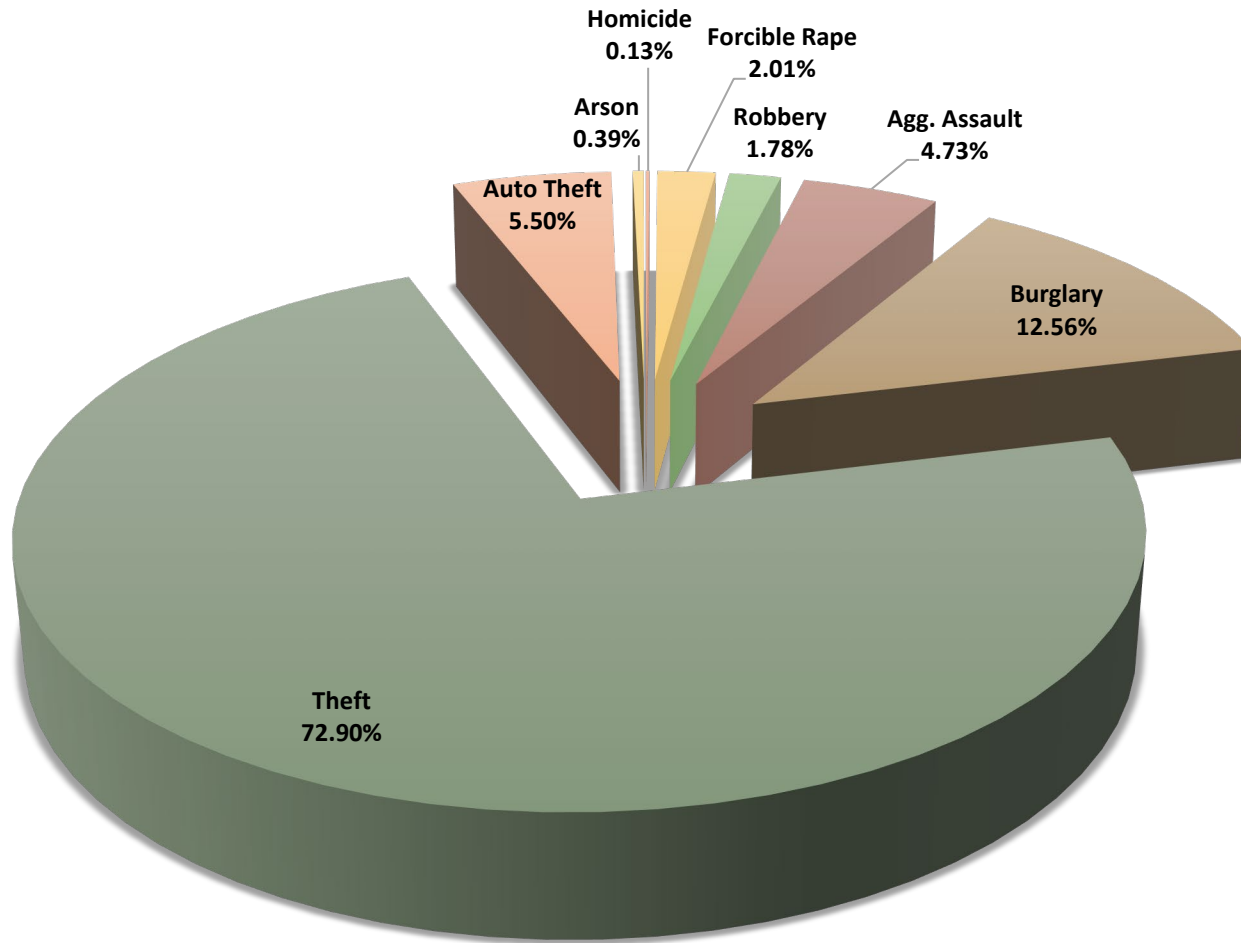
2020 UCR Part 1 Crime Analysis											
Crimes Against Persons											
Incident Type	2015	2016	2017	2018	2019	5 Yr Avg	Normal Activity Range	2020	% Chg From 2019	% Chg From 5 Yr Avg	Current Activity Level Compared to Historical Activity Levels
Criminal Homicide	8	4	5	7	3	5	4 to 7	7	133.3%	29.6%	
Forcible Rape	106	90	103	122	136	111	95 to 127	109	-19.9%	-2.2%	
Robbery	100	112	100	87	110	102	93 to 111	97	-11.8%	-4.7%	
Agg Assault	222	163	188	206	166	189	166 to 212	257	54.8%	36.0%	
<b>Total Person Crimes</b>	<b>436</b>	<b>369</b>	<b>396</b>	<b>422</b>	<b>415</b>	<b>408</b>	<b>384 to 431</b>	<b>470</b>	<b>13.3%</b>	<b>15.3%</b>	
Crimes Against Property											
Incident Type	2015	2016	2017	2018	2019	5 Yr Avg	Normal Activity Range	2020	% Chg From 2019	% Chg From 5 Yr Avg	Current Activity Level Compared to Historical Activity Levels
Burglary	829	768	878	711	662	770	692 to 847	683	3.2%	-11.3%	
Larceny-Theft	4311	4681	4346	4700	4173	4442	4231 to 4653	3963	-5.0%	-10.8%	
Motor Vehicle Theft	192	249	246	272	264	245	217 to 273	299	13.3%	22.2%	
Arson	10	13	23	17	15	16	11 to 20	21	40.0%	34.6%	
<b>Total Property Crimes</b>	<b>5342</b>	<b>5711</b>	<b>5493</b>	<b>5700</b>	<b>5114</b>	<b>5472</b>	<b>5246 to 5698</b>	<b>4966</b>	<b>-2.9%</b>	<b>-9.2%</b>	

2020 Larceny-Theft Analysis											
Incident Type	2015	2016	2017	2018	2019	5 Yr Avg	Normal Activity Range	2020	% Chg From 2019	% Chg From 5 Yr Avg	Current Activity Level Compared to Historical Activity Levels
Pocket Picking	88	42	42	39	77	58	37 to 78	32	-58.4%	-44.4%	
Purse Snatching	8	4	7	3	2	5	2 to 7	3	50.0%	-37.5%	
Shoplifting	1442	1363	1203	1237	1139	1277	1167 to 1387	979	-14.0%	-23.3%	
From Vehicle/Parts	992	1320	1274	1619	1392	1319	1117 to 1522	1533	10.1%	16.2%	
Bicycles	215	290	200	194	105	201	142 to 260	197	87.6%	-1.9%	
From Building	960	1036	943	978	836	951	885 to 1016	586	-29.9%	-38.4%	
From Coin-Op Machine	12	14	24	33	18	20	13 to 28	7	-61.1%	-65.3%	
All Other	594	612	653	597	604	612	591 to 633	626	3.6%	2.3%	

Current Activity Analysis Legend				
<b>Significant Increase</b>	<b>Moderate Increase</b>	<b>Normal Level</b>	<b>Moderate Decrease</b>	<b>Significant Decrease</b>

The "Current Activity Level Compared to Historical Activity Levels" field examines the statistical significance of the increase or decrease of the current year (2020) to the activity over the 5 year time period of 2015-2019 for each of the listed crime types. Please note that the "Current Activity Level Compared to Historical Activity Levels" does not examine the significance of any change between the current year (2020) and the previous year (2019).

## UCR Summary Part 1 Crimes



## Scottsdale Police Department - Uniform Crime Report (UCR)

### Annual Comparison for the City of Scottsdale

Part 1 Crimes	2006	2007	2008	2009	2010	2011	2012	2013	2014	2015	2016	2017	2018	2019	2020
Homicide	5	5	5	10	4	4	3	4	2	8	4	5	7	3	7
Forcible Rape	65	41	28	20	30	34	42	37	86	106	90	103	122	136	109
Robbery	153	143	130	129	100	125	115	101	81	100	112	100	87	110	97
Agg. Assault	282	249	260	252	216	237	169	195	193	222	163	188	206	166	257
Burglary	1,721	1,523	1,488	1,337	1,281	1,424	1,255	1,093	970	829	768	878	711	662	683
Theft	5,476	5,863	5,897	5,155	5,014	5,054	4,551	4,465	4,111	4,311	4,681	4,346	4,700	4,173	3,963
Auto Theft	1,118	752	518	306	268	246	241	208	220	192	249	246	272	264	299
Arson	51	31	31	31	12	25	27	15	9	10	13	23	17	15	21
<b>Totals:</b>	<b>8,871</b>	<b>8,607</b>	<b>8,357</b>	<b>7,240</b>	<b>6,925</b>	<b>7,149</b>	<b>6,403</b>	<b>6,118</b>	<b>5,672</b>	<b>5,778</b>	<b>6,080</b>	<b>5,889</b>	<b>6,122</b>	<b>5,529</b>	<b>5,436</b>
<b>Population</b>	<b>238,900</b>	<b>241,750</b>	<b>243,390</b>	<b>244,710</b>	<b>217,385</b>	<b>217,965</b>	<b>219,713</b>	<b>219,713</b>	<b>222,213</b>	<b>225,698</b>	<b>231,200</b>	<b>237,969</b>	<b>242,540</b>	<b>245,417</b>	<b>247,944</b>
<b>Index Per 1,000</b>	<b>37.1</b>	<b>35.6</b>	<b>34.3</b>	<b>29.6</b>	<b>31.9</b>	<b>32.8</b>	<b>29.1</b>	<b>27.8</b>	<b>25.5</b>	<b>25.6</b>	<b>26.3</b>	<b>24.7</b>	<b>25.2</b>	<b>22.5</b>	<b>21.9</b>

Census Year

### CLEARANCE RATES

Part 1 Crimes	2006	2007	2008	2009	2010	2011	2012	2013	2014	2015	2016	2017	2018	2019	2020
Homicide	100%	100%	140%	90%	100%	100%	100%	100%	50%	100%	100%	60%	143%	100%	100%
Forcible Rape	40%	85%	79%	105%	93%	47%	48%	84%	23%	16%	27%	12%	16%	15%	21%
Robbery	33%	36%	42%	48%	42%	42%	26%	39%	56%	57%	41%	42%	40%	31%	33%
Agg. Assault	58%	67%	77%	73%	76%	65%	76%	67%	66%	65%	70%	63%	64%	60%	72%
Burglary	9%	9%	10%	13%	11%	19%	13%	14%	13%	21%	19%	18%	24%	17%	21%
Theft	14%	15%	17%	19%	20%	20%	23%	25%	31%	32%	28%	21%	26%	23%	22%
Auto Theft	14%	19%	17%	22%	26%	20%	21%	25%	22%	26%	25%	29%	24%	17%	22%
Arson	10%	6%	17%	32%	8%	28%	33%	20%	67%	30%	62%	22%	18%	20%	33%

% of cases cleared by arrest or exceptional means.

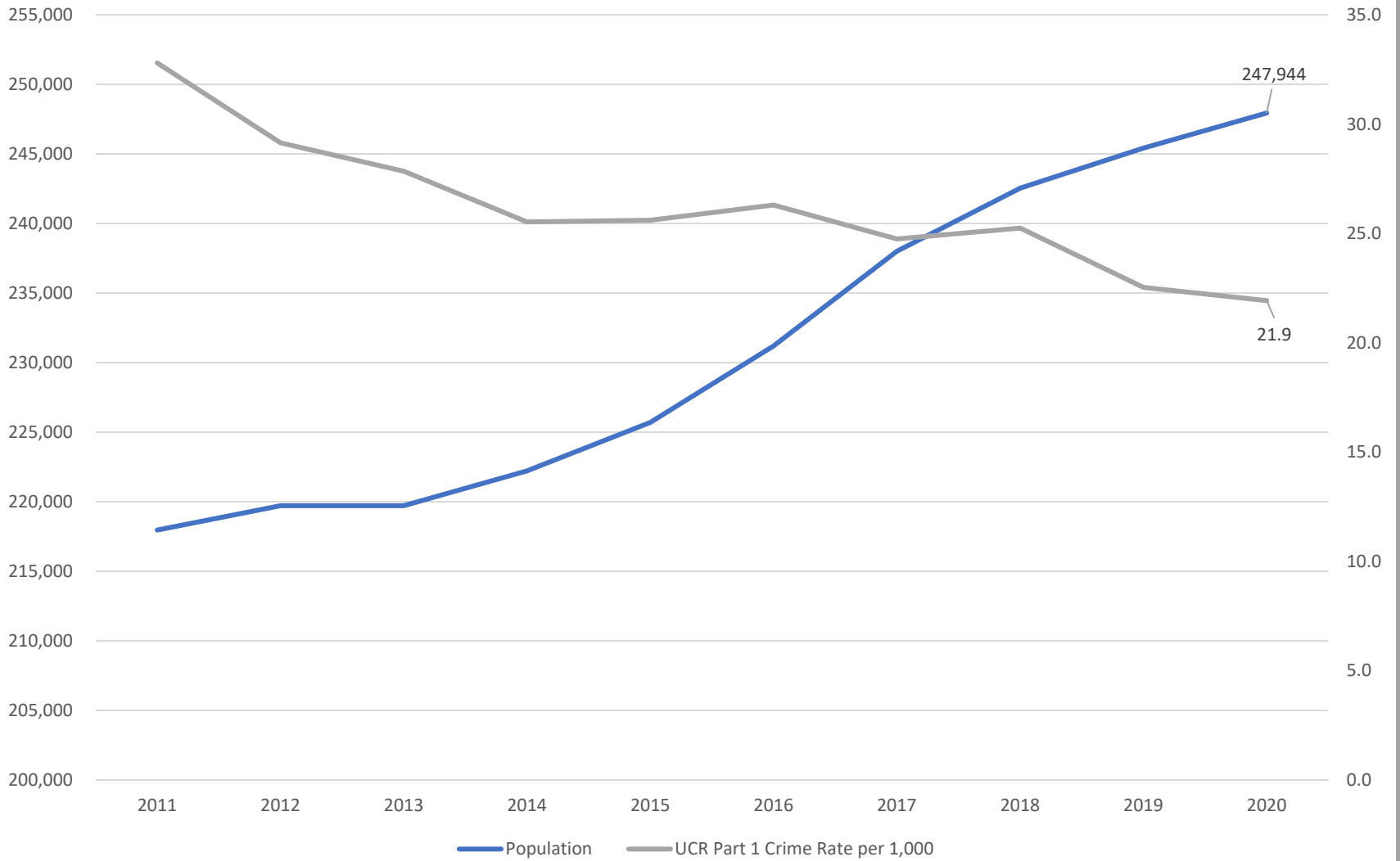
**2020 Total Persons  
Crimes Cleared**

**52%**

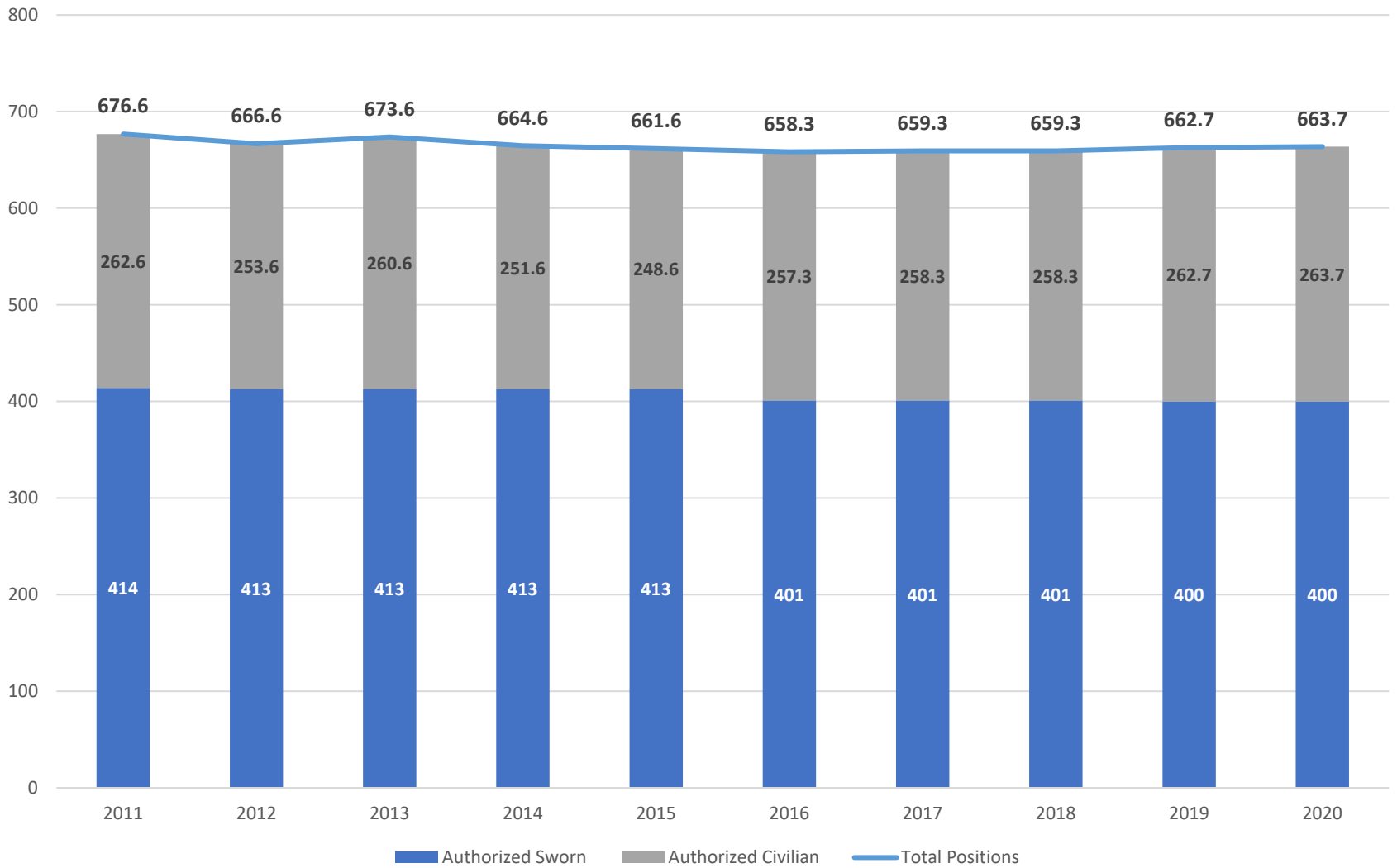
**2020 Total Property Crimes  
Cleared**

**22%**

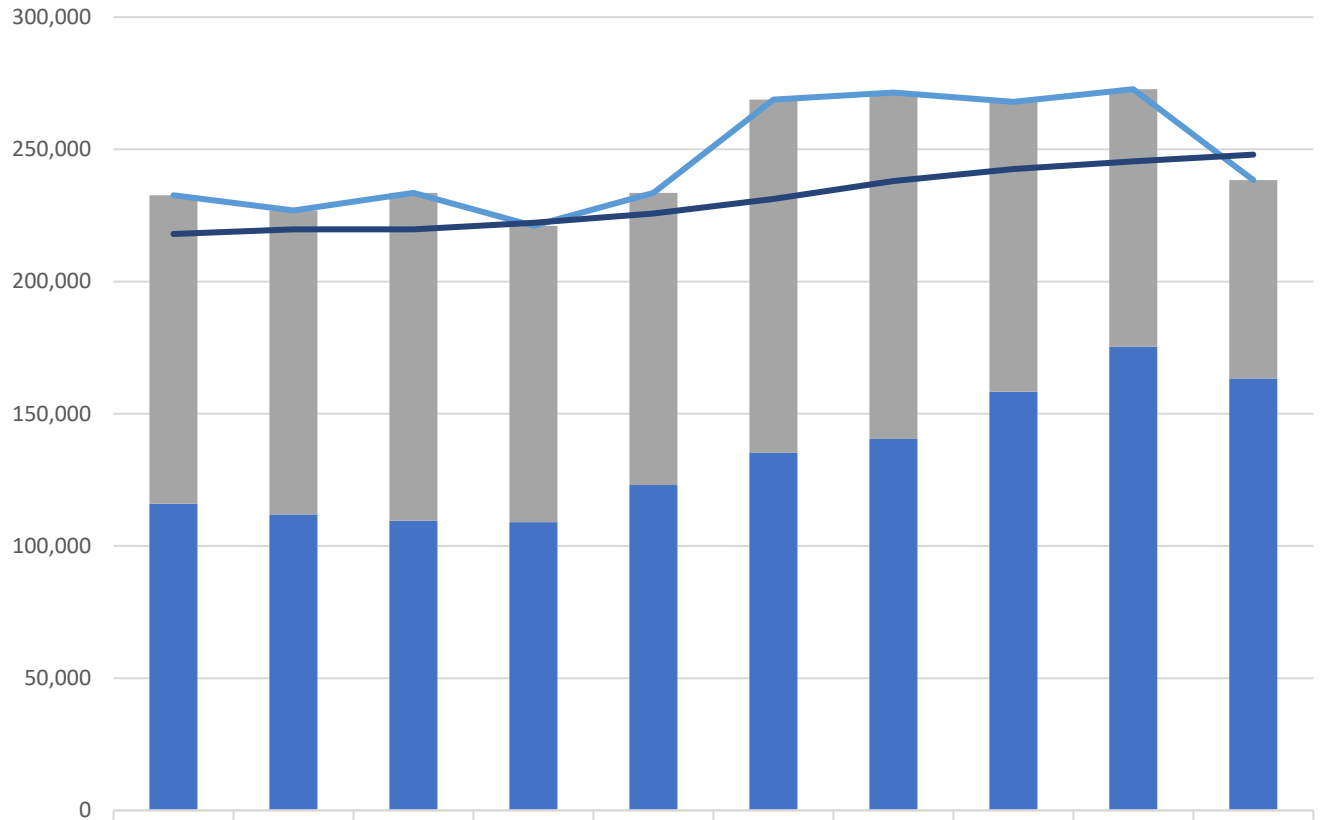
# CRIME RATE AND POPULATION



# AUTHORIZED EMPLOYEES



# CALLS FOR SERVICE

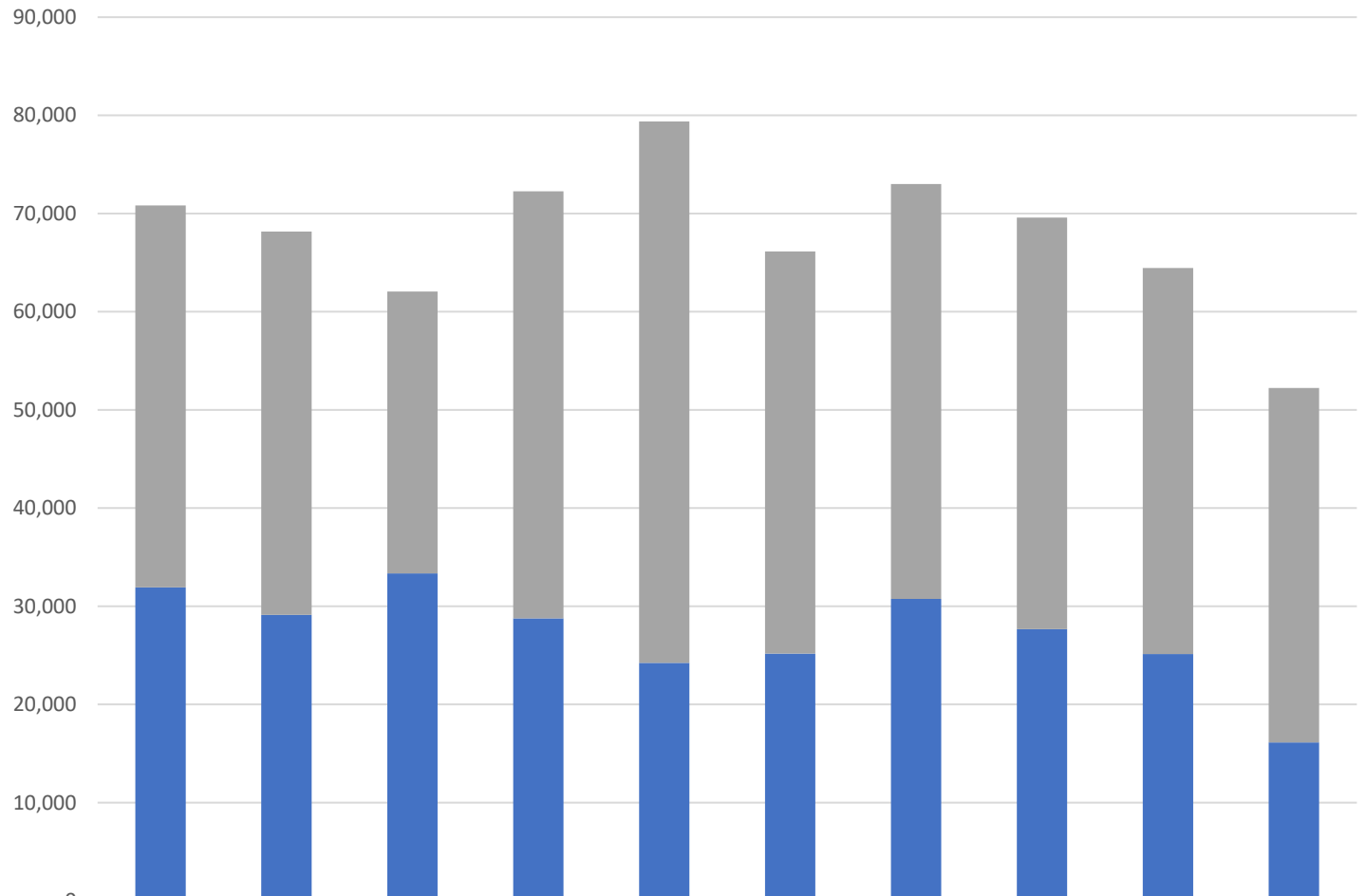


	2011	2012	2013	2014	2015	2016	2017	2018	2019	2020
Calls for Service (Officer Initiated)	116,597	114,921	123,963	112,049	110,454	133,550	130,955	109,615	97,317	75,023
Calls for Service (Citizen Generated)	115,996	111,911	109,571	109,020	123,077	135,217	140,483	158,308	175,379	163,326
Calls for Service (All)	232,593	226,832	233,534	221,069	233,531	268,767	271,438	267,923	272,696	238,349
Population	217,965	219,713	219,713	222,217	225,698	231,200	238,000	242,540	245,417	247,944

■ Calls for Service (Citizen Generated)
 ■ Calls for Service (Officer Initiated)
 — Calls for Service (All)
 — Population

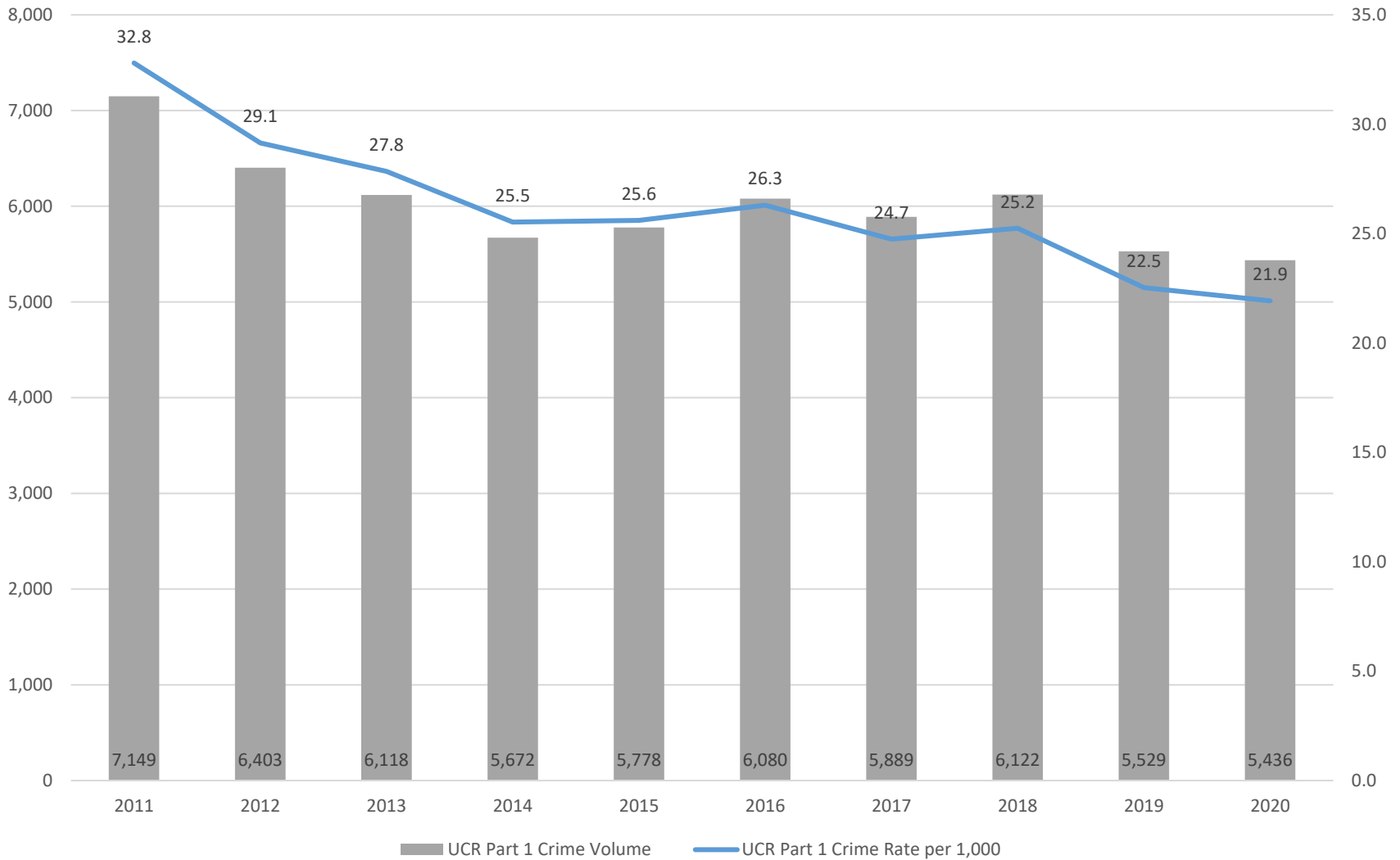


# CITATIONS

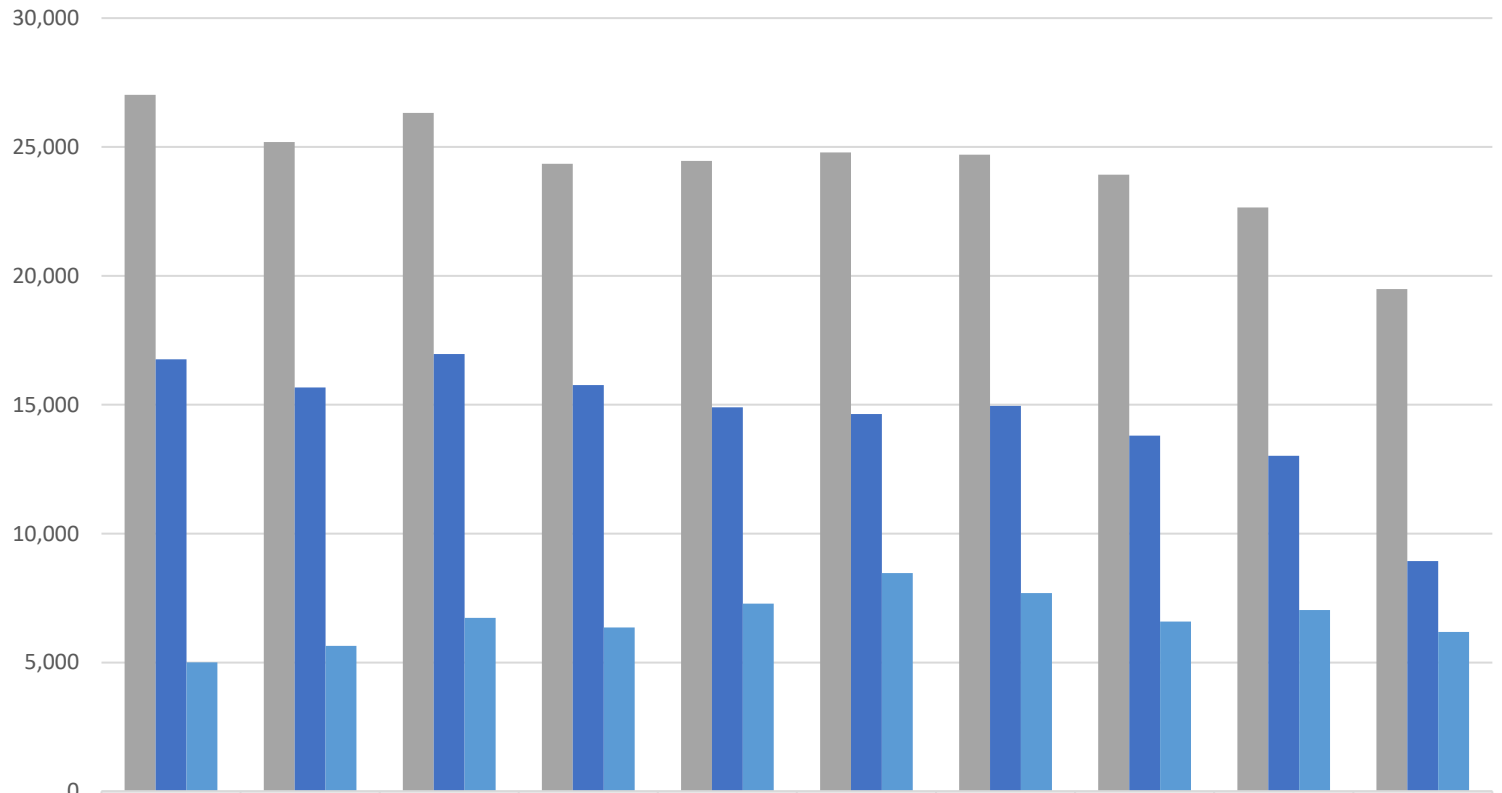


	2011	2012	2013	2014	2015	2016	2017	2018	2019	2020
Photo Enforcement Citations	38,904	39,027	28,712	43,498	55,154	40,955	42,265	41,923	39,326	36,103
Citations	31,918	29,128	33,339	28,760	24,228	25,175	30,739	27,663	25,126	16,128

# CRIME VOLUME AND RATE



## REPORTS, ARRESTS, AND CONTACTS



	2011	2012	2013	2014	2015	2016	2017	2018	2019	2020
■ Departmental Reports	27,024	25,188	26,318	24,345	24,456	24,786	24,699	23,924	22,655	19,486
■ Arrests	16,765	15,672	16,968	15,766	14,902	14,641	14,957	13,804	13,021	8,938
■ Field Contact Cards	5,009	5,647	6,733	6,361	7,287	8,474	7,693	6,589	7,035	6,189

■ Departmental Reports   ■ Arrests   ■ Field Contact Cards

## AVERAGE EMERGENCY RESPONSE TIME (IN MINUTES:SECONDS)



# Disclaimers

- All information provided is in Calendar Year
- Population figures are obtained via <https://population.az.gov/>
- All positions are authorized positions from the fiscal year budget that begins mid-calendar year of each specific year (example: 2016 is FY16/17 Adopted)
- All Statistics are from the Scottsdale Police Department Records Management System as of February 2, 2021.
  - Photo Enforcement Citations provided by ATS include red light, left turn, speeding and school zone violations.
- UCR statistics are what the department reports to Arizona Department of Public Safety and the Federal Bureau of Investigations. All official UCR information should be attained from the FBI.
  - UCR Crime Rate uses population from this document and Official FBI UCR figures and will vary from the FBI UCR Crime Rate due to differing population
- Emergency Response Times are calculated from “start” to “arrive,” or “hello” to “hello” and only include Priority 1 citizen-generated calls for service

