



# Pima Road

Public Meeting

March 06, 2025

# Tonight's Meeting

## Introduction

Erin Walsh – City of Scottsdale Public Works Public Information Officer

## Project Overview

Nathan Domme – City of Scottsdale Transportation Planning Manager

## Preliminary Design

David Rutkowski – Kimley-Horn

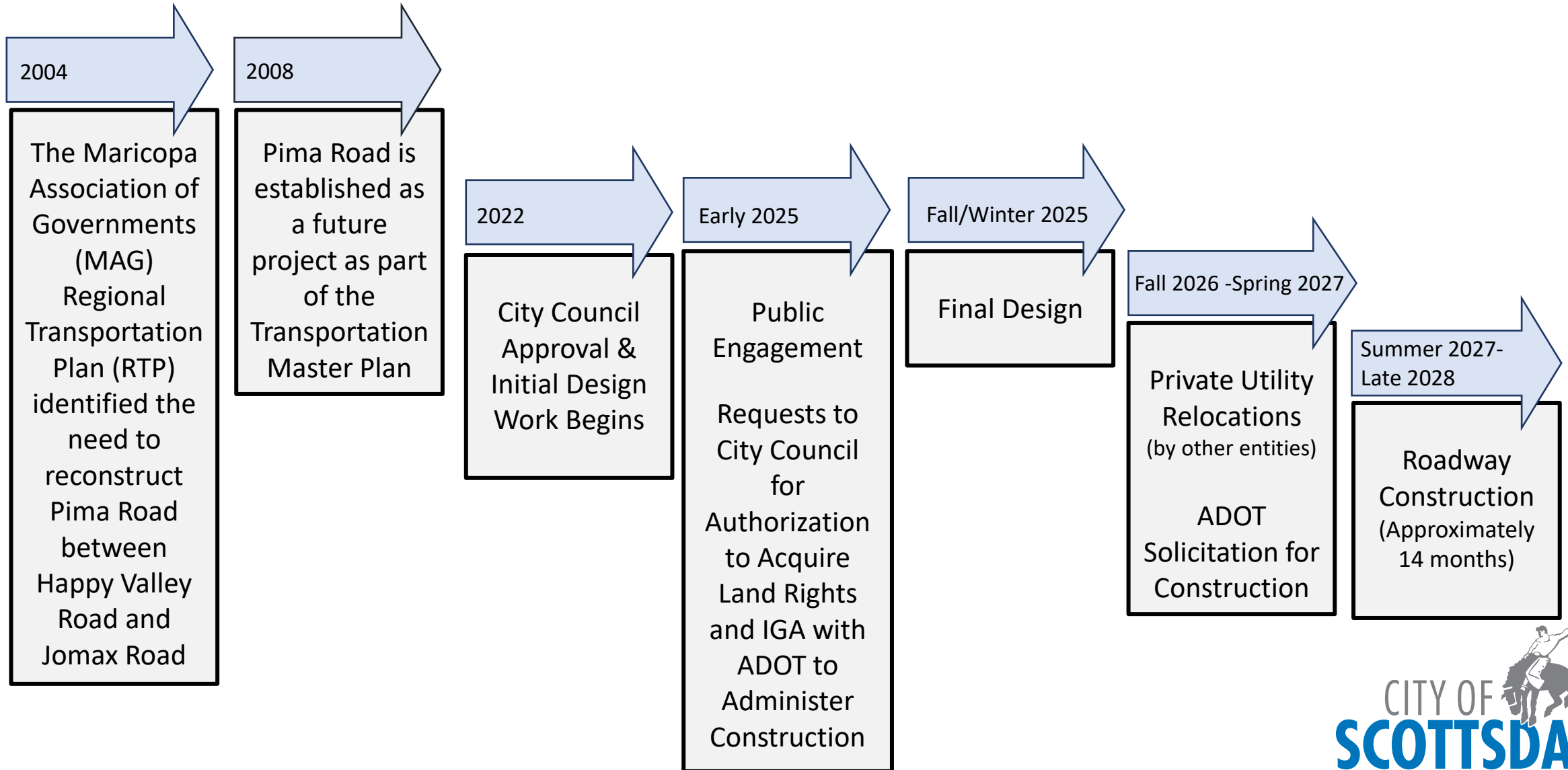
## Next Steps, Questions & Answers

Erin Walsh – City of Scottsdale Public Works Public Information Officer



# Where are we in the process?

\*Tentative Project Schedule



# Project Information

## Project Description

This project will design and construct improvements to Pima Road, from Happy Valley Road to Jomax Road, to improve intersection functionality and stormwater conveyance.

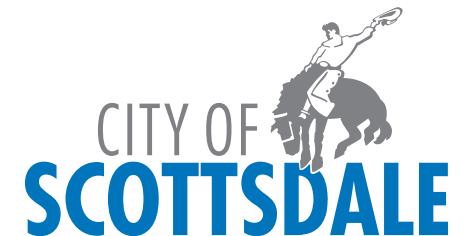
Pima Road's existing number of lanes (two lanes in each direction) will remain but additional turning lanes at intersections will be added.

The roadway will be improved to include:

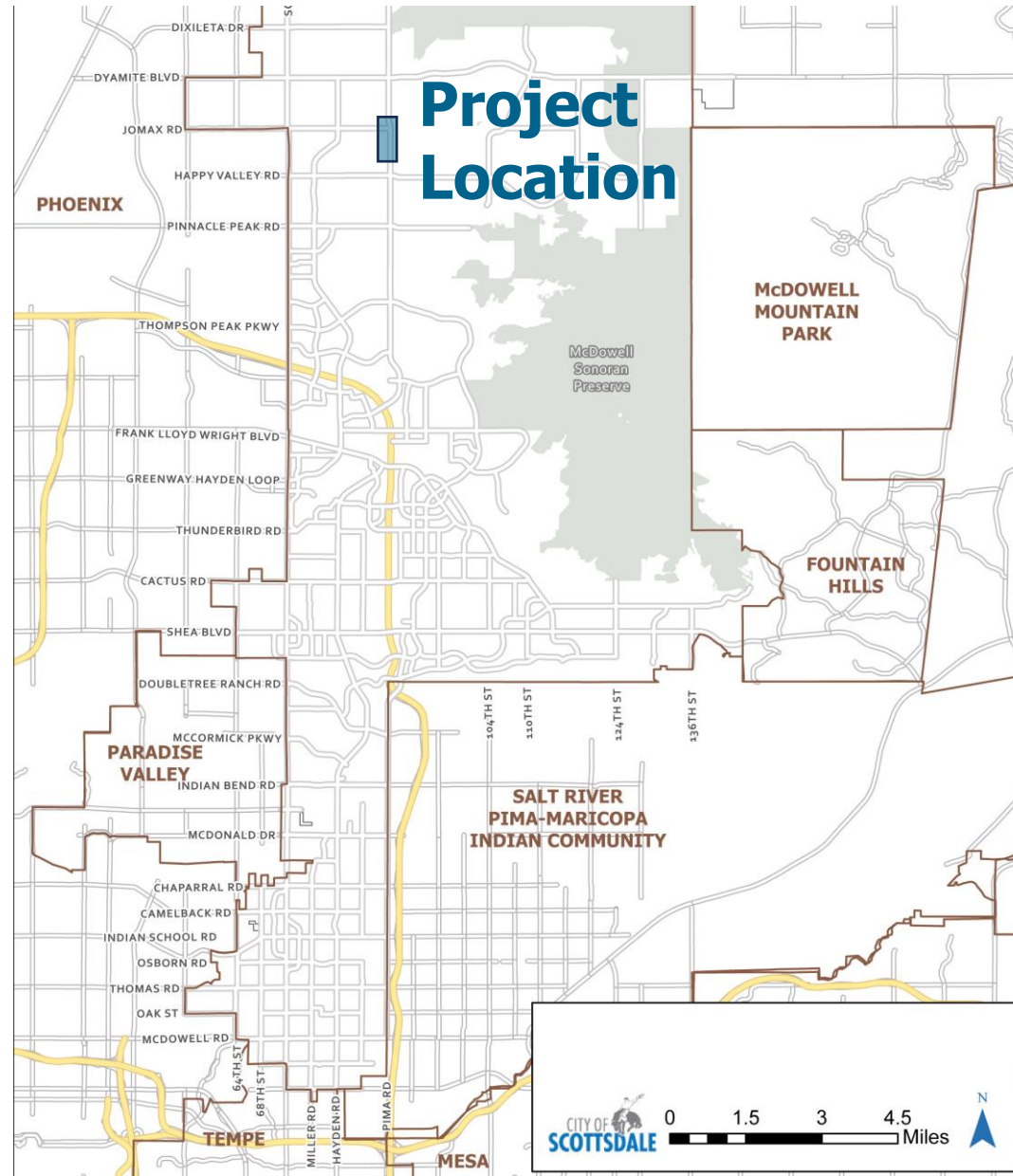
- landscaped raised median island
- bike lanes
- concrete sidewalk
- shared-use path
- unpaved trail
- curb and gutter
- stormwater improvements
- utility relocations

## Project Funding

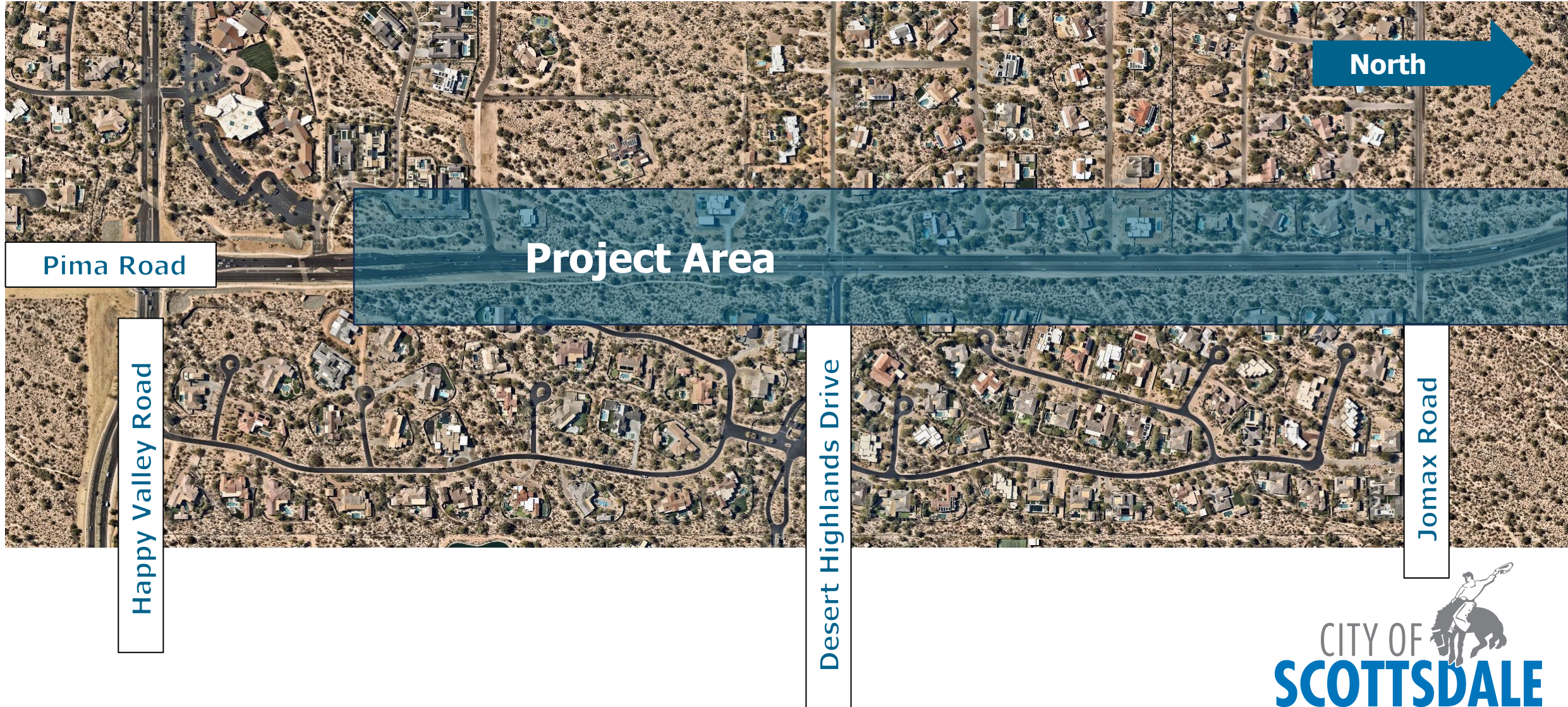
City of Scottsdale 2019 Transportation 0.1% Sales Tax  
Federal Funding – Surface Transportation Block Grant



# Pima Road Project Location



# Pima Road Project Area



# Project Background and Need

## Urban Road of Regional Significance

Pima Road is designated as an Urban Road of Regional Significance that will help ensure regional mobility

## Scenic corridor

Pima Road serves as a Scenic corridor for the City of Scottsdale, the project looks to minimize adverse impacts and preserve the corridor's environment

## Improved Design

As a minor arterial, Pima Road is Intended to have improved features



# Transportation Action Plan & Project History

## 2016

Classified as a Major Arterial (six lanes with raised medians) in the 2016 Transportation Master Plan Rural Street Classification Map.

## 2018

Reclassified as a Minor Arterial (four lanes with raised medians) through detailed City of Scottsdale master planning and updated traffic data analysis.

## 2022

Project design began and was regionally funded for the later part of the Arterial Life Cycle Program (ALCP)

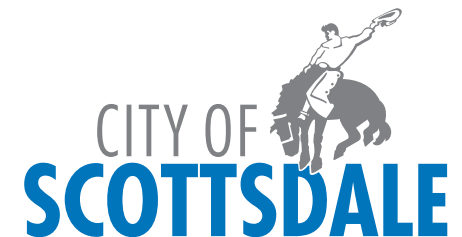
## 2023 - 2024

30%-60% design development

## Transportation Action Plan (2022) Street Element

Project aligns with the goals of the Transportation Action Plan Street Element

- Complete Streets Policy
- Noise Mitigation Analysis Policy





# Project Features in development

## Designed in Accordance with City Design Standards and Policies Manual

Cross-sections vary to fit surrounding topography

Designed for the posted speed limit of 45 mph

## Raised Landscaped Median

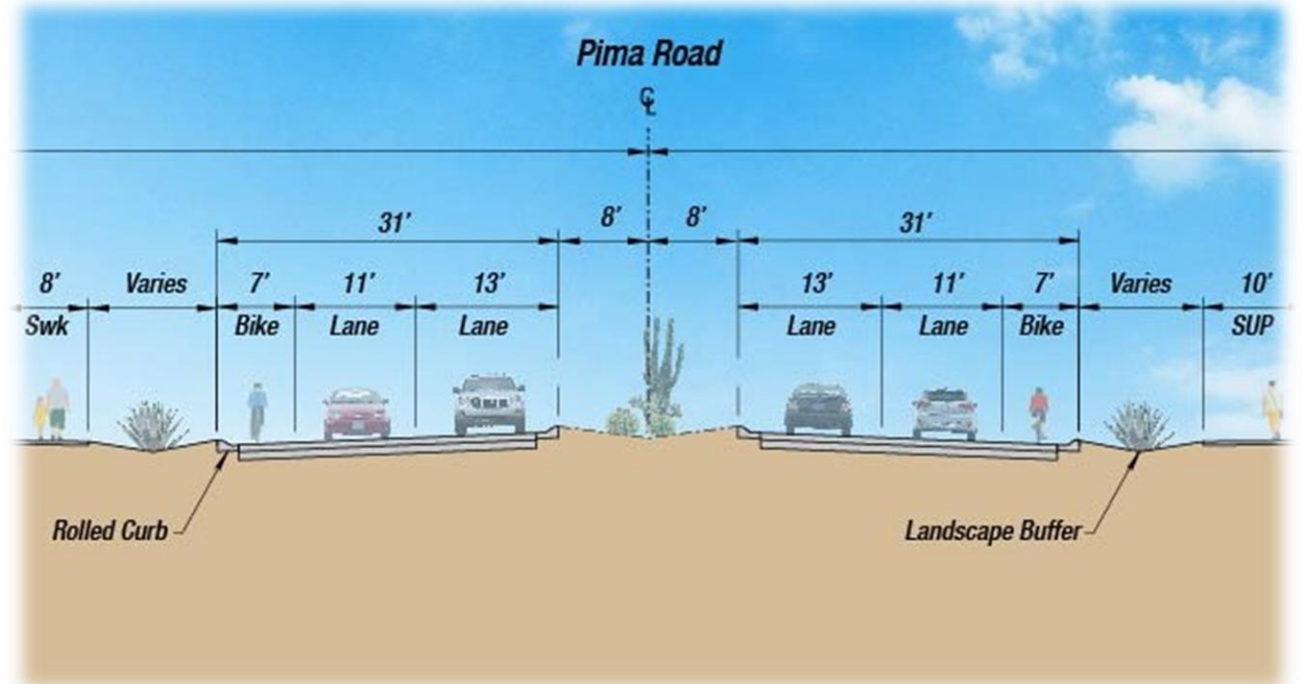
Raised Median to separate traffic moving in different directions

## Four travel lanes

Restores existing capacity

## Bike Lanes on both sides

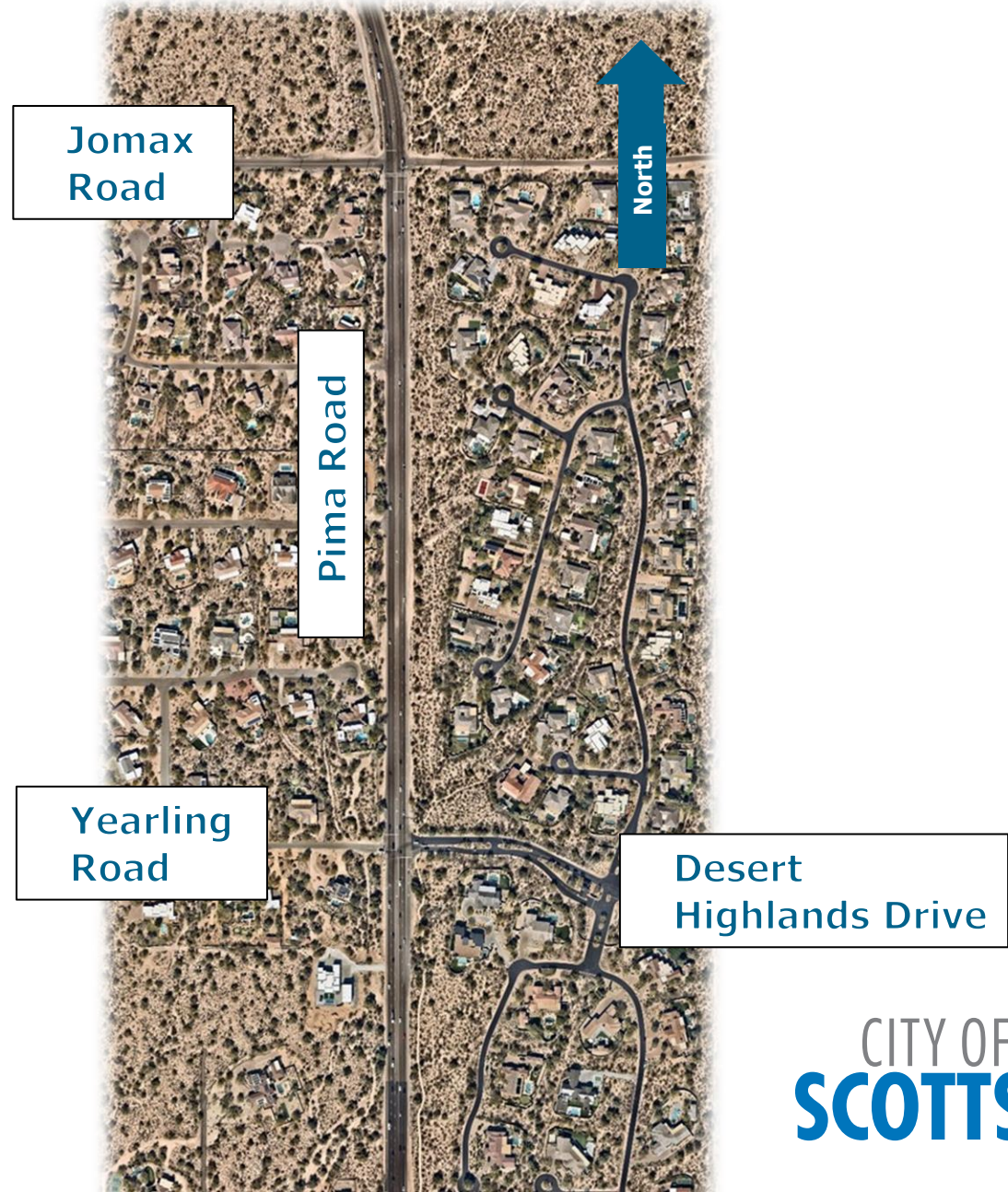
Improve multimodal travel along the corridor



# Pima Road: Project Status

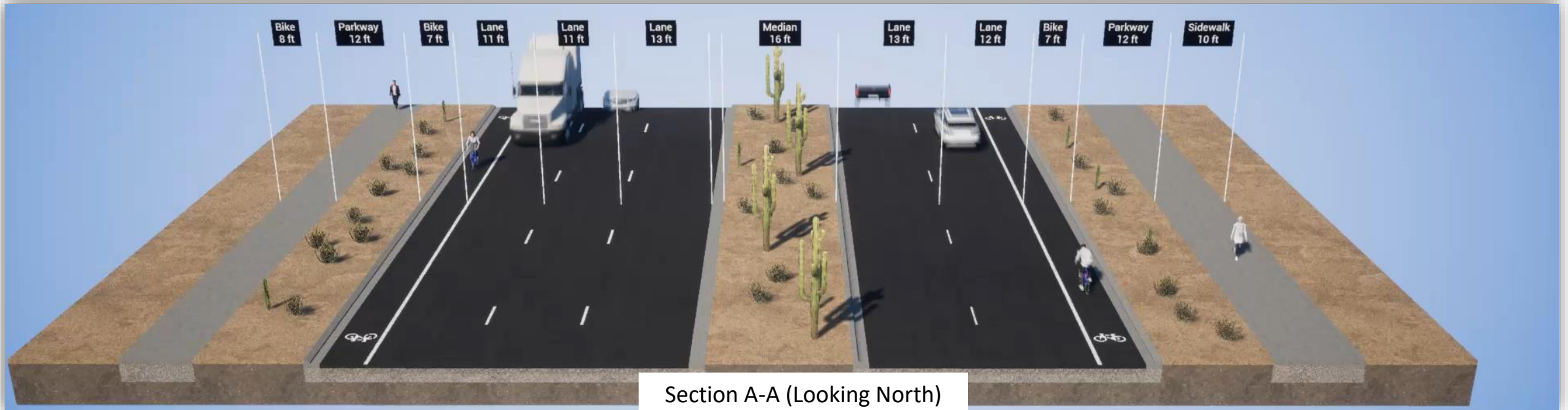
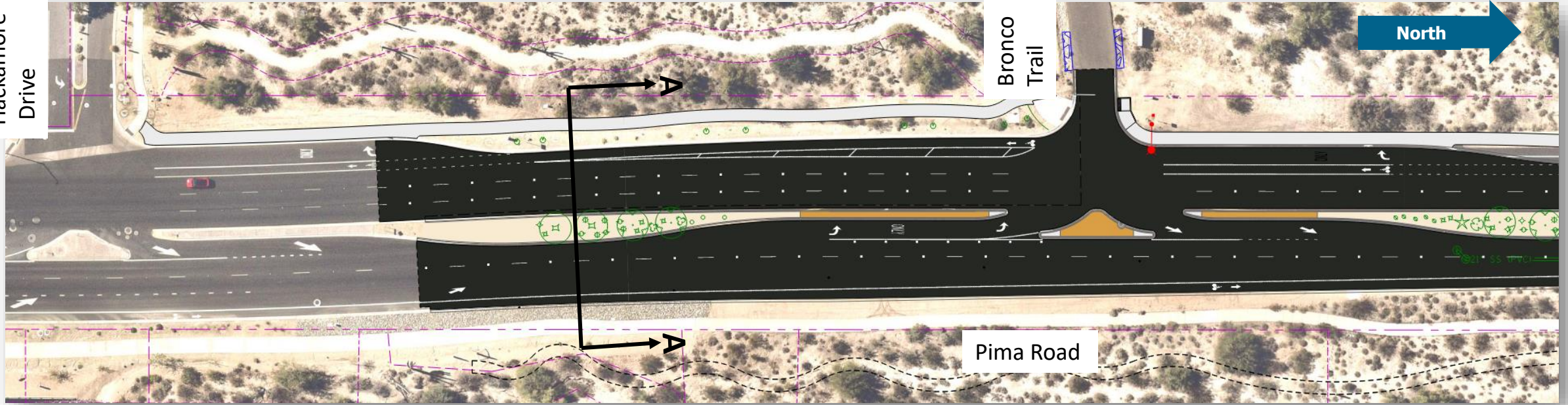
## Project Design Documents

- **Project Assessment**
  - Evaluation of Alternatives
  - Major Utility Impacts
  - Right of Way Acquisition
  - Development of Cost Estimate and Schedule
- **Traffic Analysis**
  - Evaluate Intersections, Lane Configurations and Turn Lane Storage
  - Traffic Signal Warrant Analysis at Jomax Road (2022, 2025 and 2045)
  - Crash Analysis (2019-2021)
- **Preliminary Design**
  - Horizontal and Vertical Geometry
- **Native Plant Survey**
  - White = Salvage
  - Blue = Non-Salvageable



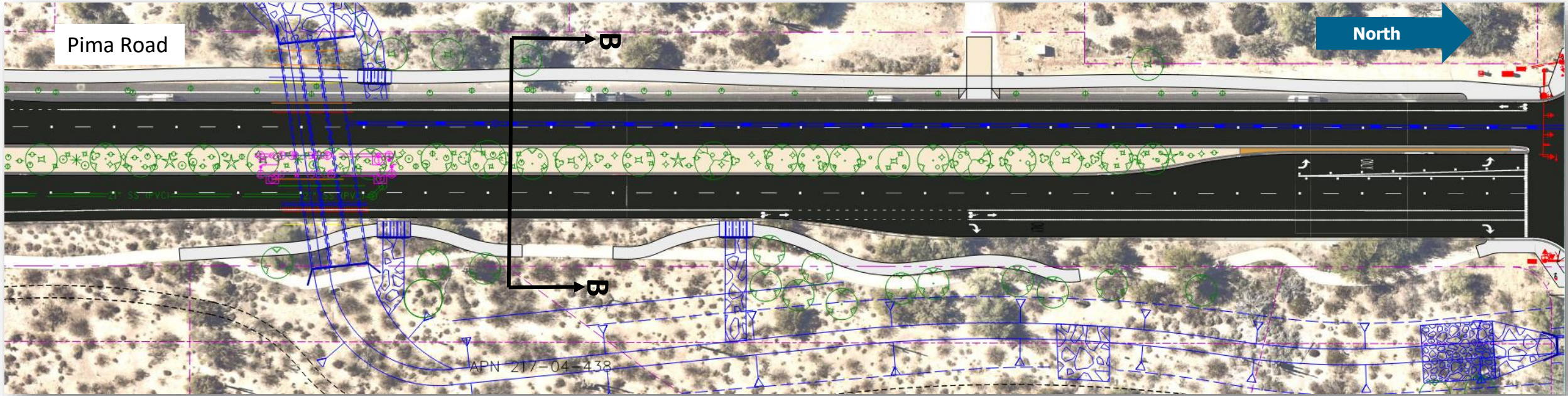
# Pima Road: Happy Valley Road to Jomax Road

Hackamore Drive



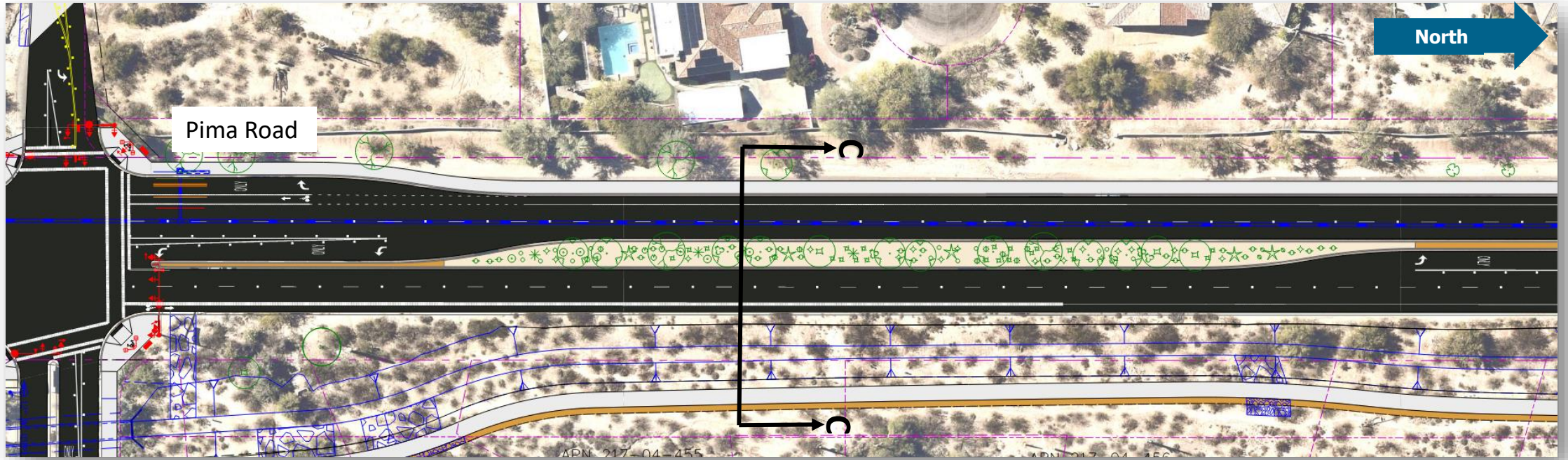
Section A-A (Looking North)

# Pima Road: Happy Valley Road to Jomax Road



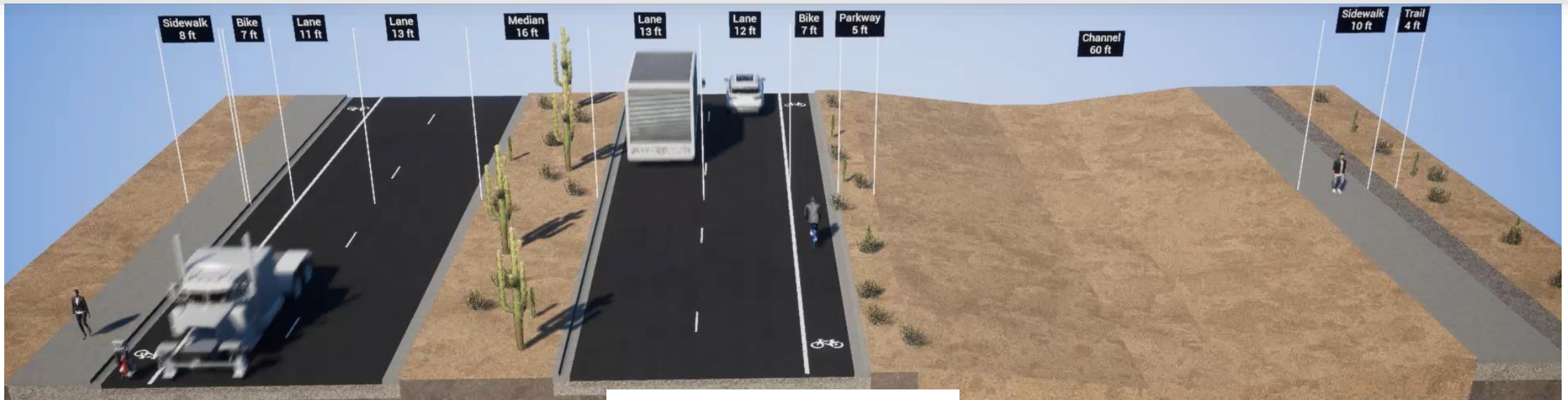
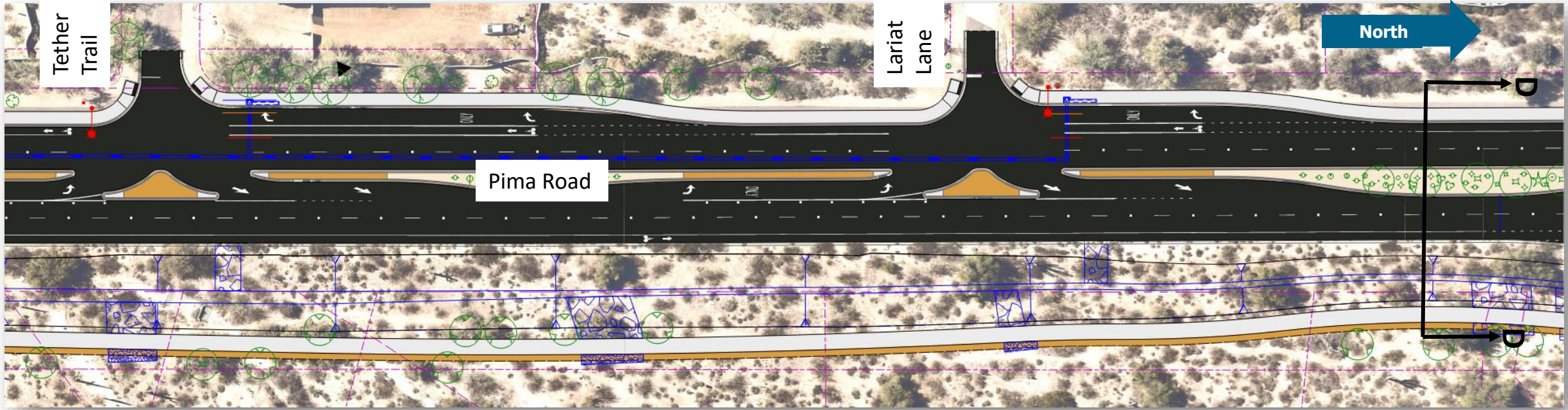
# Pima Road: Happy Valley Road to Jomax Road

Desert Highlands Drive/ Yearling Rd



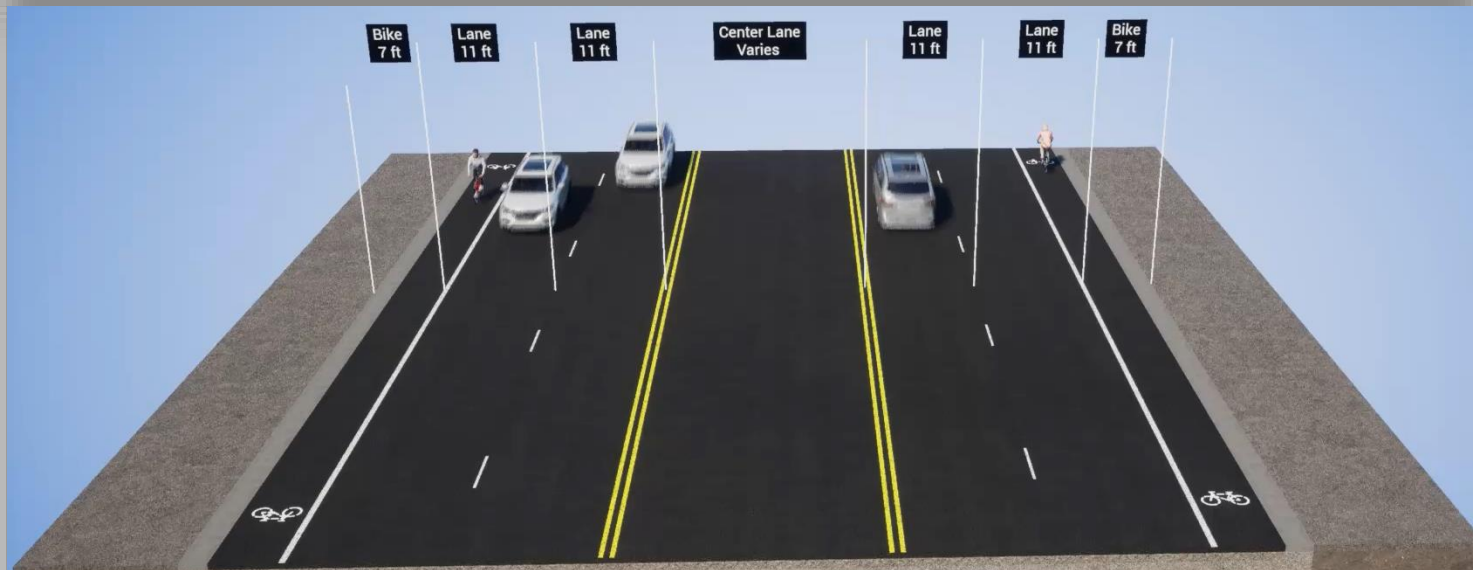
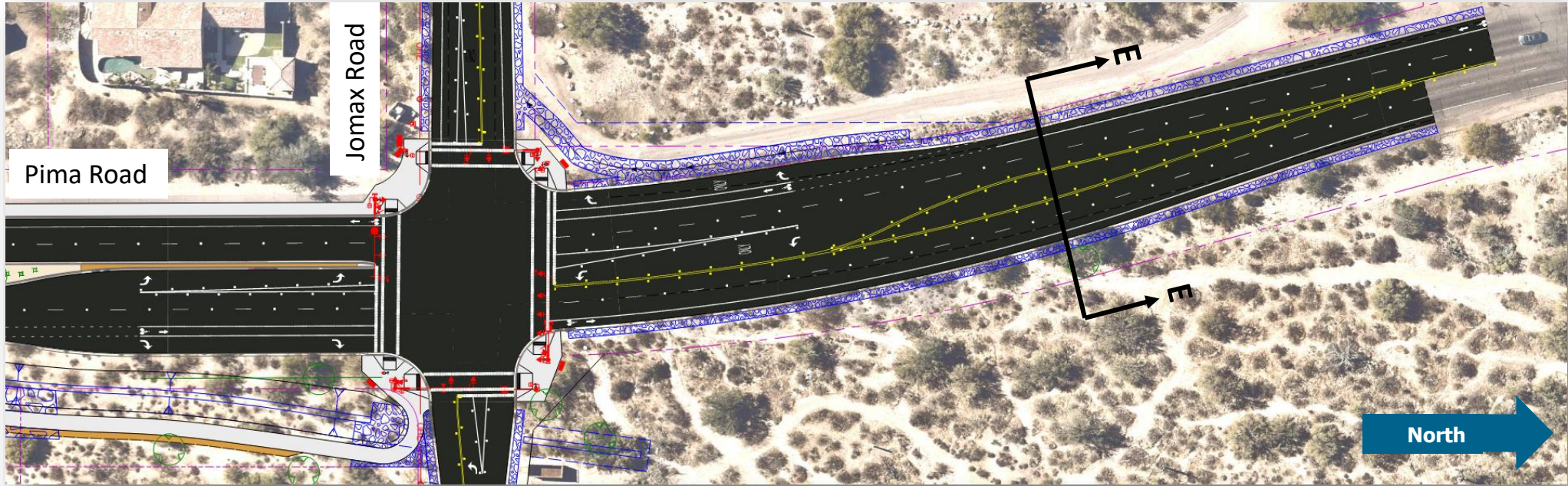
Section C-C (Looking North)

# Pima Road: Happy Valley Road to Jomax Road



Section D-D (Looking North)

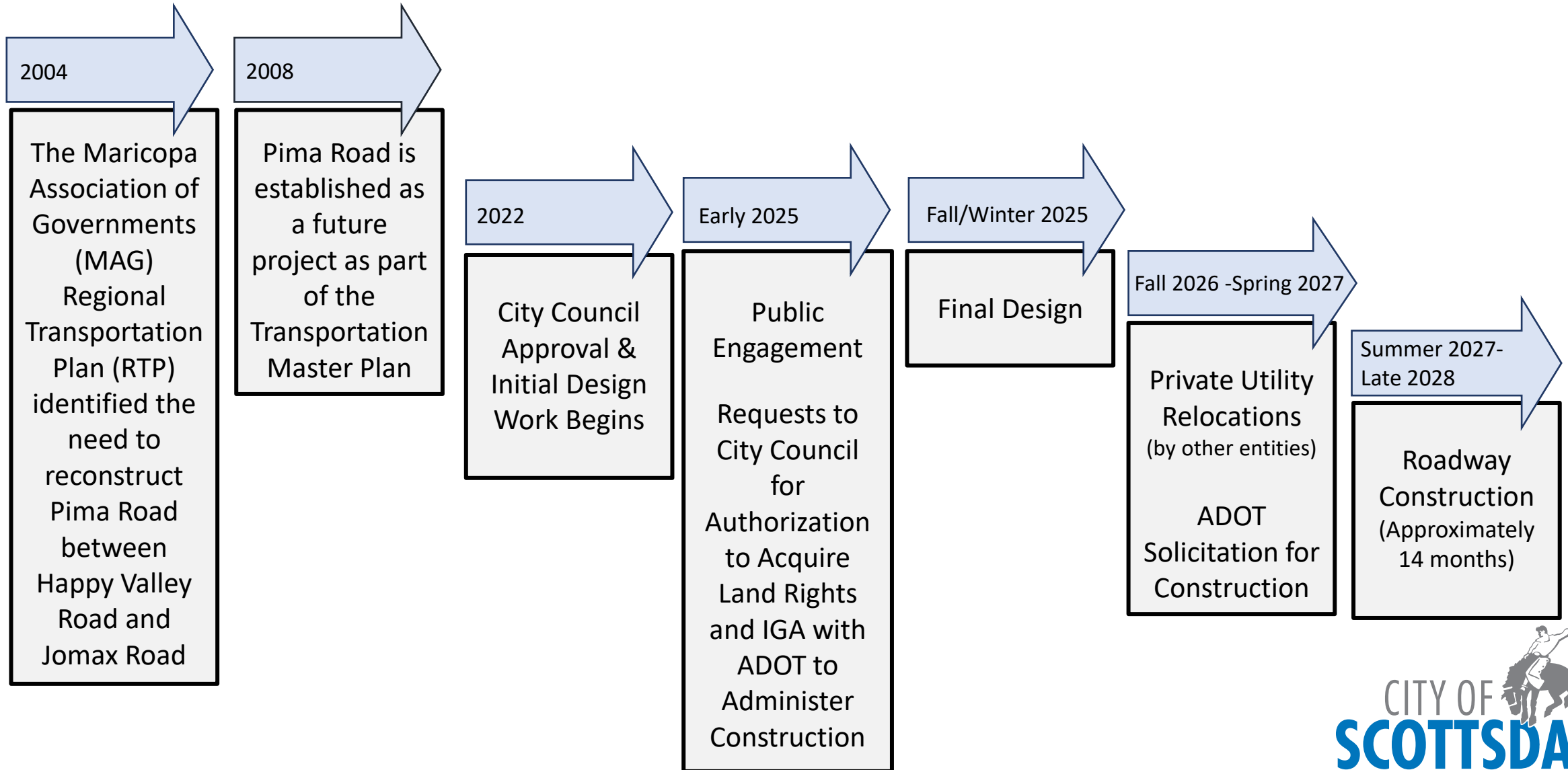
# Pima Road: Happy Valley Road to Jomax Road



Section E-E (Looking North)

# Where are we in the process?

\*Tentative Project Schedule





# Questions?

Please turn in your comment card before you leave tonight.

This presentation and a comment card are also available on the project website.

For additional information please visit [ScottsdaleAZ.gov](http://ScottsdaleAZ.gov), search “Pima Road”

