

# Thompson Peak Dog Park

Public Meeting

April 24, 2023

# Project Information

## Project Funding

Bond 2019: Question 1, Project 42

Add a Dog Park to Thompson Peak Park

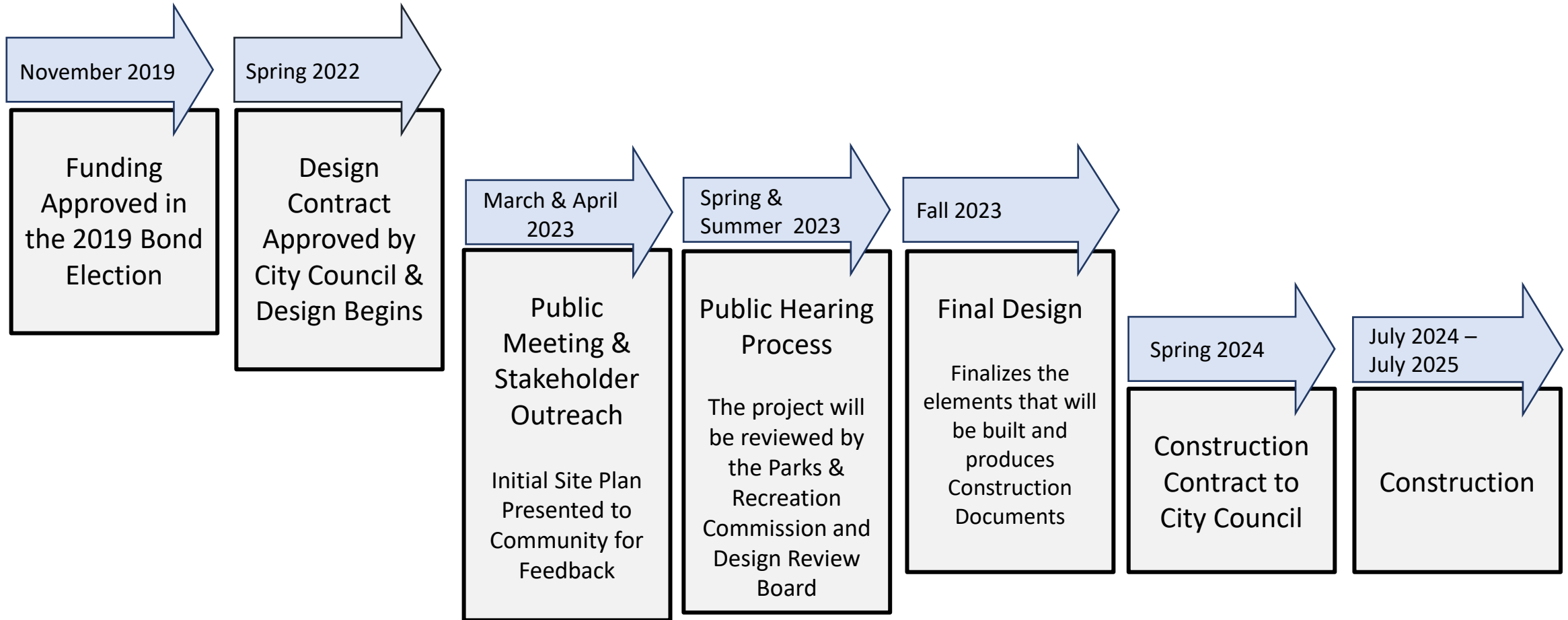
## Project Budget

\$4.6 Million

## Project Description

Build a three-and-a-half acre Dog Park consisting of three fenced and gated areas, a footbridge connecting the new space to existing amenities and an additional parking area with space for 100 cars at Thompson Peak Park.

# Where are we in the process?



# Scottsdale Dog Parks

## Chaparral Dog Park

- Scottsdale's most popular dog park includes 3-acres of grass, benches, play features and water fountains.
- Two areas will be open the majority of the time with one area designated for active dogs and another for passive dogs.
- The third area (on rotation) will be closed for maintenance and turf repair.

## Horizon Dog Park

- This small dog park is located in a retention basin on the far west end of Horizon Park. It has a large shade structure, a water fountain for you and your dog, and a water feature to control the dust. This area of the park is prone to flooding after a storm.

## Vista del Camino Park

- This half-acre dog park has plenty of shade trees, benches and water fountains for you and your dog to enjoy.

## Thompson Peak Dog Park

- Three-and-a-half acre dog park consisting of three fenced and gated areas

# Dog Park Rules

- Owners or custodians of a dog are responsible and legally liable for the acts and conduct of the dog at all times when the dog is in a city park.
- Dog behavior can be unpredictable particularly around other dogs and strangers.
- The city does not supervise use of the dog park and anyone using the area does so at his/her own risk.
- No more than two dogs per visitor.
- An adult must accompany youth under the age of 16.
- Bag and dispose of your pet's waste using canisters provided.
- Aggressive or anti-social behaving dogs must be removed from the park immediately.
- All dog attacks should be immediately reported to the Maricopa County Animal Care & Control
- Female dogs in heat are not permitted in the exercise area.
- All dogs must be currently licensed and vaccinated. Puppies under the age of four months are not allowed in the park until they have had their license and vaccinations.
- Dogs should be under voice control.
- Please fill any hole your dog digs.
- No food or alcoholic beverages allowed in the exercise area.
- Owners or custodians of a dog must restrain and control the dog at all times with a leash to external site of not more than 6 feet in length when outside of the dog exercise area. (Scottsdale Revised Code, Ch. 20, Sec. 20-32)

# Hours of Operation, Lights & Maintenance

## Operating Hours

Per Scottsdale Revised Code, public parks are open from sunrise to 10:30 p.m. daily

## Lighting

Activity and lighting will vary depending on the night and use, but the park will be “unprogrammed,” meaning the city of Scottsdale will not be reserving space or hosting events at the park.

## Park Maintenance

Maintenance will be performed on the dog park on a regular schedule, a minimum of two days a week

## Cell Rotation

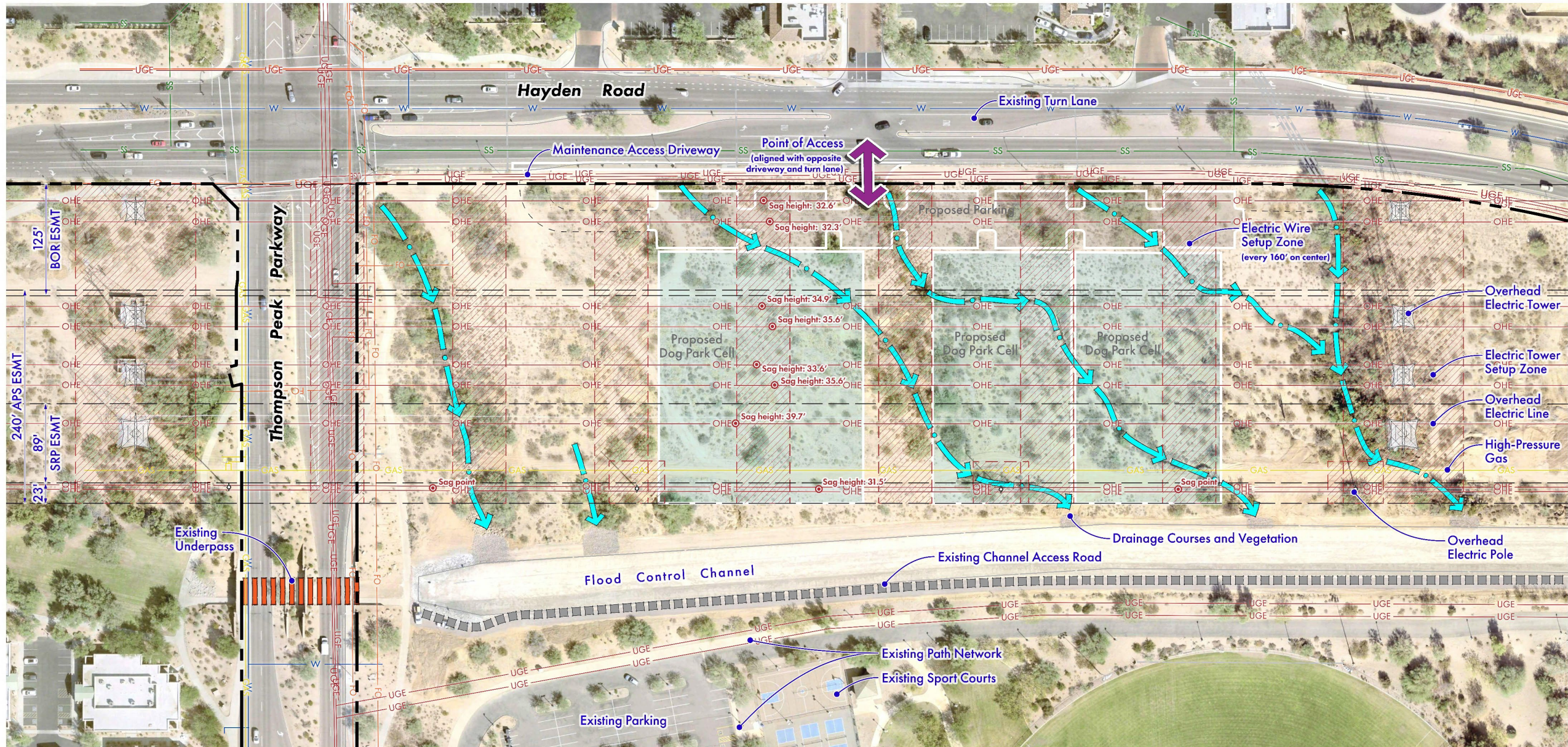
- Off-leash areas require a great deal of space and onsite staffing to be maintained correctly.
- As a reference, approximately 300,000 people visit the Chaparral Off Leash Area annually. That results in about 450,000 dogs, as many visitors bring more than one furry friend to the space.
- Typically, off leash areas include several areas, called cells, that are rotated so grass can rest and be properly maintained.
- Without the right maintenance and allocation of space, off leash areas turn into areas of dirt and mud from continuous daily use.

## Surface Treatment

Scottsdale is beginning to use surfaces other than grass in off leash areas.

- Allows less down time
- Saves water
- Cost less to build and maintain
- Doesn't require as much space

# Site Conditions





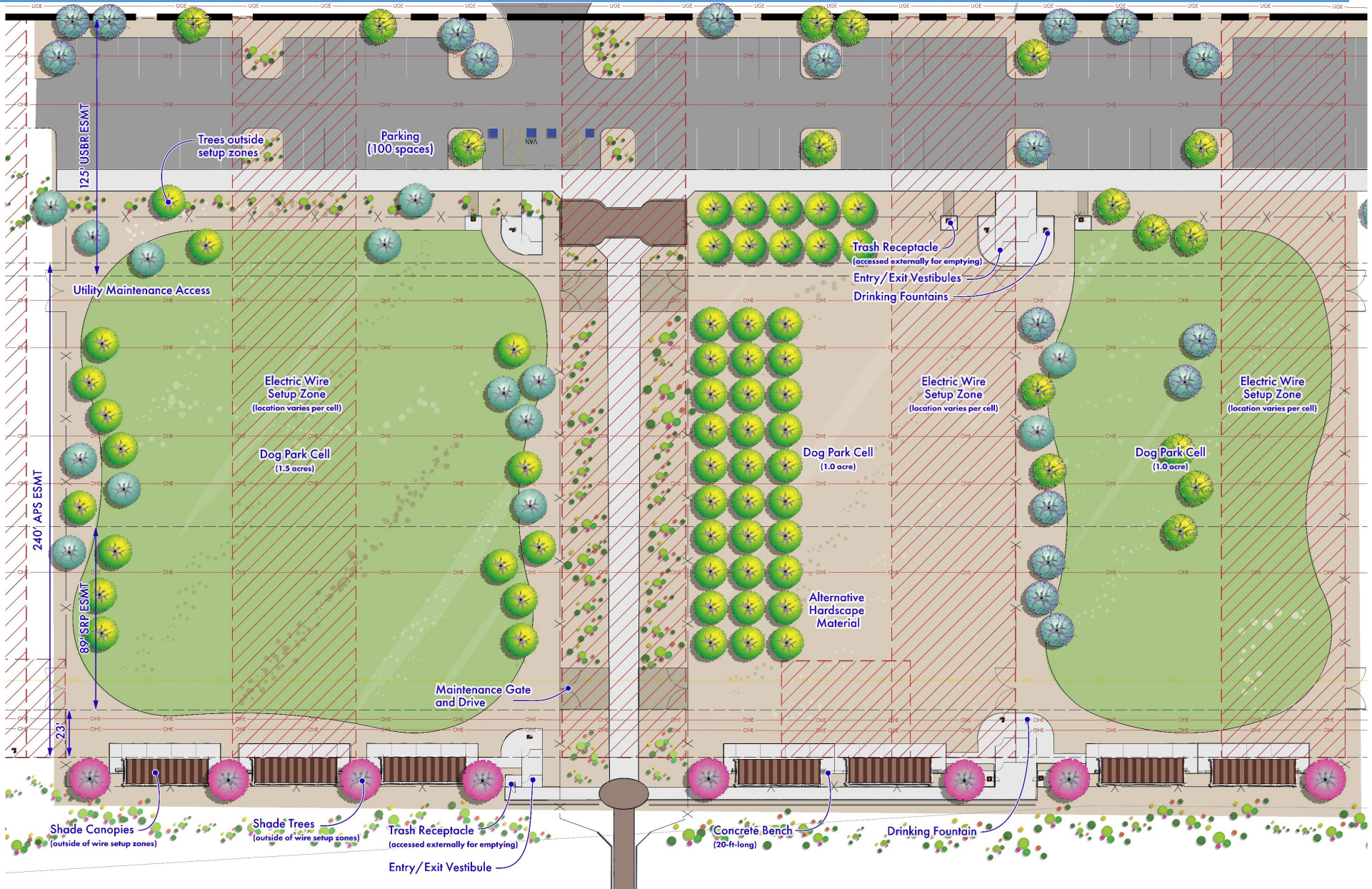
# Conceptual Site Plan



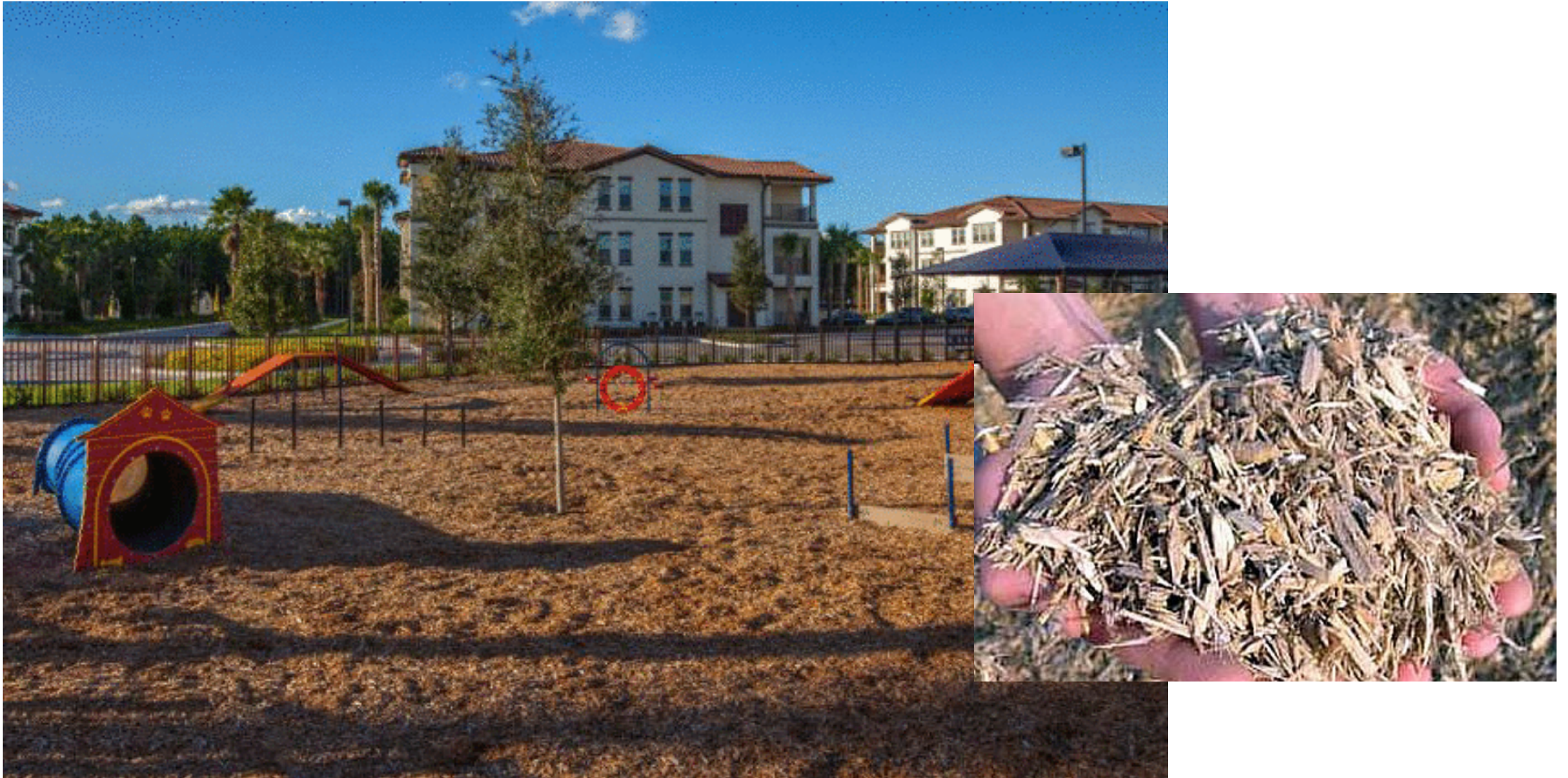
# Dog Cell Enlargement



# Dog Cell Enlargement with Utility Company Set-up Zones



## Surfacing Option - Engineered Wood Fiber



## Surfacing Option - Decomposed Granite



## Surfacing Option - Natural Grass



# Site Amenities Options



Drinking Fountain  
Most Dependable Fountain  
440 SM w/ Pet Fountain  
Textured Emerald



Trash Receptacle  
Wabash Valley - Classic Collection  
32 Gallon, Slat Pattern  
Green



Pet Waste Dispenser  
Mutt Mitt  
Mini Dispenser Station  
Green



Cast-In-Place Seat Wall



Shade Canopy  
Classic Recreation Systems Inc.  
Marana  
Frame Color: RAL 6000 (Patina Green)



Park Monument Sign  
Painted Metal

Area Light Fixture  
Brand TBD

# Site Amenities Options



Drinking Fountain  
Most Dependable Fountain  
440 SM w/ Pet Fountain  
Burgandy



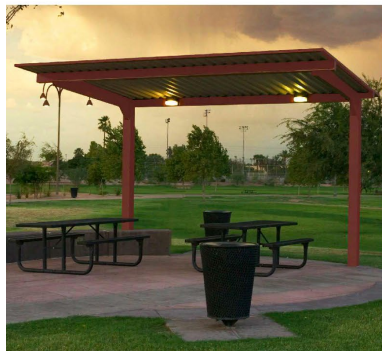
Trash Receptacle  
Wabash Valley - Classic Collection  
32 Gallon, Rib Pattern  
Brown



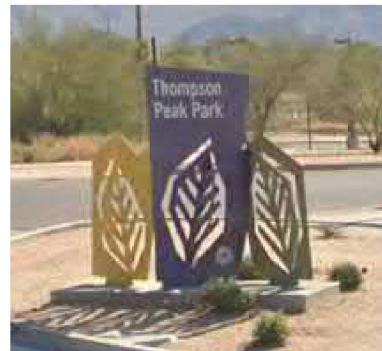
Pet Waste Dispenser  
Mutt Mitt  
Mini Dispenser Station  
White



Concrete Bench  
Archiproducts  
Gravity Bench



Shade Canopy  
Classic Recreation Systems Inc.  
Marana  
Frame Color: RAL 3009 (Oxide Red)

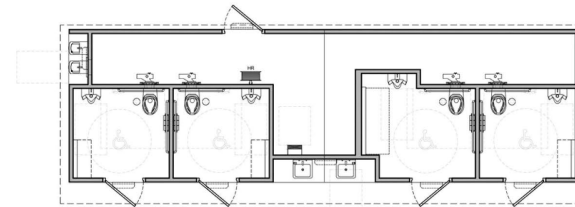
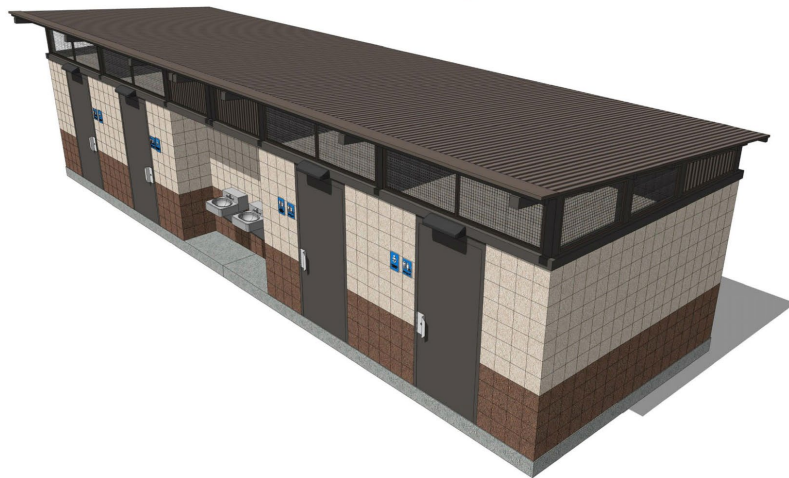


Park Monument Sign  
Painted Metal

Area Light Fixture  
Brand TBD



# Restroom



**FLOOR PLAN**

SCALE: NOT TO SCALE



**Restroom Location**

# Plant Palette (15' Maximum Height Under Powerlines)



*Acacia aneura* | Mulga



*Acacia craspedocarpa* |  
Leather-leaf Acacia



*Caesalpinia* 'Sierra Sun' | Cascalote  
Photo by Mountain States Wholesale Nursery



*Cordia boissieri* | Texas Olive



*Pistacia lentiscus* | Mastic Tree  
Photo by Joanbanjo, CC BY-SA 4.0, via Wikimedia Commons



*Vitex negundo* 'Heterophylla' |  
Cut-leaf Chaste Tree

Photo by Cillas, CC BY-SA 4.0, via Wikimedia Commons



*Ambrosia deltoidea* | Bursage



*Encelia farinosa* | Brittle Bush



*Muhlenbergia rigida* 'Nashville' |  
Nashville Mulley Grass  
Photo by Mountain States Wholesale Nursery



*Baileya multiradiata* | Desert  
Marigold



*Eremophila prostrata* 'Outback  
Sunrise' | Outback Sunrise Emu Bush



*Penstemon parryi* | Parry's Penstemon  
Photo by Southwest Desert Flora



*Gadularia gooddingii* | Gooding  
Verbena

# Public Art

Public Art is a component of this project with a \$36,000 Budget

We have asked the artists to make proposals focused on public art possibilities on the shade structure panels, a pedestrian bridge railing, seating or sidewalk enhancements. Due to the budget, art most likely will only be one of the four options.

We currently have four artist finalists that are working on their initial concepts for the dog park. They will present their previous work, their concept and interview with an artist selection panel in early May.

The artist selection will be presented to the SPA Advisory Board for final approval in mid-May.

Once the artist is approved and under contract, the concept will be incorporated into the park design. The SPA advisory board will also need to approve the concept and final design.



# Where are we in the process?

