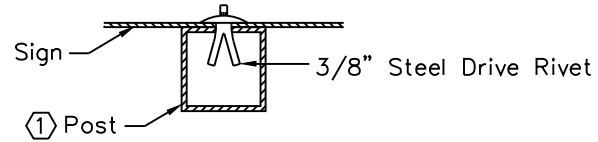
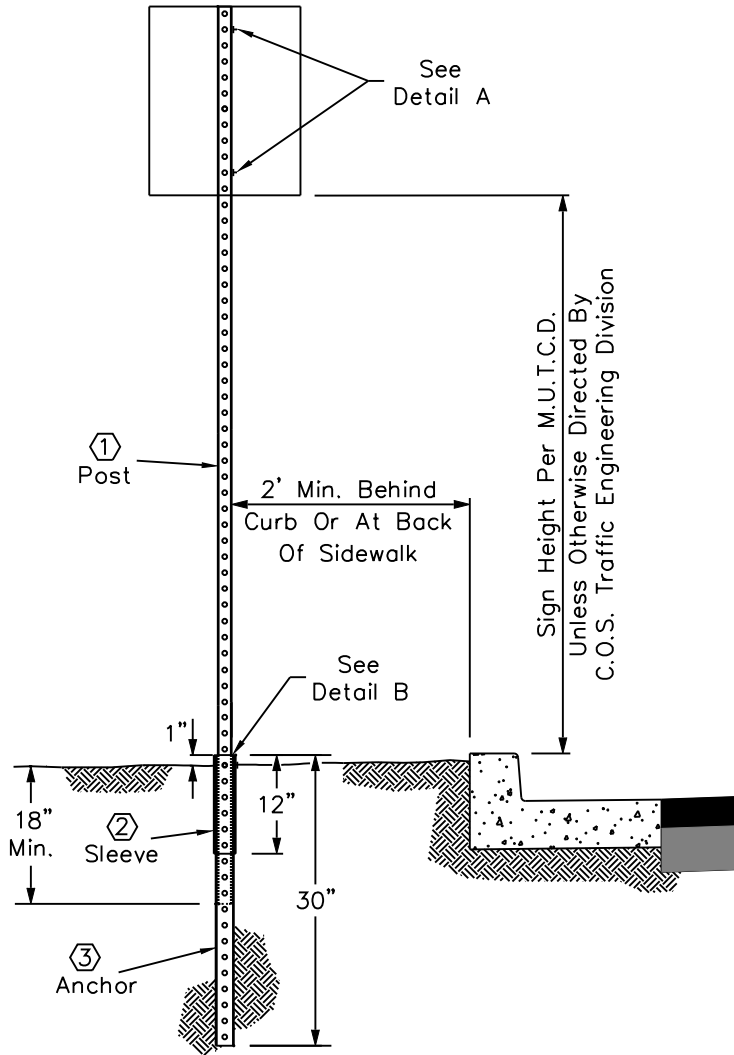
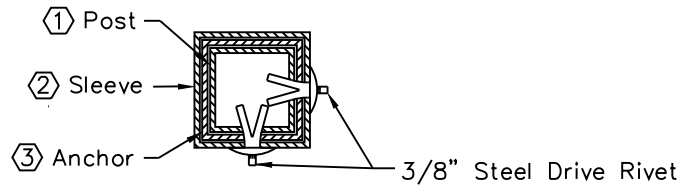


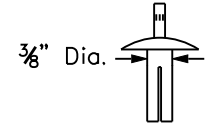
REVISED 3/19/09



**Detail A  
Sign Mounting**



**Detail B  
Anchor Assembly**



**3/8" Steel Drive Rivet**

Note: Aluminum rivets are not acceptable.

**Legend**

- ① Post - 1-3/4" x 1-3/4" Square Perforated 0.105" Galvanized Steel Tubing (Green Finish)
- ② Sleeve - 2-1/4" x 2-1/4" x 12", Square Perforated 0.105 Galvanized Steel Tubing
- ③ Anchor - 2" x 2" x 30", Square Perforated 0.105" Galvanized Steel Tubing

**NOTE:**

- 1. Sign Post, Sleeve And Anchor Shall Be As Per COS Specification Section 402.3

DETAIL NO.  
**2131**

**City of Scottsdale  
Standard Details**

APPROVED BY:  
**Scottsdale Standards &  
Specifications Committee**

**SIGN POST INSTALLATION**

DETAIL NO.  
**2131**