

Historic resources (properties, structures, and districts) are listed chronologically by when they were placed on the Scottsdale Historic Register. [Links](#) to Historic Significance Assessments and Design Guidelines are provided. This official Scottsdale Historic Register was last reviewed and updated August 2023.



### **Scottsdale Grammar School No. 1 (Little Red School House)**

7333 East Scottsdale Mall

**Construction: 1909**

Placed on Register: May 23, 2000 by Resolution No. 5550

National Register Listing: June 1994

[Historic Significance Assessment](#) | [Design Guidelines](#) | [Map](#)



### **Cavalliere's Blacksmith Shop**

3805 North Brown Avenue

**Construction: 1920**

Placed on Register: May 23, 2000 by Resolution No. 5550

[Historic Significance Assessment](#) | [Design Guidelines](#) | [Map](#)



### **Farmer's State Bank of Scottsdale (Rusty Spur)**

7245 East Main Street

**Construction: 1921**

Placed on Register: May 23, 2000 by Resolution No. 5550

[Historic Significance Assessment](#) | [Design Guidelines](#) | [Map](#)



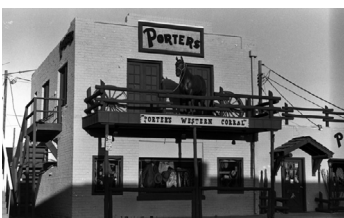
### **Johnny Rose's Pool Hall (Mexican Imports)**

3933 North Brown Avenue

**Construction: 1923**

Placed on Register: October 3, 2000 by Ordinance No. 3341, 22-ZN-2000

[Historic Significance Assessment](#) | [Design Guidelines](#) | [Map](#)



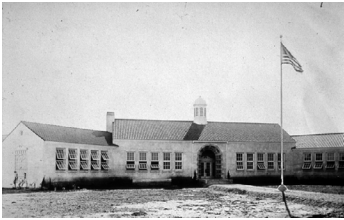
### **First U. S. Post Office Building (Porter's)**

3944 North Brown Avenue

**Construction: 1929**

Placed on Register: May 23, 2000 by Resolution No. 5550

[Historic Significance Assessment](#) | [Design Guidelines](#) | [Map](#)



**Scottsdale Grammar School No. 2 (Loloma School)**

3720 North Marshall Way

**Construction: 1928**

Placed on Register: May 23, 2000 by Resolution No. 5550

[Historic Significance Assessment](#) | [Design Guidelines](#) | [Map](#)



**Our Lady of Perpetual Help Mission Church**

3821 North Brown Avenue

**Construction: 1933 - Architect: Robert Evans**

Placed on Register: April 3, 2001 by Ordinance No. 3374, 1-ZN-2001

National Register Listing: September 2018

[Historic Significance Assessment](#) | [Design Guidelines](#) | [Map](#)



**Titus House**

1310 North Hayden Road

**Construction: 1892 - Architect: James Creighton**

Placed on Register: May 1, 2001 by Resolution No. 5776

National Register Listing: May 1982

[Historic Significance Assessment](#) | [Design Guidelines](#) | [Map](#)



**Saba's Department Store**

7254 East Main Street

**Construction: 1921 (Sterling Drug Store)**

Placed on Register: May 1, 2001 by Resolution No. 5776

[Historic Significance Assessment](#) | [Design Guidelines](#) | [Map](#)



**Cattle Track Complex**

6105 - 6207 North Cattle Track

**Construction: Multiple, 1930s - 1940s - Architect: George Ellis**

Placed on Register: May 1, 2001 by Resolution No. 5776

National Register Listing: September 1999

[Historic Significance Assessment](#) | [Design Guidelines](#) | [Map](#)



**Hotel Valley Ho**

6850 East Main Street

**Construction: 1956 - Architect: Edward L. Varney Assoc.**

Placed on Register: July 1, 2002 by Ordinance No. 3453, 7-ZN-2002

[Historic Significance Assessment](#) | [Design Guidelines](#) | [Map](#)



### **Adobe Apartments**

7037-7041 East 1st Avenue

**Construction: 1949, residential addition in 2002**

Placed on Register: July 1, 2002 by Ordinance No. 3455, 9-ZN-2002

[Historic Significance Assessment](#) | [Design Guidelines](#) | [Map](#)



### **Craftsman Court**

7121-7141 East 5th Avenue

**Construction: 1955 - Architect: T.S. Montgomery**

Placed on Register: July 1, 2002 by Ordinance No. 3454, 8-ZN-2002

National Register Listing: July 2022

[Historic Significance Assessment](#) | [Design Guidelines](#) | [Map](#)



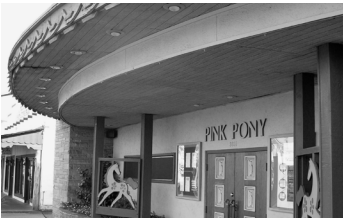
### **Sugar Bowl Restaurant**

3935 and 4005 North Scottsdale Road

**Construction: 1950 (Western Motor Service)**

Placed on Register: May 4, 2004 by Ordinance No. 3563, 20-ZN-2003

[Historic Significance Assessment](#) | [Design Guidelines](#) | [Map](#)



### **Pink Pony Restaurant**

3831 North Scottsdale Road

**Construction: 1954 (Sprouse-Reitz Drugstore)**

Placed on Register: May 4, 2004 by Ordinance No. 3562, 19-ZN-2003

[Historic Significance Assessment](#) | [Design Guidelines](#) | [Map](#)



### **Town and Country Scottsdale Historic District**

Southwest corner of Oak Street and 74th Street

Between Oak St. and Monte Vista Rd, 72nd Place and 74th Street

62 single-family homes on approximately 12 acres

**Construction: 1958 - 1960**

**Builder: Fred E. "Woody" Woodworth - Architect: Ralph Haver**

Placed on Register: June 7, 2005 by Ordinance No. 3619, 24-ZN-2004

National Register Listing: September 2009

[Historic Significance Assessment](#) | [Design Guidelines](#) | [Map](#)



### **Village Grove 1-6 Historic District**

Southwest corner of Oak Street and 68th Street  
Between Oak Street and Almeria Road, 66th Place and 69th Street  
255 single-family homes on approximately 72 acres

**Construction: 1957 - 1959 - Builder: Allied Construction Company**

Placed on Register: June 7, 2005 by Ordinance No. 3620, 25-ZN-2004

National Register Listing: May 2010

[Historic Significance Assessment](#) | [Design Guidelines](#) | [Map](#)



### **Taliesin West**

12621 North Frank Lloyd Boulevard

**Construction: 1937 - 1959 - Architect: Frank Lloyd Wright**

Placed on Register: April 4, 2006 by Ordinance No. 3667, 21-ZN-2005

National Register Listing: February 1974

National Historic Landmark: May 1982

UNESCO World Heritage Site: July 2019

[Historic Significance Assessment](#) | [Design Guidelines](#) | [Map](#)



### **Kerr Cultural Center**

6110 North Scottsdale Road

**Construction: 1948-1959, Louise Lincoln Kerr Residence**

**Placed on Register: June 17, 2008 by Resolution 7615**

National Register Listing: April 2010

[Historic Significance Assessment](#) | [Design Guidelines](#) | [Map](#)



### **Road Amundsen Pullman Car**

7301 East Indian Bend Road

**Construction: 1928, moved to city-owned park in 1974**

**Builder: George Pullman, Pullman Car Company**

Placed on Register: July 1, 2009 by Ordinance No. 3861, 3-ZN-2009

National Register Listing: September 2009

[Historic Significance Assessment](#) | [Map](#)



### **Charles Miller House**

6938 East 1st Street

**Construction: 1913, moved in 1955 and 2001 to prevent demolition**

**Designer/Builder: Likely Charles Miller**

Placed on Register: February 16, 2010 by Ordinance No. 3886, 11-ZN-2009

[Historic Significance Assessment](#) | [Map](#)



### **Villa Monterey Units 1-7 Historic District**

East & West of Miller Road, North & South of Chaparral Road  
758 homes and 13 common tracts on approximately 115 acres

**Construction: 1961-1969 - Architect: Ralph Haver and Associates  
Builder: Butler Homes**

Placed on Register: June 7, 2011 by Ordinance No. 3944, 13-ZN-2010  
[Historic Significance Assessment](#) | [Design Guidelines](#) | [Map](#)



### **Glass and Garden Community Church (The Garden Church)**

8620 East McDonald Drive

**Construction: 1966 - Architect: E. Logan Campbell**

Placed on Register: June 18, 2013 by Ordinance No. 4090, 14-ZN-2012  
[Historic Significance Assessment](#) | [Map](#)



### **Holy Cross Lutheran Church**

3110 North Hayden Road

**Construction: 1961 - 1964 - Architect: William D. Knight, Jr.**

Placed on Register: June 18, 2013 by Ordinance No. 4091, 15-ZN-2012  
[Historic Significance Assessment](#) | [Map](#)



### **First Church of Christ, Scientist (Christian Scientist Church)**

6427 East Indian School Road

**Construction: 1962 - 1971 - Architect: T. S. Montgomery**

Placed on Register: June 18, 2013 by Ordinance No. 4089, 5-ZN-2013  
[Historic Significance Assessment](#) | [Map](#)



### **Sands North Townhouses Historic District**

7233 East Joshua Tree Lane

**Construction: 1972 - Builder: Emron Thomas (E.T.) Wright**

Placed on Register: October 1, 2019 by Ordinance No. 4426, 9-ZN-2019  
National Register Listing: September 2022

[Historic Significance Assessment + Design Guidelines](#) | [Map](#)



### **Kimsey Building**

7120 E Indian School Road

**Construction: 1963 - Architect: Ralph Haver**

Placed on Register: April 6, 2021 by Ordinance No. 4491, 10-ZN-2020  
[Historic Significance Assessment + Design Guidelines](#) | [Map](#)



## **City Hall**

3939 North Drinkwater Boulevard

Construction: 1968 - Architect: Bennie M. Gonzales

Placed on Register: June 13, 2023 by Ordinance No. 4597, 3-ZN-2023

[Historic Significance Assessment + Design Guidelines](#) | [Map](#)