

Scottsdale Police Department

Annual Statistics



National & State Crime Statistics

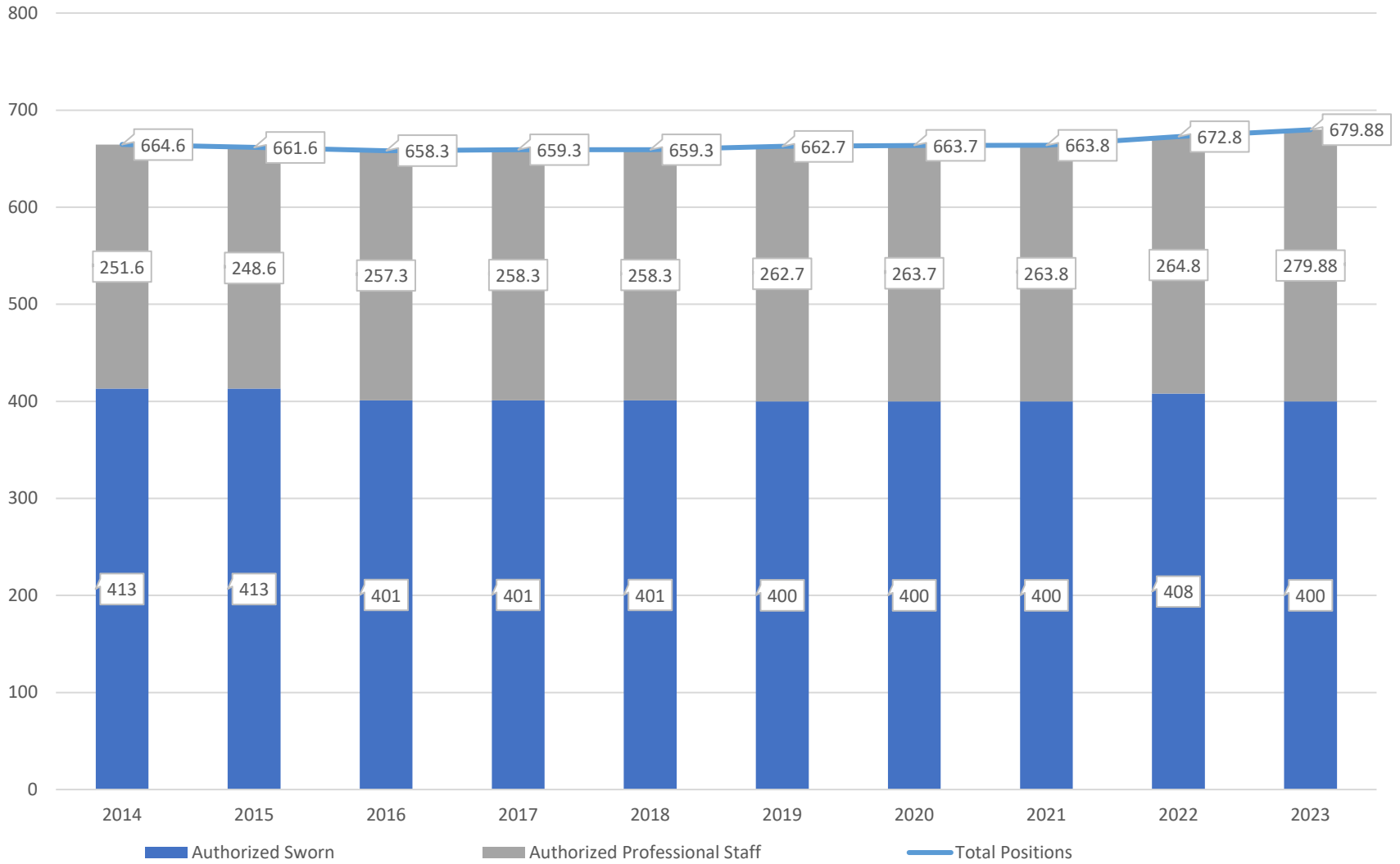
Beginning in January 2021, the Scottsdale Police Department began reporting crime statistics in the Uniformed Crime Reporting (UCR) *National Incident Based Report System* (NIBRS). Previously, the department reported under the Summary Reporting System (SRS). NIBRS is intended to provide more context to reported crime, in the following ways:

- Incident specific data for 52 offenses (previously 10 in SRS)
- Reported arrests for an additional ten offenses (previously 20 in SRS)
- 58 data elements related to the criminal elements, and characteristics of victims and offenders (not previously reported), including
 - the relationship between victim/offender
 - Type of injury or loss
 - Location details
 - Weapons involved

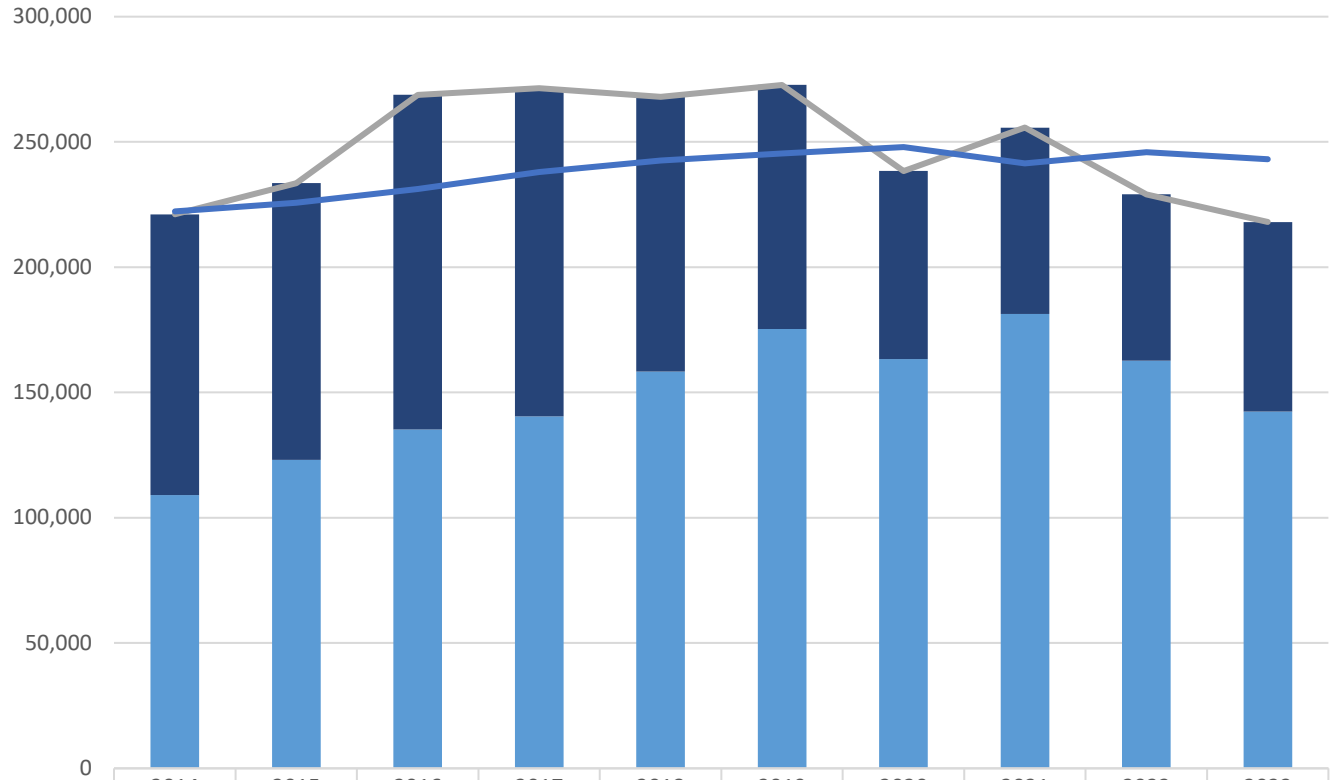
National & State Crime Statistics

- With this change, published crime data is fluid and can change from month to month, as the department reports new information to the Arizona Department of Public Safety (DPS) and the Federal Bureau of Investigations (FBI)
 - Under summary reporting, crimes were reported and published as of when the crime was *reported* to the police department. Under NIBRS, the crime is reported and published as of when the crime *occurred*.
 - This means that as information is reported to the Scottsdale Police Department, any delayed reports will be submitted at the time received, but could be reported for the month that the crime occurred. This influences monthly data on an ongoing basis.
- All official crime data can be found on the DPS [Crime Statistics Dashboard](#)
 - Data is collected from participating agencies on a monthly basis and all charts reflect data processed prior to the current day. The current year does not reflect a full 12 months of data and should not be compared to previous years.

Authorized Employees (PCN)

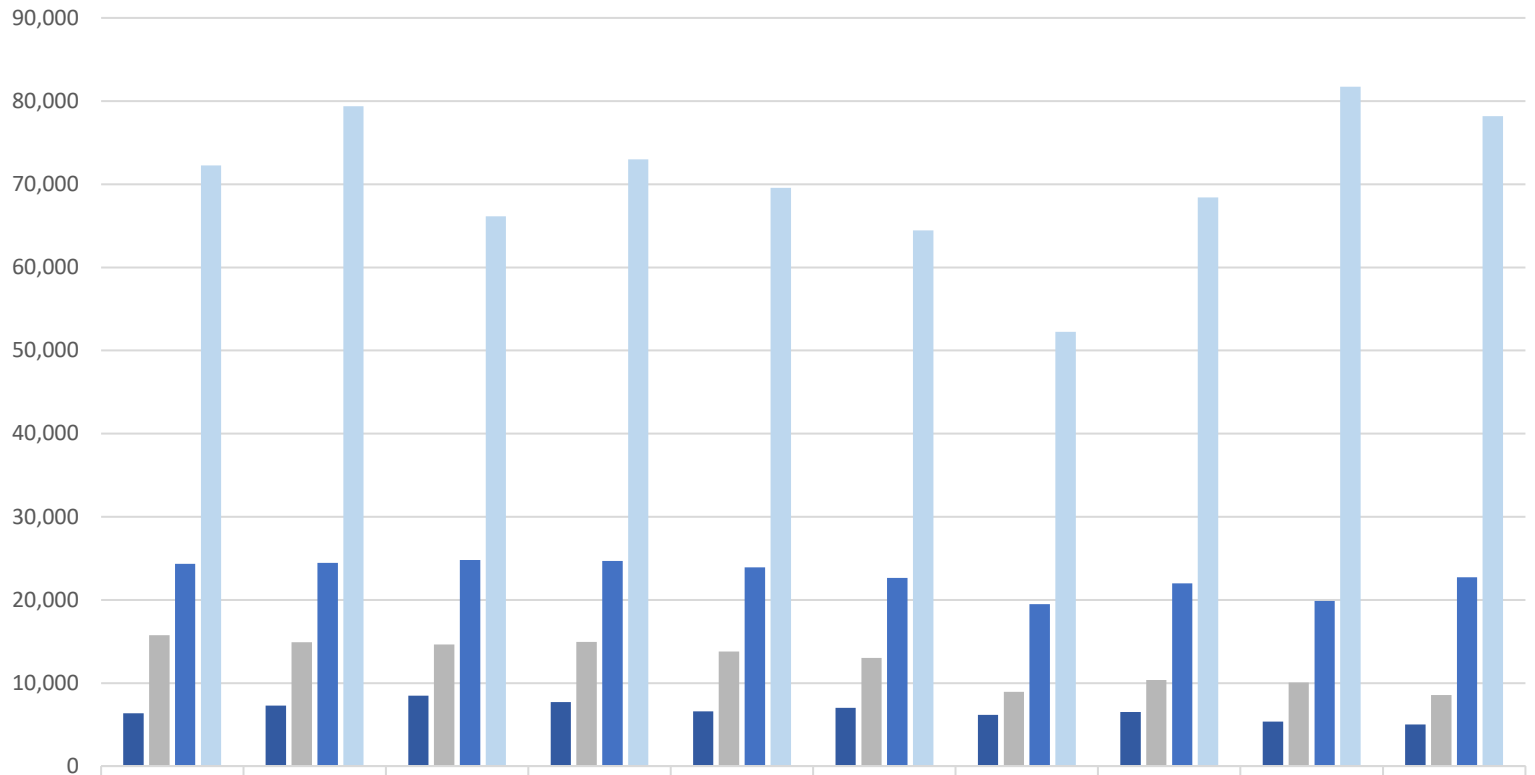


Calls for Service



	2014	2015	2016	2017	2018	2019	2020	2021	2022	2023
■ Calls for Service (Officer Initiated)	112,049	110,454	133,550	130,955	109,615	97,317	75,023	74,338	66,325	75,559
■ Calls for Service (Citizen Generated)	109,020	123,077	135,217	140,483	158,308	175,379	163,326	181,353	162,735	142,434
— Calls for Service (All)	221,069	233,531	268,767	271,438	267,923	272,696	238,349	255,691	229,060	217,993
— Population	222,217	225,698	231,200	238,000	242,540	245,417	247,944	241,361	245,886	243,050

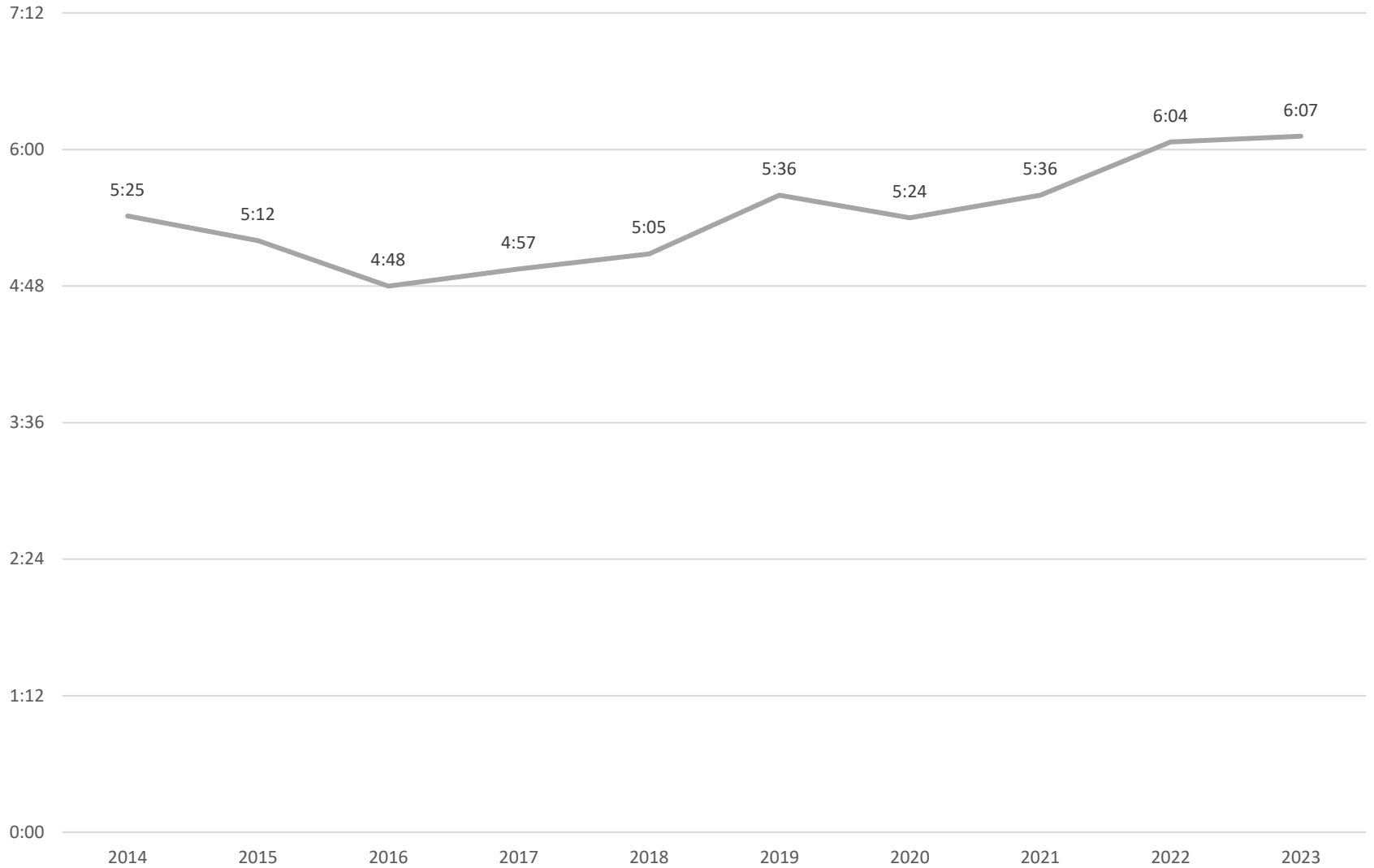
Reports, Arrests, Contacts, and Citations



	2014	2015	2016	2017	2018	2019	2020	2021	2022	2023
Field Contact Cards	6,361	7,287	8,474	7,693	6,589	7,035	6,189	6,524	5,357	5,022
Arrests	15,766	14,902	14,641	14,957	13,804	13,021	8,938	10,354	10,054	8,556
Dep. Reports (DRs)	24,345	24,456	24,786	24,699	23,924	22,655	19,486	21,990	19,881	22,720
Citations	72,258	79,382	66,130	73,004	69,586	64,452	52,231	68,425	81,719	78,179

■ Field Contact Cards
 ■ Arrests
 ■ Dep. Reports (DRs)
 ■ Citations

Average Emergency Response Time (in minutes:seconds)



Disclaimers

- All information provided is in Calendar Year
- Population figures are obtained via <https://population.az.gov/>
- All positions are authorized positions from the fiscal year budget that begins mid-calendar year of each specific year (example: 2016 is FY16/17 Adopted Budget)
- All Statistics are from the Scottsdale Police Department Systems as of April 23, 2024.
 - Photo Enforcement Citations provided by ATS include red light, left turn, speeding, and school zone violations.
- Emergency Response Times are calculated from “start” to “arrive,” or “hello” to “hello” and only include Priority 1 citizen-generated calls for service

